



archaeographies

EXCAVATING NEOLITHIC DISPILIO

FOTIS IFANTIDIS

Published by

Archaeopress Publishing Ltd
Summertown Pavilion
18-24 Middle Way
Oxford OX2 7LG
United Kingdom

www.archaeopress.com

Archaeographies: Excavating Neolithic Dispilio

© F. Ifantidis, Archaeopress 2013

ISBN 978-1-9057-3962-2

ISBN 978-1-80327-790-5 (e-Pdf)



This work is licensed under the Creative Commons Attribution-NonCommercial-NoDerivatives 4.0 International License. To view a copy of this license, visit <http://creativecommons.org/licenses/by-nc-nd/4.0/> or send a letter to Creative Commons, PO Box 1866, Mountain View, CA 94042, USA.

This book is available direct from Archaeopress or from our website www.archaeopress.com

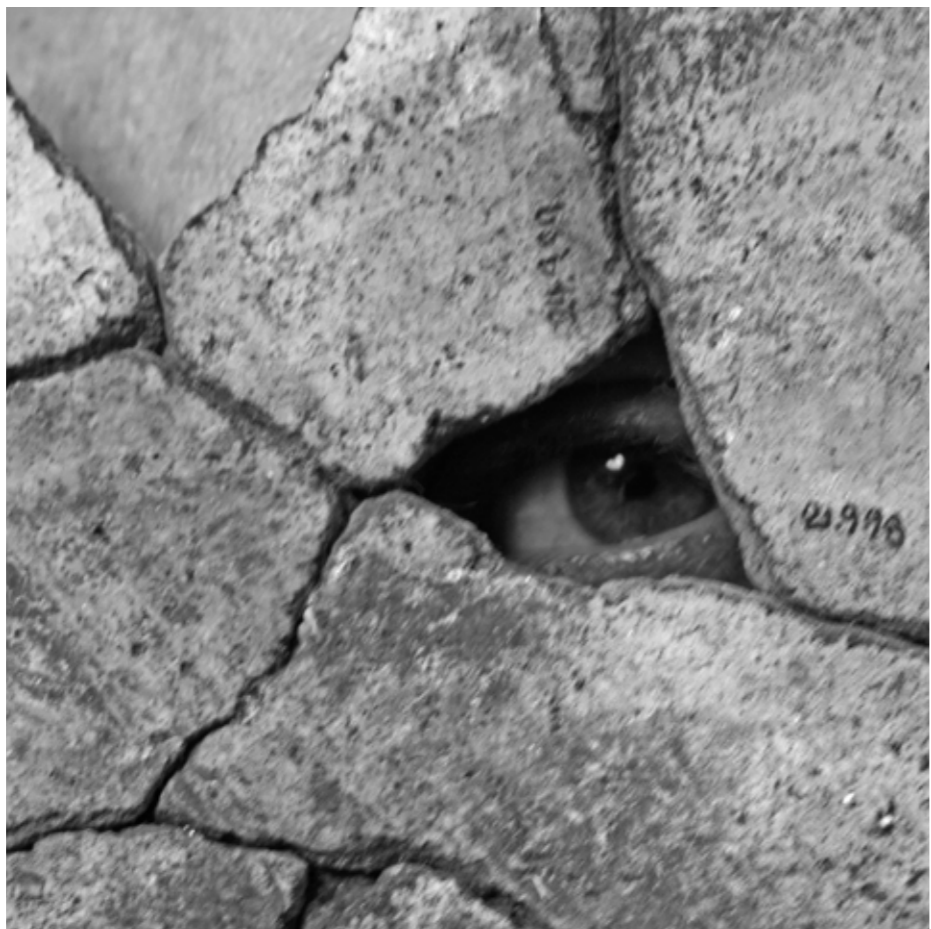
AN EXCAVATION DOES NOT SIMPLY REVEAL;
IT PRODUCES AND REPRODUCES: MINISCULE
BEADS, WOODEN POSTS AND THEIR NEGATIVE
IMPRESSIONS, FRAGMENTS OF VESSELS,
REMNANTS OF SHEEP, CHARRED EINKORN
GRAINS, ASSUMPTIONS AND THEORETICAL
MODELS, SOILED PAGES OF DAYBOOKS,
"CLEAN" SPREADSHEETS, STORIES -BIG
OR SMALL, PAST OR PRESENT-, BONDS OF
PEOPLE AND FRIENDSHIPS, AND THOUSANDS
OF PHOTOGRAPHS. THE PHOTOGRAPHS OF THIS
BOOK ARE RELATED TO THE EXCAVATION OF THE
LAKESIDE NEOLITHIC SETTLEMENT OF DISPILIO
IN NW GREECE COMMENCED IN 1992 BY THE
ARISTOTLE UNIVERSITY OF THESSALONIKI
AND FORM PART OF A PROJECT COMMENCED
IN 2006 [VISUALIZINGNEOLITHIC.COM].

ACKNOWLEDGEMENTS | THE ARCHAEOPRESS
TEAM, ANTIGONE ADAMIDOU, ATHENA
ALMATZI, KLEA DARAVINGA, IRENE
DELIDAKI, ANASTASIA DIMOULA, SOFIA
DOULKERIDOU, YANNIS HAMILAKIS, ANASTASIA
HOURMOUZIADI, HARA LIATIFI, DIMITRIS
NIKAKIS, MARIANNA NIKOLAÏDOU, NIKOS
PANTAZOPOULOS, VANESSA PAPAGEORGIU,
TASSOS SIANOS, MARINA SOFRONIDOU, YANNIS
STAVRIDOPOULOS, KOSMAS TOULOUMIS,
EVANGELIA VOULGARI, TRYFON YAGOULIS,
AND THE NUMEROUS STUDENTS, WORKERS,
AND VISITORS OF THE DISPILIO EXCAVATIONS.

FOR G. H. HOURMOUZIADIS













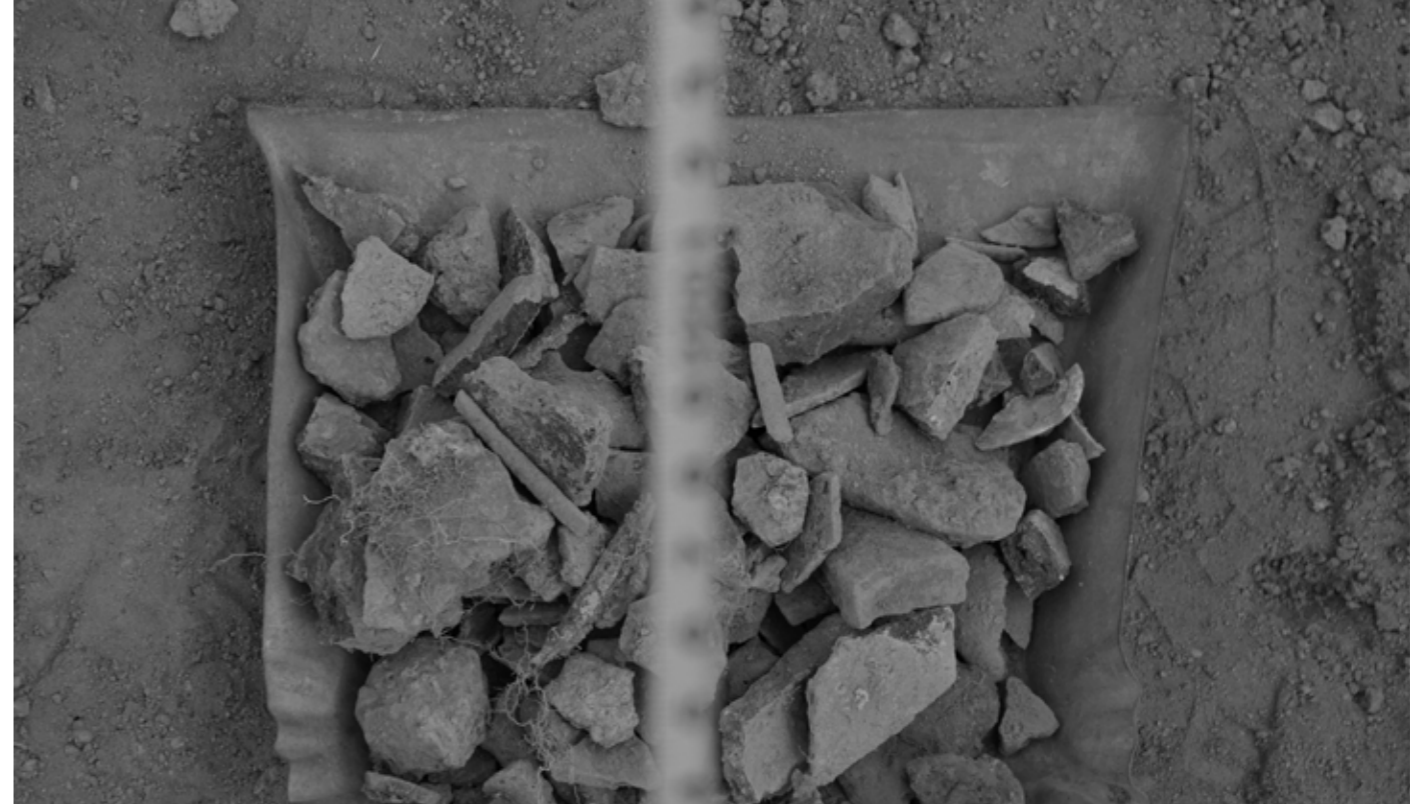
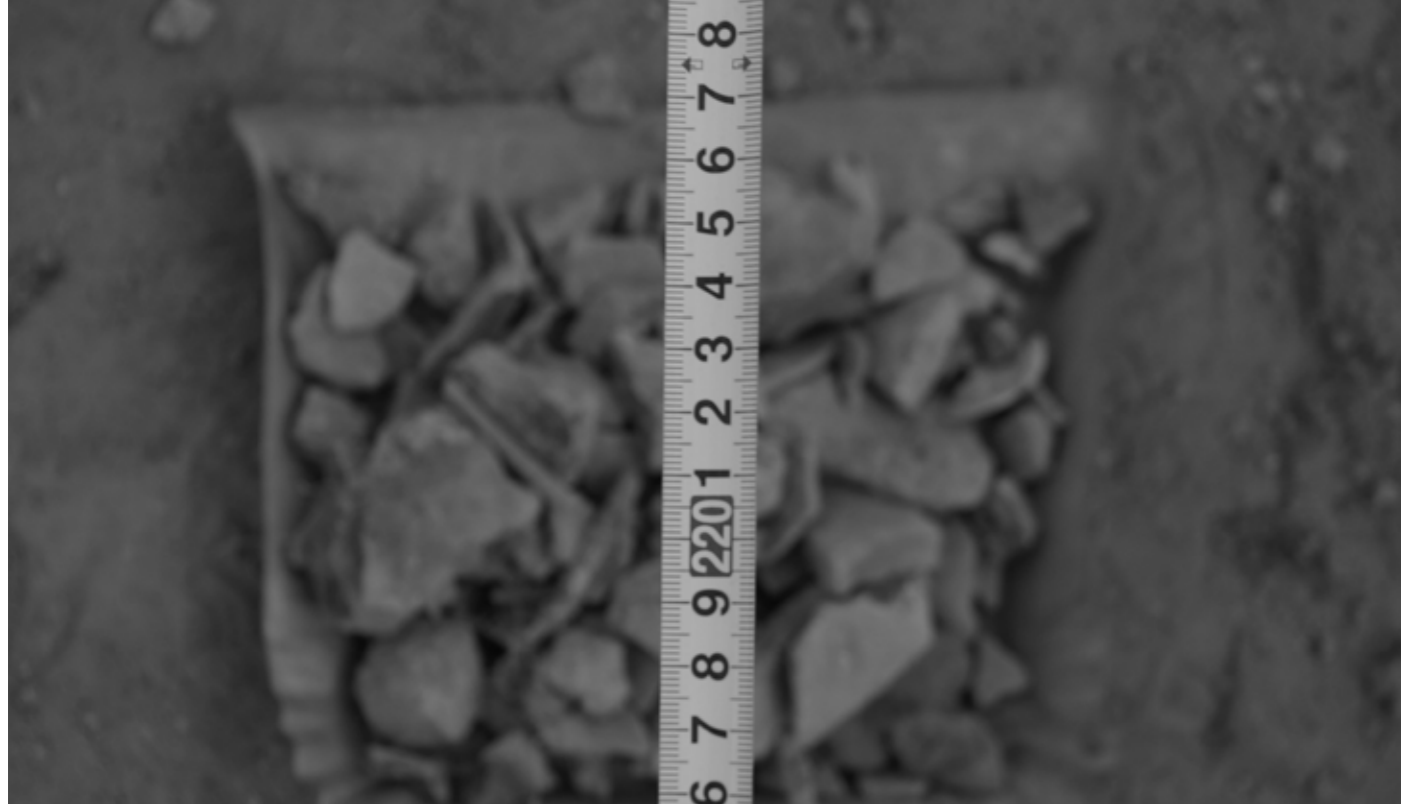














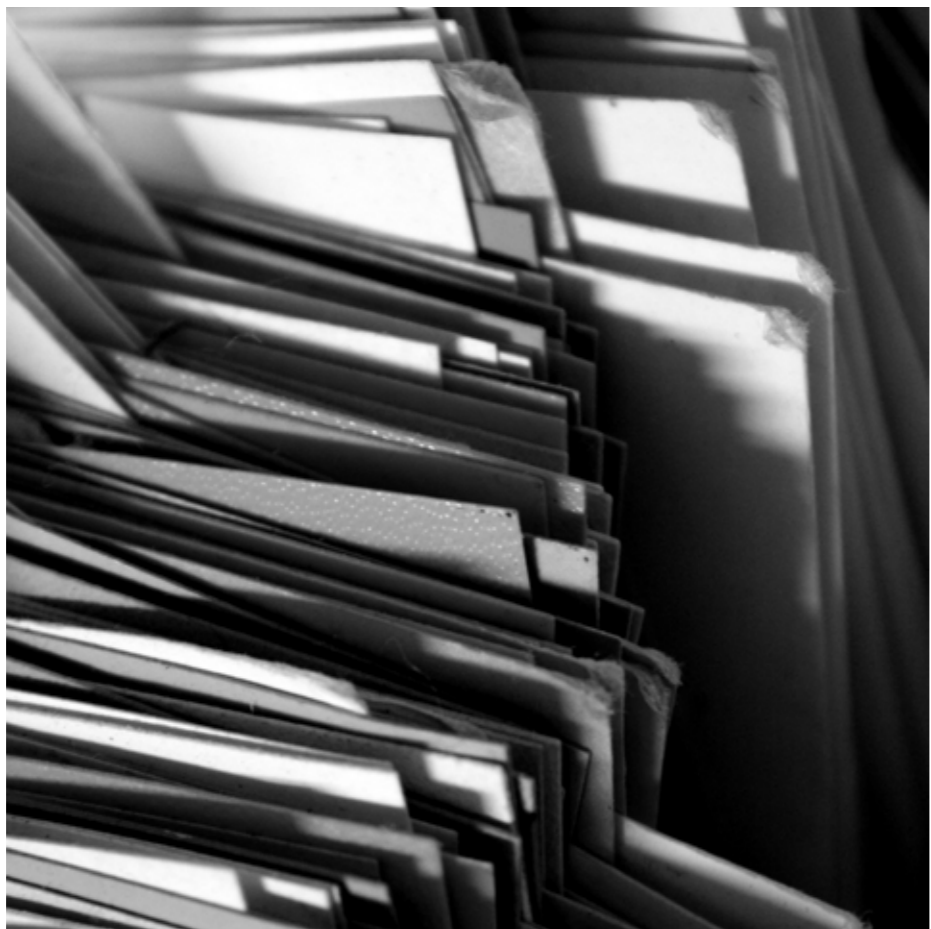


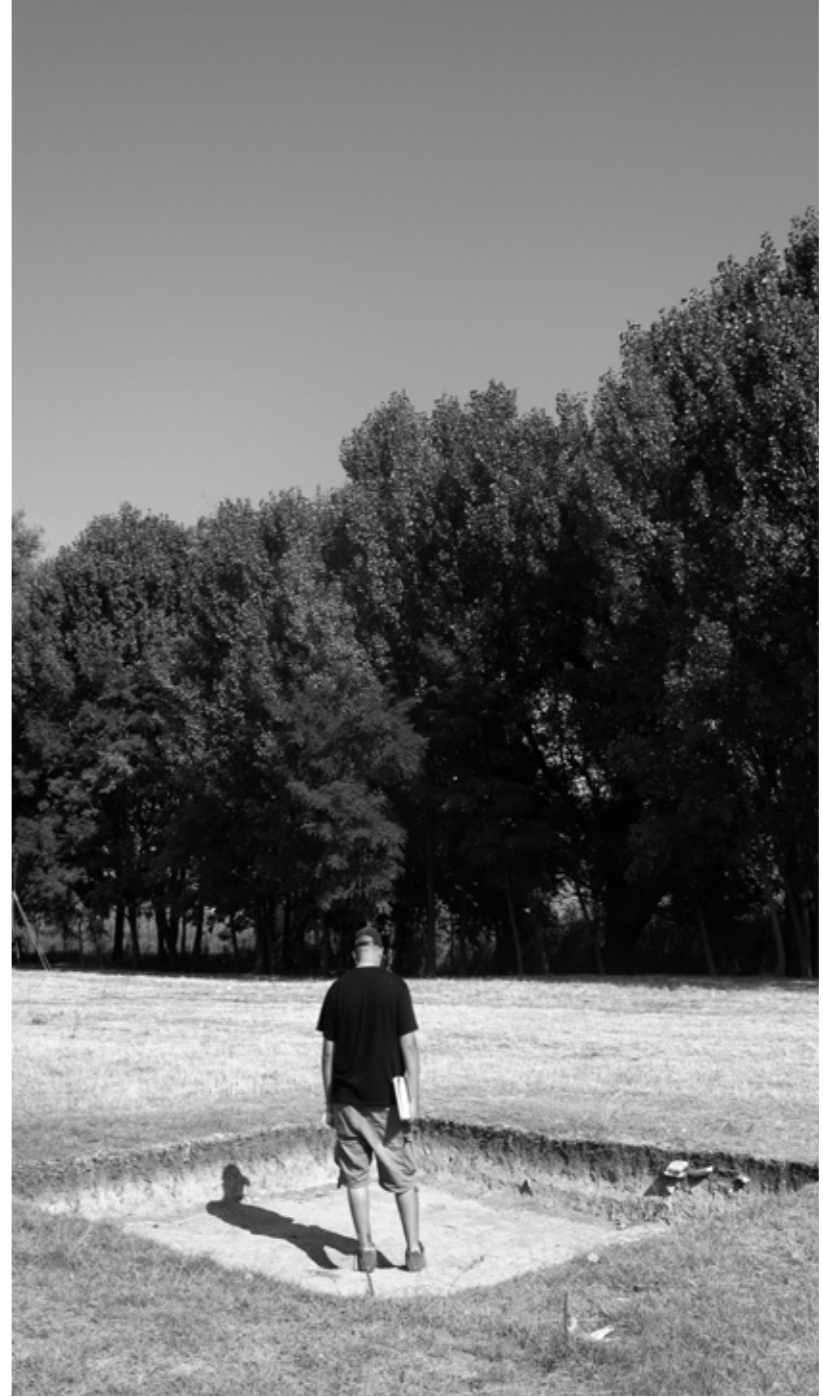


Handwritten notes on lined paper, likely a field log or data sheet. The entries are organized in rows, each containing a numerical value, a label, and a final numerical value. The labels include 'AB', 'KB', and 'xΔ'. The numbers are written in a cursive style.

Value	Label	Value
1.85	AB	1.85
1.86	AB	1.86
1.77	AB	1.77
1.99	AB	1.99
1.78	AB	1.78
1.79	AB	1.79
1.70	KB	1.70





















ΣΗΜΑΣΙΑ
ΔΕΝ ΕΧΕΙ
ΑΥΤΟ ΠΟΥ
ΒΡΙΣΚΕΙΣ
ΣΗΜΑΣΙΑ
ΕΧΕΙ ΠΩΣ,
ΓΙΑΤΙ ΚΑΙ
ΓΙΑ ΠΟΙΟΝ
Ο ΒΡΙΣΚΕΙΣ

grecian
Historic Tour Operator
17 Kifissou St.
105 57 Athens, Greece
Tel: +30 210 57 17 000
Fax: +30 210 57 48 880
www.grecian.gr
email: grecian@grecian.gr

Κορμολιό
"ΡΕΝΑ" * 85.594
ΕΥΧΕΤΕΣ-ΑΝΑΘΩΝ
Βασιλείου Κατερίνα

ΨΑΡΟΤΑΒΕΛΙΑ
Τα Μπαρμπαλιέρη
Παλαιά Κωστανόλη
ΤΣΙΚΟΥ ΠΕΝΑ
Τηλ. 24670 74481 & 74490
Τηλ. 24670 74481
Λαμία - 4074 250004

THE MORGUE PARTNER
PROPERTY READY TO BE RENTED
FOR THE BEST INVESTMENT

ΒΙΒΛΙΟΠΩΛΕΙΟ
ΓΙΑΝΝΗΣ ΚΟΥΖΑΣ
11η Νοεμβρίου 13
521 00 Κομοτηνή
Τηλ. & Fax: 2467028251



Μια μικρή διαφημίση θα είναι για τους η 2 Αυγούστου 2012. Προσέλας της για να αν τα ελάω να αν-ελάω να στο δια να αν ελάω να στην γενική να να να αν αν στην στην να αν να αν 1,2.00 να Μαρτίου 11 Κομοτηνή.

στέλιος σταύρου
Βυζαντινή Διακοσμητική

Α.Ρ.ΘΕΟΧΑΡΗΣ

ΕΠΙΣΤΡΟΦΗ
8:00, 18:30
ΚΑΤΑΡΤΙΣΤΗ ΕΡΩΤ ΚΟΙΝΩ
8:00, 18:30
ΑΝΟΙΧΤΗ
ΚΑΤΑΡΤΙΣΤΗ ΕΡΩΤ ΚΟΙΝΩ
8:00, 17:15
ΑΝΟΙΧΤΗ
8:00, 18:30









19.9.94
16.6.61





















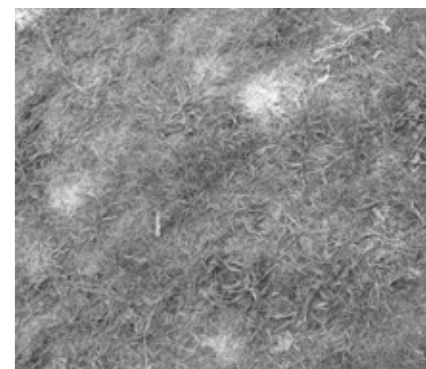














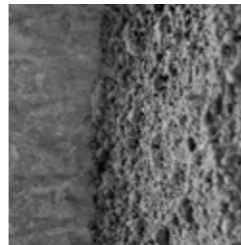
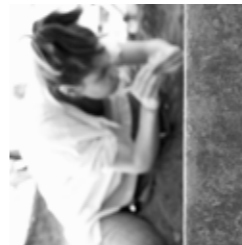




4/8/2012 | dispilio photographic archive, ca. 1997-2000



30/7/2010 | a commemorative photograph of trench Δ20γ



16/7/2010



21/7/2010 | equipment hoard



7/8/2012 | repository of analog photographic equipment



31/7/2010



21/1/2010 | an anthropomorphic vessel during its shoot



28/7/2010 | straws



23/8/2007



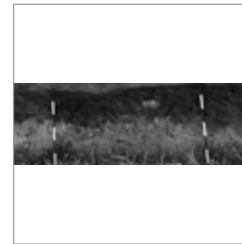
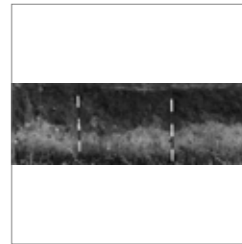
24/7/2009



20/7/2010



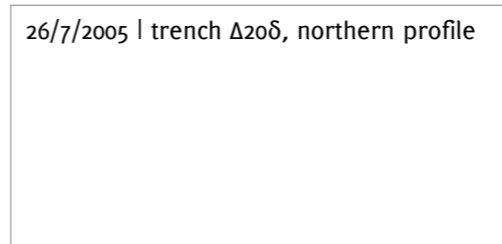
22/5/2011 | a lesson on taking depths



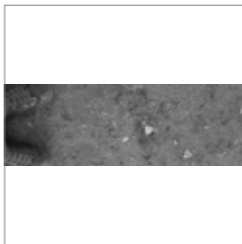
18/9/2009



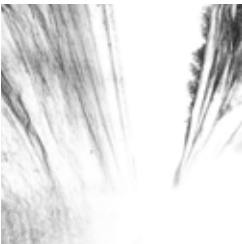
21/7/2010



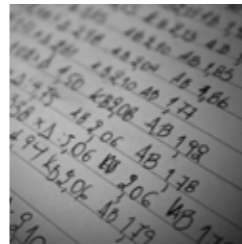
26/7/2005 | trench Δ20δ, northern profile



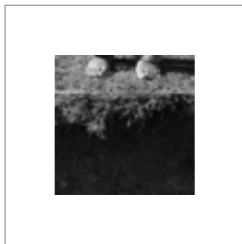
28/10/2009 | t. & i. taking final measurements



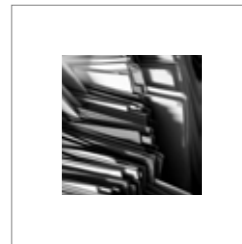
9/7/2009



4/8/2012 | a.'s notes



11/8/2004 | n. drawing



9/8/2012 | tags



16/7/2010



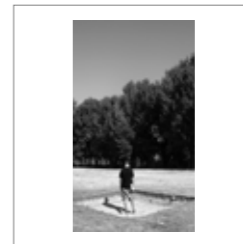
17/7/2009



31/7/2009



12/8/2008 | s. recording



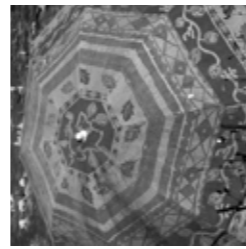
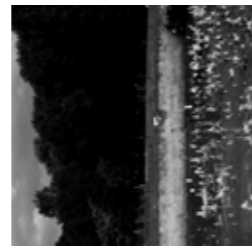
5/8/2008



9/7/2009



14/7/2010

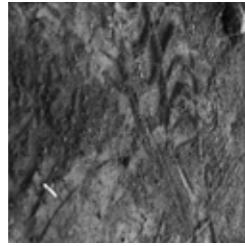


5/8/2012 | the lab's floor



10/8/2012 | pottery in restoration and a plastic bag

28/7/2010



16/7/2010



17/9/2009 | f. behind a shell bracelet fragment



30/7/2010 | m. & l. behind a vessel



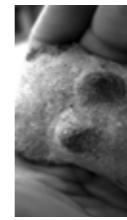
22/8/2010



28/7/2010



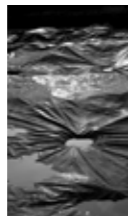
18/9/2009



9/7/2009



21/7/2010



17/9/2009



8/8/2012

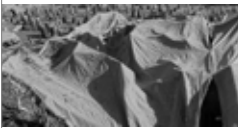
24/2/2007 | a figurine



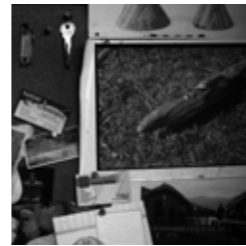
5/8/2007 | flints



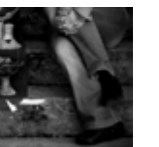
23/3/2007 | beads



24/9/2012



10/7/2009

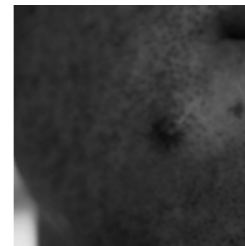


6/8/2012 | the lab's noticeboard

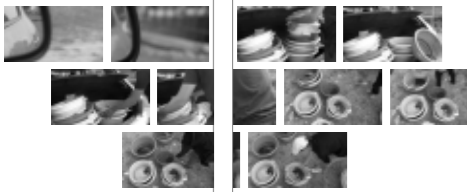


14/5/2011

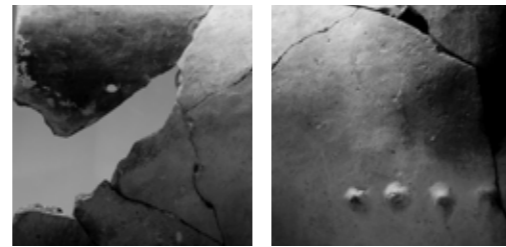
29/7/2010 | e. during a "fruit-stands" shooting



11/8/2008 | a human-tooth pendant



31/7/2009 | transferring the day's potsherds



30/7/2010 | last day of the dig



5/8/2008



23/7/2009 | v. joining the fragments of an enthroned woman

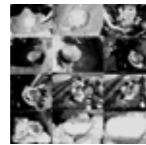
24/9/2012 | abandoned trench



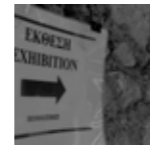
12/7/2009 | the empty dining "room"



2002-2003 | clay, stone, shell & bone finds



28/7-13/8/2003 | trench Δ25α



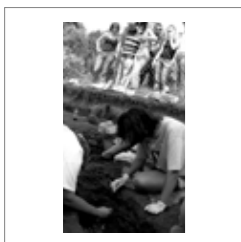
14/5/2011



13/8/2003



2/8/2007 | frequent visitors



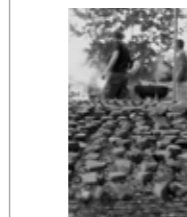
11/8/2005 | a burial is unearthed



14/5/2011



26/9/2008 | rainy day at the reconstructed village



31/7/2009 | barbeque preparations

ABOUT THE AUTHOR | FOTIS IFANTIDIS STUDIED
ARCHAEOLOGY AT THE ARISTOTLE UNIVERSITY OF
THESSALONIKI. HIS RESEARCH IS FOCUSED ON PERSONAL
ADORNMENT PRACTICES IN PREHISTORY AND ON THE
INTERPLAY BETWEEN PHOTOGRAPHY AND ARCHAEOLOGY
[CASE-STUDIES: THE NEOLITHIC SETTLEMENT OF
DISPILIO, THE ANCIENT CITY OF KALAUREIA ON THE
ISLAND OF POROS, AND THE ATHENIAN ACROPOLIS].

AMONG HIS PUBLICATIONS | POSTCARDS FROM
THE EDGE OF TIME: ARCHAEOLOGY, PHOTOGRAPHY,
ARCHAEOLOGICAL ETHNOGRAPHY (A PHOTO-
ESSAY) (PUBLIC ARCHAEOLOGY SPECIAL ISSUE:
ARCHAEOLOGICAL ETHNOGRAPHIES, 2009) [CO-
AUTHORED WITH Y. HAMILAKIS & A. ANAGNOSTOPOULOS]
_ SPONDYLUS IN PREHISTORY: NEW DATA AND
APPROACHES - CONTRIBUTIONS TO THE ARCHAEOLOGY
OF SHELL TECHNOLOGIES (ARCHAEOPRESS, 2011)
[CO-EDITED WITH M. NIKOLAÏDOU] _ THE OTHER
ACROPOLISES: MULTI-TEMPORALITY AND THE
PERSISTENCE OF THE PAST (THE OXFORD HANDBOOK
OF THE ARCHAEOLOGY OF THE CONTEMPORARY WORLD,
IN PRESS-2013) [CO-AUTHORED WITH Y. HAMILAKIS].

