

Pottery of Manqabad 2

Pottery Production and Types
from the Monastery of Manqabad
at Asyut (Egypt)

Ilaria Incordino



Access Archaeology



About Access Archaeology

Access Archaeology offers a different publishing model for specialist academic material that might traditionally prove commercially unviable, perhaps due to its sheer extent or volume of colour content, or simply due to its relatively niche field of interest. This could apply, for example, to a PhD dissertation or a catalogue of archaeological data.

All *Access Archaeology* publications are available as a free-to-download pdf eBook and in print format. The free pdf download model supports dissemination in areas of the world where budgets are more severely limited, and also allows individual academics from all over the world the opportunity to access the material privately, rather than relying solely on their university or public library. Print copies, nevertheless, remain available to individuals and institutions who need or prefer them.

The material is refereed and/or peer reviewed. Copy-editing takes place prior to submission of the work for publication and is the responsibility of the author. Academics who are able to supply print-ready material are not charged any fee to publish (including making the material available as a free-to-download pdf). In some instances the material is type-set in-house and in these cases a small charge is passed on for layout work.

Our principal effort goes into promoting the material, both the free-to-download pdf and print edition, where *Access Archaeology* books get the same level of attention as all of our publications which are marketed through e-alerts, print catalogues, displays at academic conferences, and are supported by professional distribution worldwide.

The free pdf download allows for greater dissemination of academic work than traditional print models could ever hope to support. It is common for a free-to-download pdf to be downloaded hundreds or sometimes thousands of times when it first appears on our website. Print sales of such specialist material would take years to match this figure, if indeed they ever would.

This model may well evolve over time, but its ambition will always remain to publish archaeological material that would prove commercially unviable in traditional publishing models, without passing the expense on to the academic (author or reader).



Pottery of Manqabad 2

Pottery Production and types
from the Monastery of Manqabad
at Asyut (Egypt)

Ilaria Incordino

Access Archaeology





ARCHAEOPRESS PUBLISHING LTD
Summertown Pavilion
18-24 Middle Way
Summertown
Oxford OX2 7LG
www.archaeopress.com

ISBN 978-1-80327-467-6
ISBN 978-1-80327-468-3 (e-Pdf)

© Ilaria Incordino and Archaeopress 2023

All rights reserved. No part of this book may be reproduced, stored in retrieval system, or transmitted, in any form or by any means, electronic, mechanical, photocopying or otherwise, without the prior written permission of the copyright owners.

This book is available direct from Archaeopress or from our website www.archaeopress.com

Contents

Introduction	1
Chapter I. A selected catalogue of pottery from El-Ashmunein SCA store and Manqabad site.....	5
Introduction to the catalogue.....	5
1.1 The pottery from the el-Ashmunein SCA store.....	6
1.2 The pottery from the Site of Manqabad.....	6
The Catalogue	8
Chapter II. Observations and comments on the typologies	86
2.1 Analysis of the pottery typologies: coarse wares	86
2.2 Fine wares	91
2.3 Amphorae and lamps	98
Chapter III. The survey of the production area	103
3.1 The investigation of the Southern Sector.....	103
3.2 The furnace of Manqabad.....	106
3.3 Kilns for pottery production in Byzantine Egypt	110
3.4 Some remarks about the pottery production at the Manqabad monastery	115
Conclusions	121
Bibliography.....	125
Plates	134

Introduction

The present volume has the principal aim to present, document and analyse a new selection of ceramics deriving from the Egyptian site of Manqabad (Asyut). The Italian Egyptian project at this monastic complex started in 2011, sponsored by the University of Naples “L’Orientale” (UNIOR) and the Italian Ministry of Foreign Affairs and Development Cooperation (MAECI) and is directed by Rosanna Pirelli, professor of Egyptology and Archaeology and Art History of Ancient Egypt at UNIOR.

The site is located about 9 km north of Asyut and was accidentally discovered in 1965, during construction work for the local electrical system. Between 1976 and 2010 it was excavated only by Egyptian inspectors of the Antiquities Service (SCA). The main phases of occupations can be identified as follows: a First Christian Period (Phase I, 6th century AD), a Second Christian Period (Phase II, 8th century AD) corresponding to the beginning of the Islamic Period; an Islamic Period, 19th century CE, reign of Mahmud II). In addition to that, three more periods of possible, or less regular human presence can be suggested as follows: a Pharaonic Period (deduced from the finding of hieroglyphic signs on at least two limestone blocks reused in Christian era analysed during the 2014 and 2018 missions); a Ptolemaic Period (?); and a Late Roman Period (for the presence of thermal-bath-like architectural structures in the central area of the site). Moreover, some literary (papyrus) sources quote the occurrence of a *castrum* at Likopolis still in use during the first half of the 5th century AD. This date can be seen as a *terminus post quem* for the beginning of the monastic settlement at Manqabad.

During the UNIOR field missions conducted so far, the team has been able to re-discover and outline the history of this huge monastic site (92.000 m²) in the Middle Egypt region, which is formed by three main areas: the Northern Sector, a 230m. long double row of monastic housing units and a chapel located at the northern end of the site, today limited by the modern Muslim cemetery; the Central Sector, including more housing units, a possible thermal bath complex of the Late Roman Period and a ‘Qasr’; the Southern sector with the possible remains of another church, a monumental gate on the west and a quite high ‘dump’, which could represent the production area of the site. One of the principal goals of the project is the study and publication of the related findings, today stored at the SCA warehouses in el-Ashmunein and Shutby, together with the analysis of the material deriving from the ongoing excavations. Of course, pottery has a prominent role in the identification of the different phases of occupation and production/domestic activities performed in the ancient monastic community. Therefore this volume aims at presenting the most significant ceramic typologies identified from

Manqabad, while collecting as much references and parallels as possible deriving from several different monastic sites in Egypt. Notwithstanding the still ongoing process of study of this assemblage (many archaeometric and possibly content analysis have been planned and hopefully will be performed in the forthcoming seasons), the wish of the author is to share with the scientific community those typologies identified, in order to contribute to the debate about the documentation, study, publication and classification of ceramic material from Byzantine Egypt.

Methodological issues

The study conducted on the Manqabad ceramics has been affected, since the first attempts, by several difficulties, of which the effort to find reliable parallels in the available literature is one of the most important. In fact, if we do not consider the most recent volumes and papers dedicated to assemblages of Byzantine pottery from Egypt, many publications, mostly regarding ancient excavation material, still present an incomplete set of data, which cannot be properly used as comparative repertoires. Unfortunately, it was not possible to get technical or general information about vessels (nor even a picture or drawing) deriving, for example, from Thebes (St.Epiphanius), Saqqara (Apa Jeremia) and many other similar sites. More in general, ceramics is one of the most complex and ubiquitous archaeological material used mainly to measure time, but it is also a social media that makes it possible to transmit different messages through symbols loaded with social, cultural and functional meaning¹. In this respect, Egyptian archaeological ceramics analysis is still in its infancy, but it is essential in order to obtain a better understanding of the behaviour of the people who produced, distributed and used these ceramics. Despite the enormous progress made in the last 30 years in the field of Pharaonic ceramic study, the Late Antique material has not received the same attention from scholars until quite recently. With few exceptions, the oldest excavation reports of monastic sites across Egypt bear no useful sets of data related to pottery items, while the most recent publications have successfully changed this attitude and laid the bases for a complete documentation system of the single site assemblages. The issue of classifying the Egyptian pottery produced in the Byzantine Period has interested scholars since the 1970s², starting from some terminological issues and chronological labels

¹ Schiffer M.B. 2010. Behavioral Archaeology. Principles and Practice. Routledge; Schiffer M.B, Skibo J.M. 2008. People and Things. A behavioral approach to Material Culture, Springer.

² Egloff, M. 1977. Kellia, La Poterie Copte. Quatre Siècles d'artisanat et d'échanges en Basse Egypte, Recherches Suisse d'Archéologie copte III, Genève; Hayes J.W. 1972. Late Roman Pottery. The British School at Rome. London; Rodziewicz M. 1976. Alexandrie I. La ceramique Romaine tardive d'Alexandrie. Editions Scientifiques de Pologne, Varsovie.

(Roman, Byzantine, Coptic) and continuing with the selection of dating criteria (size, function, typology of clay, capacity, contents, evidence of use, textual evidence, radiocarbon analysis and possible occurrence of coins) and comparative analysis with the Nubian types³. In particular, the work of Pascale Ballet in the 90s and 2000s for the Institut Français d'Archéologie Orientale (IFAO) is definitely of fundamental importance⁴ since for the first time it involved a systematic pottery survey of several Egyptian sites, the use of different sources of information about the pottery production combined with fabric analysis, and the definition of the distinctive features of an atelier, to be identified in the field. The last twenty years have seen a growth in published catalogues of Byzantine pottery from different Egyptian sites, including some attempts at web-based portals and dedicated conferences⁵. Nowadays Egyptian ceramics in general are at the center of a lively debate, since recent years have seen a shift of attention towards production, materials and function studies⁶, but the Byzantine ceramics still lack a comprehensive treatment. In fact, we still have to deal with the lack of a unique and complete system of classification of the Byzantine pottery in Egypt. Certainly, many fundamental volumes are available to be used as parallel repertoires, edited most of all during the last three decades, which form the essential bulk of the relevant literature⁷. But it is still very common to find a single and self-referential system of classification for each site and its related pottery assemblage. Considering those general methodological issues, this catalogue does not include a new system of pottery classification, but simply refers to previous schemes, when possible, in order to identify the typologies.

³ Adams W.Y. 1986. *Ceramic Industries of Medieval Nubia*, 2 vols. Princeton.

⁴ Ballet P., Picon M. 1987. 'Recherches Préliminaires sur les origines de la céramique des Kellia (Égypte). Importations et productions égyptiennes', in: CCE 1, pp.17-48; Ballet P. et alii. 1991. 'Artisanat de la céramique dans l'Égypte Romaine tardive et Byzantine. Prospections d'ateliers de potiers de Minia à Assouan', in: CCE 2, pp. 129-144; Ballet, P., Bosson, N. and Rassart-Debergh, M. 2003. *Kellia: 2, L'Ermitage copte QR 195. Céramique, inscriptions, décor*, FIFAO 49. Le Caire; Ballet, P., and Poludnikiewicz, A. 2012. *Tebtynis V. La céramique des époques hellénistique et impériale. Campagnes 1988-1993. Production, consommation et réception dans le Fayoum méridional*, FIFAO 68. Le Caire; Ballet, P., Guidotti M.C. 2014. 'Identificazione e analisi delle discariche domestiche e industriali della città di Antinoe', in: Pintaudi R. (ed.) *Antinoopolis II*, Firenze, pp. 165 – 221.

⁵ See for example: 'Roman Amphorae: a digital resource' of the University of Southampton (2005, updated 2014, https://archaeologydataservice.ac.uk/archives/view/amphora_ahrb_2005/cat_amph.cfm).

⁶ See: Peña T. 2007. *Roman Pottery in the Archaeological Record*, Cambridge University Press; Bader B. and Ownby M.F. (eds.). 2013. *Functional Aspects of Egyptian Ceramics in their Archaeological Context*, 2009, Leuven, Paris, Walpole; Bader B. (2017) *Ancient Egyptian Pottery*. Oxford Handbooks Online; Warden L.A. 2021. *Ceramic Perspectives on ancient Egyptian Society*. Cambridge Elements, Cambridge University Press.

⁷ See: Adams 1986; Ballet 1987, 1991, 2003, 2012; Bailey 1998; Beckh 2013; Bourriau 1981; Colmenero 2017; Czyzewska 2013; Dixneuf 2018; Egloff 1977; Faiers 2005, 2013; Gempeler 1992; Guidotti 2004; Hayes 1972; Lecuyot 2000, 2004; Pierrat 1991, 1996; Rodziewicz 1976; Wodzinska 2010.

Acknowledgments

The author would like to thank first of all Prof. Rosanna Pirelli (UNIOR) for giving her the chance to work on this very interesting material in the framework of the Manqabad archaeological mission. She wishes to express her gratitude also to Dr. Maria Cristina Guidotti and Dr Jane Faiers for their revision of the volume and inspiring suggestions about the classification and identification issues. Many thanks also to Jane Faires who kindly provided the drawings of selected vessels. The author's indebtedness goes also to the director and inspectors of the el-Ashmunein SCA store (Nasser Nanoss, Ali abd al-Dhahar), to Dr. Ezzat Salib G.D. of the Restoration for Archaeological site, and more in general to the Inspectorate of el-Minia, for granting permission to work on the material from Manqabad, their kindness and co-operation. Many thanks are due also to Richard Sadleir for correcting the many drafts of the English text; to Dr. Delphine Dixneuf, Dr. Vincente Barba Colmenero, Dr. Ilona Regulski and Dr. Wolfgang Müller for providing parallels and related bibliography from Asyut and Aswan. Last, but not least, the author owes a great debt also to her family, and to her husband Stefano in particular, for the great support shown during the overall process of studying and writing.

Chapter One.

A selected catalogue of pottery from the SCA el-Ashmunein store and Manqabad site.

Introduction to the catalogue

The work on Manqabad pottery continued through the completion of a documentation season in 2019 at the el-Ashmunein warehouse, and a survey and investigation work conducted on specific areas of the site in 2020, analysing fragments and complete items mostly deriving from the Central and Southern Sectors of the monastic complex. Consequently, the following catalogue includes the description of all the pottery specimens deriving from the documentation work at el-Ashmunein store (see below, 71 items), a selection of pottery derived from the survey of the Central Sector of the site, plus an assemblage of ceramics deriving from a survey and trench pits investigation conducted in the Southern Sector of Manqabad, carried out during the final days of the 2020 mission (see below, 59 items).

The volume, therefore, presents 130 previously unpublished pottery items arranged in data sheets, filled with the inventory numbers of the Minya Inspectorate office, an inventory number assigned during the 2019 and 2020 seasons, provenance information (even if indirect¹), technical data, pictures, drawings (not in all cases) and a parallel related bibliography. The ceramics have been divided into pottery from the el-Ashmunein SCA store (coarse and fine wares, and a selection of amphorae, flagons and lamps) and pottery from the site of Manqabad (coarse and fine wares, and a selection of amphorae and flagons). This parameter has been adopted despite the difficulty of determining between ‘fine’ and ‘coarse’ wares in this particular assemblage, since in many instances what looks like fine ware was probably related to everyday food consumption or cooking activities, and vice versa². As a consequence, the immediately recognizable morphological and/or decorative character has been preferred to classify the material, even if this has meant not having a final homogeneous standard of description.

As regards the typologies of pottery represented in the Manqabad assemblage, the difference between the assemblage previously collected by the Egyptian colleagues investigating the site since 1965 (today kept at the el-Ashmunein warehouse) and the collection of items from the several investigations and surveys conducted by the Italian-Egyptian mission during the 2020 season, has become relevant. In fact, thanks to the collaboration with the specialist in Late Antique pottery, Jane Faires, and the several Egyptian archaeological trainees involved in the 2020 mission, an important number of fragments of

¹ Incordino 2020 pp. 4-5.

² Faires 2005 p. 57.

'missing' typologies have been identified on the site, and thus included in the following database. In this way it has been possible to fill the gap in the documentation previously noticed by the present writer³.

1.1 The pottery from el-Ashmunein SCA store.

During the 2019 season of work, the documentation of pottery was begun at the el-Ashmunein store and concerned 71 pottery vessels out of 245 items included in the inventories of the Inspectorate office of Minya. If adding the 74 items already documented in 2014, the total number of documented pottery specimens kept at el-Ashmunein raises at 145, about 59% of the total. Considering that in the Shutby warehouse are kept 44 more pottery items still uninvestigated, it can be said that the overall documentation process has, so far, produced detailed data for about the half of the ceramic assemblage today kept in the SCA storerooms deriving from the previous investigations at Manqabad.

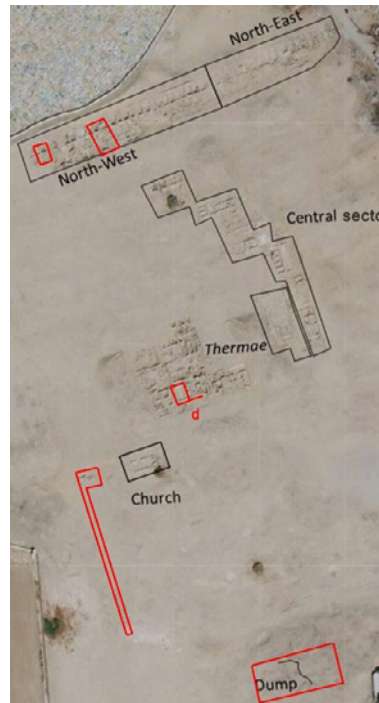
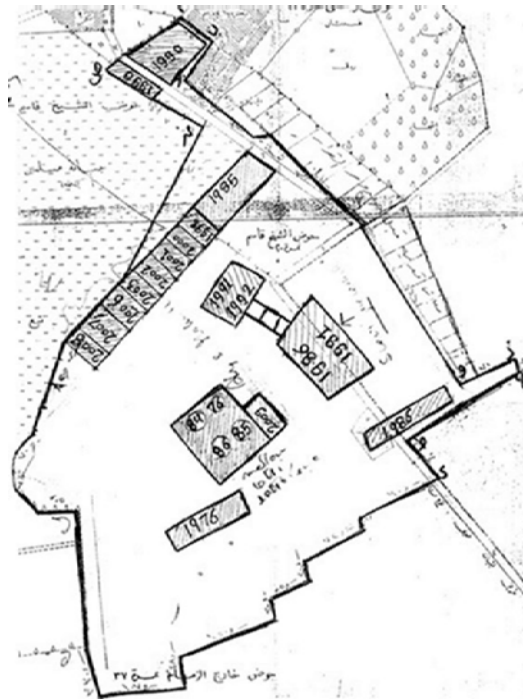
In 2019, the choice of the material to document at el-Ashmunein was not casual as in 2014, but actually a consequence of the partnership between the present writer and the local inspectors, who taken the opportunity to provide a new general setting of the warehouse, in which are kept items not only deriving from Manqabad, but from several more Late Antique sites of Middle Egypt. Therefore, it was possible to check the inventory list of items from the site, as well as their actual presence in the warehouse., also providing a more heterogeneity to the material presented in the following catalogue. In this way, it has been possible to analyse, and digitally reproduce, more items deriving from areas of Manqabad other than the Northern Sector, in which a double row of housing units is located.

In particular, the ceramics included in this second volume are mostly related to the Central Sector of the site, investigated by the previous archaeologist between 1984 and 1992. As a consequence, a collection of data can be provided about the possible function and use of this area of the site, contributing to the general interpretation of the Manqabad monastery.

1.2 The pottery from the site of Manqabad.

The study and survey of pottery material from the Manqabad site has begun in 2020 with the analysis of the ceramic fragments deriving from the surveys conducted in the Central Sector and from the investigation of some trench pits in the Southern Sector of the site. All the diagnostic pieces identified (ca. 525) have been analysed, but only a selection of them (59) has been documented, and included in the digital database of Manqabad pottery, supplementing the corpus of ceramics documented in 2019 at the el-Ashmunein SCA store with the majority of the typologies identified. The remaining diagnostic

³ Incordino 2020 p. 4.



Map of the sectors of the site before 2011 (left) and later identified by the Italian-Egyptian mission (right).

fragments have been buried in the northern section of HU4 housing unit (currently not subject to cleaning). Among this material, it has been possible to collect mostly fragments (about the 73% of the total), but also at least 4 complete vessels, and 4 vessels preserved between 50% and 80% of their original shape. Some glass items (50 ca.) collected mostly during the survey of the Central Sector of the site have been collected too, and stored in the small police building at the entrance to the site, together with all the ceramics included in this catalogue. This material has not been included in following catalogue, but it is currently in the process of being studied and, hopefully, published separately (see plates). Notwithstanding the still incomplete documentation of the Manqabad assemblage, mainly due to the impossibility to conduct petrographical analysis so far⁴, one of the goal of the mission is to constantly publish the documented material⁵, since this material has not been object of a systematic study by the discoverers of the site and could, therefore, represent a useful reference for the study of the Late Antique pottery from Egypt.

⁴ This impossibility can be explained with the ban from the Egyptian authorities to export archaeological material, and to conduct analysis on fresh breaks on the material from the warehouses.

⁵ For a first selection of pottery from Manqabad, see: Incordino 2019 pp. 107-116; Incordino 2020 pp. 83-94; Incordino 2020 (monograph); Incordino 2022 pp. 1-21.

The pottery from el-Ashmunein warehouse.

Coarse wares.

Manqabad 118



Provenance: 1986 area, Central Sector

Inv. No: 901 (Mynia)

Technical data: h 32 cm, max Ø 36 cm, rim Ø 24,5 cm, thickness 0,5 cm.

Bibliography: Guidotti 2004 p.150 n.330; Incordino 2020 p. 16 n. 18.

Storage jar with irregular rim diameter, rounded base and everted rim, wheel made (except for the rim). Painted decoration on the upper half of the body (shoulder) in white garlands/bands. Traces of molted paint on the body.

Manqabad 119



Provenance: 1985 area, HU 29-46 (?)

Inv. No: 899 (Mynia)

Technical data: h 12 cm, max Ø 9 cm base Ø 3 cm, rim Ø 5,5 cm, thickness 0,4 cm.

Bibliography: Egloff 1977 pl.71 n.10; Johnson 1981 pl.10 n.82

Small flagon with one handle starting from the shoulder, tall and slightly ribbed neck. Straight rim, ring base, wheel made. Nile reddish clay with several vegetal inclusions. Possibly used to contain ointment or miniature vessel (?).

Manqabad 120



Provenance: 2006 area, HU8-11 (?)

Inv. No: 898 (Mynia)

Technical data: h 13 cm, max Ø 17 cm
thickness 0,5 cm, rim Ø 14, base Ø 11.

Bibliography: Egloff 1977 pl.73 n.7 (?)

Small ovoid pitcher with one handle and spout, reddish Nile clay with a cream slip. Round base, traces of ribbed inner surface, wheel made.

Manqabad 121



Provenance: 1985 area, HU29-46(?)

Inv. No: 889 (Mynia)

Technical data: h 5,8 cm, max Ø 14 cm
base Ø 5,8 cm, rim Ø 13, thickness 0,3 cm.

Bibliography: Lecuyot 2004 fig. 3 C2, Egloff 1977
Type 285, Jacquet/Gordon 1972 pl. CCIV n.10,
Guidotti 2004 tav. XC 541 e 547, Incordino 2020
p.14 (Manqabad 14).

Small rough cup, with straight tall rim, wheel made (concentric circles on the outer surface). Traces of burning, very similar to other items from HU26-28 (Northern Sector).

Manqabad 122



Provenance: 1985 area, HU29-46(?)

Inv. No: 795 (Mynia)

Technical data: h 5,8 cm, max Ø 10 cm,
thickness 0,2 cm, base Ø 4 cm

Bibliography: Lecuyot 2004 fig. 3 C2, Egloff 1977
Type 285, Jacquet/Gordon 1972 pl. CCIV n.10,
Guidotti 2004 tav. XC 541 e 547, Incordino 2020
p.14 (Manqabad 14).

Small rough cup, with straight tall rim, wheel made (concentric circles on the outer surface). Traces of burning, very similar to other items from the same Housing Units (Manqabad 121) and from HU26-28 (Northern Sector).

Manqabad 123



Provenance: 1985 area, HU29-46

Inv. No: 810 (Mynia)

Technical data: h 5 cm, max Ø 8 cm
thickness 0,4 cm, base Ø 4

Bibliography: Lecuyot 2004 fig. 3 C2, Egloff 1977
Type 285, Jacquet/Gordon 1972 pl. CCIV n.10,
Guidotti 2004 tav. XC 541 e 547, Incordino 2020
p.14 (Manqabad 14).

Small rough cup, with straight tall rim, wheel made (concentric circles on the outer surface). Traces of burning, very similar to other items from HU26-28 (Northern Sector).

Manqabad 124



Provenance: 1992 area, Central Sector

Inv. No: 1237 (Mynia)

Technical data: h 14,3 cm, max Ø 12,8 cm, thickness 0,5 cm, rim Ø 12, thickness 1 cm.

Bibliography: Egloff 1977 pl.73 n.2

Globular vessel with no handles, fragmentary everted rim, fragmentary ring base. Nile pink fabric with many inclusions, short large neck, filter with several irregular holes. Wheel made, lower half of the body slightly ribbed.

Manqabad 125



Provenance: 1986 area, Central Sector

Inv. No: 897 (Mynia)

Technical data: h 20,4 cm, , max Ø 30,8 cm, base Ø 15,5 cm, thickness 0,9 cm.

Bibliography: Egloff 1977 pl.85 n.13

Large bowl of irregular shape (one side is quite concave, possibly a spout?), straight and rounded rim, round base (a support is needed). Rough Nile clay, with assort of white slip on the inner and outer surface. The lower half of the body is ribbed.

Manqabad 126



Provenance: 1991 area, Central Sector

Inv. No: 1133 (Mynia)

Technical data: h 5,4 cm, max Ø 19,5 cm, thickness 0,6 cm, base Ø 14,7 cm, rim Ø 18 cm

Bibliography: Egloff 1977 type 4, Bailey 1998 Pl. 109 D508; Ballet 2012 pl. 12 n. 156, pl. 16 n. 206; Woddzinska 2010 p. 212 pl. 8.7 (UC19455) Incordino 2020 p. 24 (Manqabad 40).

Large ERS (Egyptian Red Slip Ware) plate with straight rounded rim, wheel made. Traces of burning on the outer surface, very similar to other items from the same HU 15-18 (Northern Sector, Manqabad 40).

Manqabad 127



Provenance: 1992 area, Central Sector

Inv. No: 1226 (Mynia)

Technical data: h 5,8 cm, max Ø 10,8 cm thickness 0,5 cm, base Ø 4,5

Bibliography: Lecuyot 2004 fig. 3 C2, Egloff 1977 Type 285, Jacquet/Gordon 1972 pl. CCIV n.10, Guidotti 2004 tav. XC 541 e 547, Incordino 20 p.14 (Manqabad 14).

Small rough cup, with straight tall rim, wheel made (concentric circles on the outer surface). Traces of burning, very similar to other items from HU26-28 and HU29-46 (Northern Sector).

Manqabad 128



Provenance: 1991 area, Central Sector

Inv. No: 1149 (Mynia)

Technical data: h 4,5 cm, max Ø 11,4 cm, thickness 0,3 cm, base Ø 3,8 cm, rim Ø 9,8 cm.

Bibliography: Egloff 1977 pl.39/3; Bailey 1998 pl. 125 D327bis; Jacquet/Gordon 1972 pl. CCIV n.11; Woddzinska 2010 pl. 8.2; Gempeler 1992 T323a; Faiers 2005 pl. 68 n.17, 19; Rodziewicz 1976 figs.27-31; Mackensen et alii 2006 fig.10 n. 6; Incordino 2020 p. 27 (Manqabad 43, 52).

ERS (Egyptian Red Slip Ware) plate with straight rounded rim, wheel made. A small flange runs just under the rim, very similar to other items from the same HU 8-11 (Northern Sector, Manqabad 43, 52).

Manqabad 129



Provenance: 1987 area, Central Sector

Inv. No: 1032 (Mynia)

Technical data: h 5 cm, rim Ø 11,5 cm thickness 0,4 cm, max length 26,2 cm.

Bibliography: Incordino 2020 p. 53 (Manqabad 80); Faiers 2005 fig. 2.59 n. 429, Jacquet/Gordon 1972 pl.CCXXIX 4a-b; Egloff 1977 type 335; Winlcok 1926 p.93 fig. 49a; Faiers 2013 fig. 2.88 n.535, 536.

Clay ladle in rough Nile fabric, rounded base. The spoon is probably wheel made, while the handle is hand made separately and added afterward. Similar to another one found in HU26 (Northern Sector). **Dating:** 6th-7th century AD.

Manqabad 130



Provenance: 1987 area, Central Sector

Inv. No: 1085 (Mynia)

Technical data: h 17 cm, base Ø 5, thickness 1,1 cm, rim Ø 9,5 cm.

Bibliography: Beckh 2013 taf. 134 ZN05-132

Beaker, or more likely bread mould in Nile clay, very rough, wheel made, rounded base. The body is ribbed both inside and outside; the rim is slightly everted and rounded.

Manqabad 131



Provenance: 1987 area, Central Sector

Inv. No: 1028 (Mynia)

Technical data: h 4,5 cm, max Ø 24,7 cm thickness 0,9 cm, base Ø 11 cm.

Bibliography: Bailey 1998 pl.98 G3; Incordino 2020 p. 13 (Manqabad 12).

Rough irregular plate, Nile clay, wheel made, not centered. Ring base, rounded rim, possibly outer red slip now faded.

Manqabad 132



Provenance: 1987 area, Central Sector

Inv. No: 1076 (Mynia)

Technical data: h 3,4 cm, max Ø 11, thickness 0,4 cm, base Ø 2,8 cm.

Bibliography: Lecuyot 2015 fig. 11 SP1043; Incordino 2020 p. 13 (Manqabad 12)

Small bowl with very thin walls, Nile orange/pink fabric (Aswan?). Flat base, wheel made, protruding rounded rim. Possible red slip on the inner surface, now faded.

Manqabad 133



Provenance: 1991 area, Central Sector

Inv. No: 1126 (Mynia)

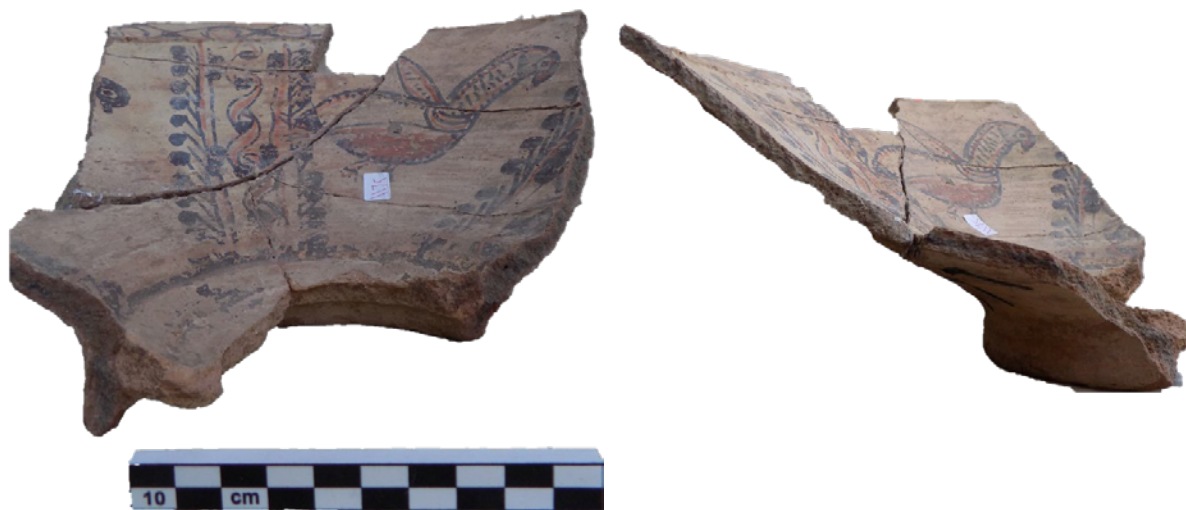
Technical data: h 18,3 cm, max Ø 23,3 cm thickness 0,4 cm, base Ø 12 cm, rim Ø 18,7 cm

Bibliography: Faiers 2005 p. 118 n. 220; Bailey 1998 pl.110 E30; Johnson 1981 pl. 69 n.557.

Cooking globular pot with traces of burning on the base, no handles, wheel made. Nile clay, short neck, slightly everted rounded rim, rounded base. Outer and inner ribbed surface.

Fine wares.

Manqabad 134



Provenance: 1991 area, Central Sector

Inv. No: 1162 (Mynia),

Technical data: h max 14,2 cm, max Ø 26 cm, base Ø 13 cm, thickness 0,6 cm.

Bibliography: Egloff 1977 pl.24 typ. 261; Neyert 2008 E11776; Winlock 1926 pl. XXXIII B; Lecuyot/Bonnefois 2004 pl. 2 n. 24, 25; Bellet et alii 2003 pl. 8.3 n. 54; Incordino 2020 p.36 (Manqabad 55).

Fine decorated plate, reconstructed from 7 pieces. Ring fragmentary base, straight, round and carinated rim. Nile clay with black core. Cream slip and painted decoration on the inner surface in black, reddish and brown. The inner space was probably divided in four vertical sections, separated by vegetal motifs (braided garland), with one horizontal and geometrical freeze running on the rim (eyes motifs?). Only one figurative element is preserved: a bird (dove?) with two paws and one wing, outlined in black. The head of another bird is still visible in the following fragmentary sector, all painted in black. Very similar to another plate from HU8-11.

Manqabad 135



Provenance: 1984 area, Central Sector

Inv. No: 710 (Mynia)

Technical data: h max 6,5 cm, max Ø 7 cm,
base Ø 4,1 cm, rim Ø 6,3 cm, thickness 0,1 cm.

Bibliography: Beckh 2013 taf.18 Typ36:ZN07-304;
Faiers 2005 fig. 2.32 n. 250.

Small cylindrical container with thin walls, flat but raised base, Nile orange fabric with not many inclusion, very homogeneous. Slightly everted straight rim, tall neck, wheel made, no slip. Faded painted decoration on the upper half of the body with geometrical motifs (dots) in black and red.

Manqabad 136



Provenance: 2003 area, HU 11-13/14

Inv. No: 1666 (Mynia)

Technical data: h max 11,6 cm, max Ø 11,5
base Ø 8, rim Ø 8, thickness 0,5 cm.

Bibliography: Bailey 1998 E400, Jaquet/Gordon
1972 pl, CCVIII n.5, Guidotti 2004 tav. VII 39,
Incordino 2020 p. 14 (Manqabad 13).

Small globular vessel, with everted rim, wheel made (concentric circles on the outer surface), rounded base. Red slip on Nile clay, painted geometric decoration in black on neck and upper half of the body. Possible traces of burning on the inside, very similar to other items from HU26-28 (Northern Sector).

Manqabad 137



Provenance: 1991 area, Central Sector

Inv. No: 1151 (Mynia)

Technical data: h max 12,2 cm, max Ø 12,5 cm, cm, Base max Ø 4,8 cm, thickness 0,3 cm.

Bibliography: Egloff 1977 pl.101 n.215

Fine carinated beaker with raised base in fragmentary state of conservation. Straight vertical rim, thin walls, Nile clay with red slip (?) and painted decoration on the upper surface and just under the rim. Geometrical themes painted in black and reddish brown (garlands, dots).

Manqabad 138



Provenance: 1991 area, central Sector

Inv. No: 1161 (Mynia)

Technical data: h max 12,5 cm, max length 15,2 cm, thickness 1,1 cm.

Bibliography: Egloff 1977 type 158/161(?); Neyret 2008 E27288, E10993; Faiers 2013 fig. 2.65 n. 406; Incordino 2020 p. 40 (**Manqabad 60**); Incordino 2019 fig.1.

Decorated fragment of a jar (?), Nile clay with black core, red slip on the outer surface. Painted head of a lady, in black, white and red, with an elaborate headdress. Very similar figure to other items from Manqabad Northern (HU 15-18) and Central Sector.

Manqabad 139



Provenance: 1992 area, Central Sector

Inv. No: 1248 (Mynia)

Technical data: h max 10,5 cm, max length 13 cm, thickness 1,1 cm.

Bibliography: Neyret 2008 E14213; Mohamed 2004 p. 1239; Bailey 1998 pl.123 S19; Guidotti 2004 p. 58 fig. 4 C; Jacquet/Gordon 1972 pl. CCIII n.6; Lecuyot/Bonnefois 1992 fig. 4; Ballet 2012 pl. 52 n. 472.

Decorated fragment of a jar (Saqqara type style?), Nile clay very fine and homogeneous. Black slip on the inner surface (waterproof?) and orange slip on the outer, with painted decoration in black, cream and reddish. Decorative motifs possibly only on the upper half of the body, divided in horizontal registers by geometrical elements. The figurative themes are two animals (lions?) fighting one another, with details outlined in black. *Horror vacui*: each void space is filled with vegetal elements (flowers).

Manqabad 140



Provenance: 1992 area, central Sector

Inv. No: 1249 (Mynia)

Technical data: h max 8 cm, max length 5,2 cm, thickness 10,4 cm.

Bibliography: Egloff 1977 pl. 32 n.3-4; Gempeler 1992 taf. 26 n.5

Decorated fragment of a large storage jar (?), Nile clay very fine, with few inclusions. Black slip on the inner surface (waterproof?) and orange slip on the outer, with painted decoration in black, white and reddish. The figurative theme represents a gazelle with details outlined in black.

Manqabad 141



Provenance: 1987 area, Central Sector

Inv. No: 1080 (Mynia)

Technical data: h max 8,6 cm, max width 18,2 cm, thickness 1,2 cm.

Bibliography: no close parallel found so far

Small ERS (Egyptian Red Slip Ware) plate in fragmentary state of conservation. Fine Nile clay with few inclusions, ring base, rim missing. Painted decoration on the inner surface, with a figure of a lady drawn in black and white. The theme is very similar to other found in other items from the site, but the headdress is different (here the lady has two braids at the side of her head) and the style is less elegant.

Manqabad 142



Provenance: 1986 area, Central Sector

Inv. No: 945 (Mynia)

Technical data: h max 4,5 cm, max Ø 13,7 cm, base Ø 11,2 cm, thickness 0,6 cm.

Bibliography: Neyret 2008 E11756, E11907-2; Bourriau 1981 p. 93; Incordino 2020 p.37 (Mnq 56); Donadoni 1974 tav.65 n.2; Guidotti 2004 p. 128 n.84.

Small plate with raised (ring) base, Nile clay with black core, cream slip. Fragmentary (no rim preserved) with painted decoration on the inner surface in black, brown and reddish. The central figure is a bird, very roughly sketched in black and included in a brown circle. The outer register just below the rim is decorated with geometrical elements in brown (oblique lines).

Amphorae, flagons, lamps, *miscellaneous*.

Manqabad 143



Provenance: 1987 area, Central Sector

Inv. No: 1088 (Mynia)

Technical data: h 54,02 cm, max Ø 38,5 cm, base Ø 19 cm, rim Ø 20,8 cm, thickness 0,9 cm.

Bibliography: Neyret 2008 E27228, Faiers 2013 fig. 2.65 n.406; Incordino 2020 p. 40 n.60

Large storage jar with 8 handles (2 are missing) of different size: 4 larger starting from the rim and 4 smaller starting from the shoulder. Nile clay with black core, short neck, slightly everted rim, ring base, wheel made. Possibly white slip and painted decoration (mostly faded) with black bands just under the rim. Very similar to jar found in HU9-11.

Manqabad 144



Provenance: 1986 area, Central Sector

Inv. No: 973 (Mynia)

Technical data: h max 30, 2 cm, max Ø 31 cm, base Ø 13,3 cm, thickness 0,9 cm.

Bibliography: Egloff 1977 pl.66 n.2; Johnson 1981 pl.57 n.426.

Large storage jar with one handle (missing). Neck and rim missing, ring base, rough Nile clay. Painted decoration all over the body: the upper half with white slip and concentric circles in black and reddish brown; the lower part with red slip and horizontal black lines.

Manqabad 145



Provenance: 1985 area, Central Sector

Inv. No: 745 (Mynia)

Technical data: h 39,2 cm, max Ø 31 cm, base Ø 12,5 cm, rim Ø 16 cm, thickness 1,1 cm.

Bibliography: Pierrat/Bonnefois 2004 p. 164, pl. 6.

Large globular jar with two banded handles, short ribbed neck, straight flat rim. Nile orange clay with few inclusions. Possible red slip, traces of painted decoration in cream waves on the upper half of the body, ring base. The whole surface is pierced with several holes, base included, therefore its possible function could be related with wine/food fermentation (?).

Manqabad 146



Provenance: 1985 area, HU29-46

Inv. No: 774 (Mynia)

Technical data: h 35 cm, , max Ø 27,3 cm, base Ø 15,5 cm, , rim Ø 18,2 cm, thickness 0,7 cm

Bibliography: Egloff 1977 pl.114 n.187.

Large storage jar with two handles starting from the shoulder. Short straight neck and slightly everted rim, rounded base. Nile clay with black core, slightly ribbed outer surface. Painted decoration on the shoulder: white garlands and dots.

Manqabad 147



Provenance: 1987 area, Central Sector

Inv. No: 1095 (Mynia),

Technical data: h 57,7 cm, max Ø 17 cm, rim Ø 6,6 cm, thickness 0,6 cm.

Bibliography: Egloff 1977 type 177/173; Winlock 1926 pl. XXVIII pp.78-79; Neyret 2008 AF12892; Faiers 2013 fig. 2.95 575, 576; Marchand/Dixneuf 2007 fig. 46-47; Faiers 2005 fig. 2.61 n. 444; Guidotti 2004 Tav. XI fig.58; Dixneuf 2011 fig. 158; Incordino 2020 p. 41 (Manqabad 61); Beckh 2013 Taf.9 Abb 26, 27.

LRA7/AE7 in good state of conservation, elongated form, high neck, two banded handles. Nile clay, pointed base, ribbed external surface. In the el-Ashmunein warehouses are recorded about 35 similar items. On the shoulder there is a Coptic inscription: ΠΕΖΩΗΤΩΩ, which could be translated as: “*speaker, orator*”. **Dating:** 7th century AD.

Manqabad 148



Provenance: 1991 area, Central Sector

Inv. No: 1159 (Mynia)

Technical data: h 27 cm, max Ø 14 cm, thickness 0,4 cm, rim Ø 10,5, base Ø 3 cm.

Bibliography: Faiers 2013 fig. 2.79 n. 473; Guidotti 2004 tav. VIII n. 46, tav. IX n. 47; Beckh 2013 taf. 59 Typ 194: ZN 08-177, Typ 194a ZN 08-178; Faiers 2005 fig. 2.50 n. 353.

Globular vessel for water (*saqiya*), with large shot neck, straight round rim. Nile reddish rough clay, inner ribbed surface, button-lying base. Some deformation visible in the central part of the body, similar to **Manqabad 192**.

Manqabad 149



Provenance: 1992 area, Central Sector

Inv. No: 1245 (Mynia)

Technical data: h 73 cm, max Ø 41 cm, rim Ø 29,4 cm, thickness 2 cm.

Bibliography: Egloff 1977 type 158/161(?); Neyret 2008 E27288, E10993; Faiers 2013 fig. 2.65 n. 406.

Large storage jar, Nile clay with black core, two small handles. Short neck, rounded and carinated rim. Ring base, possible white slip, painted decoration completely faded. Very similar to other Manqabad items (**Manqabad 168, 169, 170**).

Manqabad 150



Provenance: 2002 area, HU15-18

Inv. No: 1555 (Mynia)

Technical data: h 37,6 cm, max Ø 29 cm, base Ø 19 cm, rim Ø 8 cm, thickness 0,4 cm.

Bibliography: Egloff 1977 typ. 164; Dixneuf 2011 pp. 82-83; Incordino 2020 p.48 (**Mnq 70**)

LRA1 with two banded handles, round base. Short neck, missing rim. Nile clay with black core, ribbed outer surface. Possible white slip (?), no decoration, very angular shoulder. Similar to another from Manqabad HU 8-11 (Northern Sector).

Manqabad 151



Provenance: 1985 area, HU 29-46 (?)

Inv. No: 900 (Mynia)

Technical data: h 29,02 cm, max Ø 15,5 cm, base Ø 7 cm, rim Ø 3,5 cm, thickness 0,2 cm.

Bibliography: Egloff 1977 type 204/205(?); Bailey 1998 pl.49 J44; Faiers 2005 fig.2.46 n.310; Neyret 2008 AF7578, Incordino 2020 p.69 n.109

Flagon of ovoid shape with two handles, tall and ribbed neck, straight rim and ring base. Cream slip with painted decoration on the upper half of the body (shoulder and neck) in red/brown and black. Geometrical motif (possibly a net) painted in black just above a brown band on the shoulder. Very similar to a fragmentary flagon found in the HU16 at Manqabad. **Dating:** VI-VIIIth cent. AD.

Manqabad 152



Provenance: 1999 area, HU26- 28

Inv. No: 1433 (Mynia)

Technical data: h 46,5 cm, max Ø 16,3 cm, base Ø 14,3 cm, rim Ø 8 cm, thickness 0,9 cm.

Bibliography: Egloff 1977 typ. 164; Dixneuf 2018 pp. 82-83; Incordino 2020 p.48 (**Mnq 70**); Reynolds 2013 p.107 fig. 12.

Narrow-bodied LRA1 amphora (LR?) with two banded handles, tall neck, everted and rounded rim. Rounded reconstructed base, slightly convex. Light orange fabric (Nile clay), homogeneous with few inclusions.

Manqabad 153



Provenance: 1991 area, Central Sector

Inv. No: 1157 (Mynia)

Technical data: h 28 cm, max Ø 13,5 cm, rim Ø 7 cm, base Ø 8,5 cm, thickness 0,4 cm.

Bibliography: no close parallel found so far

Slender pitcher, with one twisted handle starting from the shoulder. Tall cylinder-shape neck, slightly ribbed, straight rim, ring base. Reddish Nile clay, quite faded red slip, painted decoration on the upper half of the body. Vegetal decorative elements (two leaves) painted under two separate arches.

Manqabad 154



Provenance: area 1991, Central Sector

Inv. No: 1134 (Mynia)

Technical data: h 4,3 cm, max Ø 6,3 cm, base Ø 3,8 cm, thickness 0,3 cm.

Bibliography: no close parallel found so far

Small incense burner with traces of one handle, 3 holes and rounded rim. Nile rough clay, flat base. Traces of burning next to the holes.

Manqabad 155



Provenance: 1999 area, HU 26-28

Inv. No: 1437 (Mynia),

Technical data: h 34,5 cm, max Ø 18 cm, base Ø 9 cm, rim Ø 6,2cm, thickness 0,6 cm.

Bibliography: Egloff 1977 type 204/5(?); Neyret 2008 AF7578; Faiers 2005 fig. 2.46 n. 310; Bailey 1998 pl.49 J44; Incordino 2020 p. 43 (Mnq 63).

Ovoid amphoriskos, with two handles starting from the shoulder, Tall ribbed neck, straight rim, ring base, one spout. White slip, Nile clay with black core. There are two very faded inscriptions on the body. **Dating:** 6th-7th century AD.

Manqabad 156



Provenance: 1992 area, Central Sector

Inv. No: 1243 (Mynia)

Technical data: h 50,8 cm, max Ø 23,5 cm rim Ø 10 cm, base Ø 16 cm, thickness 1,2 cm.

Bibliography: Egloff 1977 typ. 164; Dixneuf 2011 pp. 82-83; Incordino 2020 p.48 (**Mnq 70**).

LRA1 amphora with two banded handles starting from the shoulder. Tall ribbed neck, rounded and slightly everted rim. Nile clay, round base. The outer surface is completely ribbed. Very similar to other items found in HU 8-11 (Northern Sector, **Manqabad 70**).

Manqabad 157



Provenance: 1992 area, Central Sector

Inv. No: 1250 (Mynia),

Technical data: h max 11,5 cm, max Ø 16,5 cm, thickness 0,7 cm.

Bibliography: Egloff 1977 type 204(?); Neyret 2008 AF5353; Guidotti 2004 n. 293, 295-298; Incordino 2020 p. 45 (Manqabad 65).

Ovoid flagon in fragmentary state of conservation, reconstructed from three pieces. Nile reddish clay with black core, red polished slip and painted decoration. The inner surface is coated with a black slip (resin?), possibly in order to make the vessel waterproof (wine container?). Figurative decoration painted in black and white on the shoulder (a hare) and on the upper part of the body (a male face with traces of an unclear inscription).

Manqabad 158



Provenance: 2003 area, HU 11-13/14

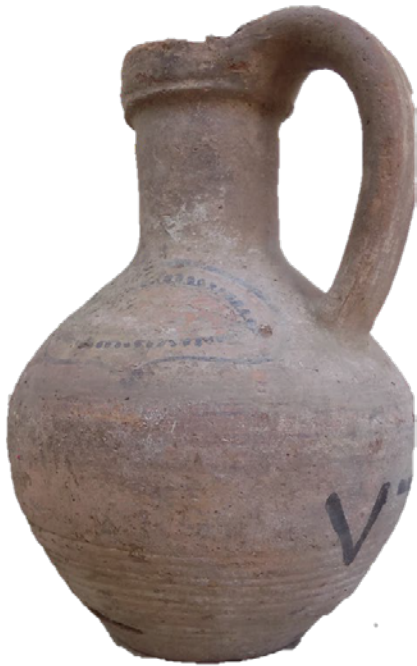
Inv. No: 1667 (Mynia)

Technical data: h max 18 cm, max Ø 12,5 cm, base Ø 8 cm, rim Ø 5cm, thickness 0,3 cm.

Bibliography: Bailey 1998 pl.99 n. J185; Gempeler 1992 taf. 35 n. 5; Jacquet/Gordon 1972 Pl.CXCIII n.2; Egloff 1977 pl. 72 n. 4.

Flagon of globular shape, with one banded handle starting from the shoulder. Fragmentary carinated neck, rim missing, ring base. Nile clay, red slip with painted decoration on the upper half of the body in one register limited by geometrical elements (horizontal lines in brown). Spiral decoration in cream and black details, divided by dark arches.

Manqabad 159



Provenance: 1985 area, Central Sector

Inv. No: 768 (Mynia)

Technical data: h 24 cm, max Ø 15,5 cm, base Ø 7,2 cm, thickness 0,5 cm.

Bibliography: Ballet et alii 2012 pl. 52 n. 464

Flagon of globular shape, with one banded handle starting from the shoulder, with one spout. Tall, straight neck, ring base. Nile clay with few inclusions, painted decoration on the upper half of the body in one register limited by geometrical elements. The decorative theme is vegetal (leaves) in reddish with black details and outline. Lower half of the body slightly ribbed.

Manqabad 160



Provenance: 1986 area, Central Sector

Inv. No: 975 (Mynia)

Technical data: h 16,5 cm, max Ø 12 cm, rim Ø 6,6 cm, base Ø 10,7 cm, thickness 0,4 cm.

Bibliography: Ballet et alii 2012 pl. 43 n. 387

Small pitcher with no handles of globular shape, tall cylindric neck, fragmentary everted rim. Ring base, light orange Nile clay. Painted decoration with black and brown bands on the neck on white slip. There is an inscription in Coptic on the shoulder, with the Christ monogram and possibly also the name of the pitcher's owner XC IOYΛE (Christ Ioule).

Manqabad 161



Provenance: 1985 area, Central Sector

Inv. No: 1010a (Mynia)

Technical data: h max 17,8 cm, max Ø 13,8 cm
base Ø 6,7 cm, thickness 0,4 cm.

Bibliography: Bailey 1998 pl. 100 J238

Flagon of ovoid shape, incomplete but reconstructed from at least 8 fragments. Neck, rim and handles missing, ring base. Ribbed inside surface, Nile reddish clay with black core, red slip and painted decoration on the upper half of the body. The decorative themes are geometrical (bands and dots) in black and brown.

Manqabad 162



Provenance: 1992 area, Central Sector

Inv. No: 1236 (Mynia)

Technical data: h 22 cm, max Ø 14,5 cm,
base Ø 6,3 cm, rim Ø 6,7 cm, thickness 0,5 cm.

Bibliography: Ballet et alii 2012 pl.48 n. 429

Ovoid flagon with probably one handle (traces of it on the shoulder), high fragmentary neck, rim missing. Nile clay with black core, ring base, filter inside the neck with five holes. Painted decoration on neck and body in black and reddish/brown, geometrical motifs (bands and dots).

Manqabad 163



Provenance: 1985 area, HU 29-46 (?)

Inv. No: 762 (Mynia),

Technical data: h max 24,6 cm, max Ø 21 cm, base Ø 10 cm, rim Ø 7 cm, thickness 0,6 cm.

Bibliography: Egloff 1977 pl.24 n. 12; Bailey 1998 S186; Incordino 2020 p.44 (Manqabad 64).

Flagon of globular/ovoid shape, with two banded handles starting from the neck. Fragmentary neck, rim missing, ring base. Nile clay with several vegetal inclusions. Painted decoration all over the body in different registers on a cream slip: the lower half has vegetal themes (palm leaves) as vertical divider, with depiction of birds (bad state of conservation). The shoulders are decorated with animal figures (hares, and gazelles) in couples facing each other. The figures are in reddish/brown, with all relevant details and contours in black. Every empty spaces between the figures is filled with circular dots (*horror vacui*).

Manqabad 164



Provenance: 1992 area, Central Sector

Inv. No: 1251 (Mynia),

Technical data: h max 17,5 cm, lenght max 24,5 cm, thickness 0,7 cm.

Bibliography: Egloff 1977 type 204(?); Neyret 2008 AF5353; Guidotti 2004 n. 293, 295-298; Incordino 2020 p. 45 (**Manqabad 65**).

Ovoid flagon in fragmentary state of conservation, reconstructed from three pieces. Nile orange clay, very fine, red slip. Painted decoration with figurative themes (hare) in black and white on a reddish background. The figure of the animal and the vegetal element are outlined in black. Probably, the original decoration was divided into different registers.

Manqabad 165



Provenance: 1991 area, Central Sector

Inv. No: 1172 (Mynia)

Technical data: h max 9 cm, max width 10 cm thickness 0,4 cm.

Bibliography: Gempeler 1992 taf. 42 n.8.

Small flagon in fragmentary state of conservation, with painted decoration in black on cream slip. Nile brown clay with vegetal inclusions, ribbed inner surface. The decorative motifs represent a bird (dove?) inside a square register limited by vertical bands.

Manqabad 166



Provenance: 2003 area, HU 11-13/14
Inv. No: 1672 (Mynia)
Technical data: h 24,3 cm, max Ø 21 cm, base Ø 8,7 cm, rim Ø 15,2 cm, thickness 0,5 cm.
Bibliography: Bailey 1998 pl.58 n.L12

Ovoid jar with two banded handles starting from the shoulder. Ribbed neck, everted rim in fragmentary state of conservation with two spouts. Ring base, Nile clay with cream slip, white paint (waterproof?) on the inner surface. Painted decoration in brown and black on the body, geometric (spirals, dots) and vegetal themes.

Manqabad 167



Provenance: area 1985, Central Sector
Inv. No: 770 (Mynia)
Technical data: h 28,2 cm, max Ø 21, base Ø 8,4 cm, rim Ø 12,8 cm, thickn.0,5 cm.
Bibliography: Egloff 1977 pl. 24 n.12; Bailey 1998 S186; Incordino 2020 p. 44 (Manq.64).

Flagon of ovoid shape with two handles starting from the shoulder. Tall and straight neck, fragmentary rim, flat base. Filter inside the neck with 18 holes (wine?) not at equal distance from one another (random disposition). Very similar to a flagon found in the HU11-13/24 (Northern Sector,

Manqabad 168



Provenance: 1992 area, Central Sector

Inv. No: 1189 (Mynia)

Technical data: h max 46 cm, base Ø 12,5 cm, max Ø 32, thickness 1,1 cm, neck Ø 18.

Bibliography: Egloff 1977 type 158/161(?); Neyret 2008 E27288, E10993; Faiers 2013 fig. 2.65 n. 406; Incordino 2020 p. 40 (**Manqabad 60**); Incordino 2019 fig1.

Large storage jar, Nile clay with possible red slip, handles missing, triangular fragmentary rim and short carinated neck decorated with painted black dots. Ring base, cylinder-shape body, painted decoration, divided in four registers under arches on the upper half. The main themes are vegetal (two large leaves), geometrical and figurative. The latter in particular seem to be identified with a bejewelled lady frequent to find among the Manqabad decorative assemblage. The decoration is painted in black, reddish/brown and white. Very similar to an Asyut complete jar (Turin Museum Suppl. 15626).

Manqabad 169



Provenance: 1992 area, Central Sector

Inv. No: 1252 (Mynia)

Technical data: h 77,3 cm, rim Ø 35,5 cm, max Ø 45,2 cm, thickness 2,4 cm.

Bibliography: Egloff 1977 type 158/161(?); Neyret 2008 E27288, E10993; Faiers 2013 fig. 2.65 n. 406; Incordino 2020 p. 40 (Manqabad 60); Incordino 2019 fig1.

Large storage jar, Nile clay with black core, handles missing (possibly 2 according to the traces). Short neck, rounded and carinated rim. Ring base, cream slip, painted decoration in black and red on the upper half of the body, divided into six registers (tondos). The main themes are figurative: three animals (a bird/dove, a gazelle and a hare), and a lady's face (very frequent among the Manqabad assemblage: **Manqabad 56, 60, 168**). Two more motifs are vegetal (papyrus and a knotted plant). Very similar to an Asyut complete jar (Turin Museum Suppl. 15626).

Manqabad 170



Provenance: 1991 area, Central Sector

Inv. No: 1146 (Mynia)

Technical data: h max 39,3 cm, base Ø 9 cm, max Ø 25, thickness 0,8 cm, neck Ø 14,5.

Bibliography: Egloff 1977 type 158/161(?); Neyret 2008 E27288, E10993; Faiers 2013 fig. 2.65 n. 406; Incordino 2020 p. 40 (**Manqabad 60**); Incordino 2019 fig1.

Large storage jar, Nile clay with possible red slip, traces of two handles, short and carinated neck and slightly everted rim. Ring base, cylinder-shape body, very eroded painted decoration, divided in four registers through vertical vegetal elements on the upper half. The main themes are vegetal (two large leaves), geometrical and figurative. The latter in particular seem to be identified with a bejewelled lady frequent to find among the Manqabad decorative assemblage. The decoration is painted in black, reddish/brown and white. Very similar to an Asyut complete jar (Turin Museum Suppl. 15626) and to the previous item (**Manqabad 168**).

Manqabad 171



Provenance: 1985 area, HU 29-46 (?)

Inv. No: 775 (Mynia)

Technical data: h max 28,5 cm, base Ø 5,5 cm, max Ø 21, thickness 0,6 cm.

Bibliography: Egloff 1977 pl. 24 n.12; Bailey 1998 S186; Incordino 2020 p. 44 (Manqabad 64).

Flagon of ovoid shape with two handles starting from the shoulder. Tall and straight neck, everted and carinated rim in a fragmentary state of conservation, flat base. Filter inside the neck with 18 holes (wine?) not at equal distance from one another (random disposition). Traces of cream slip on neck and handles. Very similar to a flagon found in the HU8-11 (?) at Manqabad.

Manqabad 172



Provenance: 1986 area, Central Sector

Inv. No: 1010 (Mynia)

Technical data: h 20,7 cm, base Ø 8,2 cm, rim Ø 6,8 cm, max Ø 15,5 cm, thickness 0,5 cm.

Bibliography: Bailey 1998 pl. 51 n. J224.

Small flagon with two rounded and banded handles, starting from the shoulders. Tall ribbed neck, rounded carinated rim. Flat base and fragmentary filter inside the neck. Ribbed inner surface, and incised decoration of parallel lines on the shoulders.

Manqabad 173



Provenance: 1991 area, Central Sector

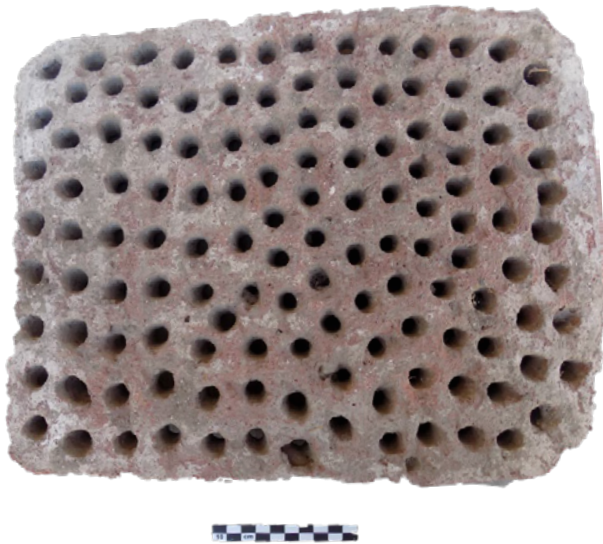
Inv. No: 1098 (Mynia)

Technical data: h max 30,7 cm, length 66 cm, width 30 cm, thickness 1,8 cm.

Bibliography: de la Roque 1933 p. 77 Inv.no. 5730.

Support for amphorae or jars, with three main holes (the biggest is in the middle) decorated with wavy rims (still visible finger prints, hand made). Nile rough clay with black core. The front is decorated with 8 more holes of different size and a central draining hole. The support is decorated with an applied motif of a cross (?) and two circles. No traces of painting.

Manqabad 174



Provenance: 1985 area, Central Sector

Inv. No: 867 (Mynia)

Technical data: length 41 cm, width 32,5 cm, thickness 3,5 cm.

Bibliography: no close parallel found so far

Clay *mashrabiya* possibly used for the ventilation of the underground rooms of the Housing Units. About 104 holes not regularly distributed.

Manqabad 175



Provenance: 1986 area, Central Sector

Inv. No: 941 (Mynia)

Technical data: h 10,2 cm, max Ø 10 cm, base Ø 3,3, rim Ø 2,8 cm, thickness 0,8 cm.

Bibliography: Beckh 2013 taf.69 Typ208:ZN 08500.

Vessel for ointment with one banded handle starting from the shoulder, short carinated neck, straight rounded rim. Nile clay with red slip, very angular shoulder, ring base. Incised decoration on the upper half of the body with 4 vertical bands starting from the neck.

Manqabad 176



Provenance: 1986 area, Central Sector

Inv. No: 926 (Mynia)

Technical data: base Ø 4,5 cm, length 11,6 cm, width 8 cm, spout Ø 2.

Bibliography: Donadoni 1974 tav.42 n. 37

Small carinated oval lamp, with one handle, ring base and a broken and burned spout. Nile clay with a possible red slip. In the central area there is a low relief decoration of a Christian cross, with a small hole in the middle. The decorative motif is the Greek cross, with four arms of equal length, symbol of the divine nature of Christ.

Manqabad 177



Provenance: 1992 area, Central Sector

Inv.No: 1213 (Mynia)

Technical data: h max 13,3 cm, max Ø 15,5 cm, rim Ø 12 cm, thickness 0,9 cm.

Bibliography: no close parallel found so far

Neck of an amphora or support (?), with a possible filter in the neck. Nile clay with a black core, cream slip, rounded carinated rim. Painted decoration in black with geometrical motif (braids, dots, lines) running just below the rim.

Manqabad 178



Provenance: 1991 area, Central Sector

Inv. No: 1170 (Mynia)

Technical data: max length 9 cm, max width 5 cm, thickness 0,2 cm.

Bibliography: no close parallels found so far

Small oval lamp in fragmentary state of conservation, reconstructed from three pieces. Flat base, one hole on the top, marl clay (cream color), very fine, no inclusions. Relief decoration on the top surface with the figure of a raider (possibly a saint?) with a spear in his hand, surrounded by spirals. The latter are also present all around the central hole.

Manqabad 179



Provenance: 1999 area, HU 26-28

Inv. No: 1432 (Mynia)

Technical data: h 4,2 cm, max length 10,2 cm max width 6,8 cm.

Bibliography: no close parallels found so far

Lamp in a fragmentary state of conservation, handle and point missing. Possibly marl clay very homogeneous. Oval base, one central hole with a relief decoration representing a religious figure (saint?). He has one arm on his chest and the other one stretched out holding a cross, and a decorated garment.

Manqabad 180



Provenance: 1986 area, Central Sector

Inv. No: 905 (Mynia)

Technical data: max Ø 9,5 cm, length 15 cm, width 12,5 cm.

Bibliography: Andrews 1994 p.35; De Velde 1992 p.572;

https://thebritishmuseum.org/collection/object/G_1888-0601-661

Animal-shaped vessel (Pig/sow?), Nile clay, red slip. Two legs, neck and fore part are missing. Presence of a front hole (possibly a spout), and of a strainer on the back with 5 holes. Possible handle on the rare side (fragment still visible), directly attached to the neck. Painted decoration in brown with circular dots. Maybe imitation of Cypriot types known from Cypro-Achaic and later contexts in Cyprus, but produced in Egypt.

Manqabad 181



Provenance: 1986 area, Central Sector

Inv. No: 976 (Mynia)

Technical data: h max 17,6 cm, max length 22,5 cm, thickness 0,6 cm.

Bibliography: Beckh 2013 typ.201; Museum für Byzantinische Kunst Berlin (Edfu)
<https://recherche.smb.museum/detail/1725752/ampulle-in-form-eines-fisches>

Fish-shaped ovoid vase, Nile clay with white slip and painted decoration in brown. The head is missing, tail and fins (partially broken) are modelled in raised relief and applied separately. The original spout could have been located in the mouth of the fish, since the only opening is actually in the fore part of the vessel, while the rear section of the tail is closed. The presence of a handle just below the mouth of the vessel could be suggested because of some more added relief elements, now broken. The lower fin is completely painted above the fish's abdomen, and is represented by a long horizontal line with more oblique lines branching off of it. Two lower fins in relief have been added to serve also as standing support for the vessel, as well as the gills, added to both sides of the fish' head. The fish probably can be identified as a 'boliti' (*Tilapia nilotica*). Very few parallels among the Late Antique Egyptian assemblages.

Dating: possibly 5th-6th. Century AD.

Manqabad 182



Provenance: 1991 area, Central Sector

Inv. No: 1139 (Mynia)

Technical data: h max 14,4 cm, width 5 cm.

Bibliography: Kaufmann 1998 p.119; Menci, Pesi 2012 p. 23-24; Frankfurter 2015 p. 201; Incordino 2022 pp. 6-7.

Terracotta figurine, Nile reddish clay, with painted decoration on white plaster. It represents a standing female figure with an elaborate headress ('halo'). No pierced holes for earrings, neck break repaired and decorated with a white collar (necklace?). Steep nose and breasts are in relief. More vertical white panels run from each armpit down length of the body. The lower abdomen is marked by two oblique red lines (\wedge) above the legs, which are divided by a shallow channel. The arms were probably outstretched, but are now missing, as well as the feet and the right part of the headress. Quite flare heaps, waist well marked, and a slight depression indicates the navel. The back is flat and white plastered.

Manqabad 183



Provenance: 1991 area, Central Sector

Inv. No: 1132 (Mynia)

Technical data: h max 14 cm, width 5,4 cm.

Bibliography: Kaufmann 1998 p.119; Menci, Pesi 2012 p. 23-24; Frankfurter 2015 p. 201; Incordino 2022 pp. 5-6.

Terracotta figurine, Nile reddish-brown clay, represents a standing female figure with a 'spade' shaped flat head, possibly pierced on each side for earrings (very small holes, headdress?). General state of conservation very poor, so it is not possible to see the original (white?) plaster and painted decoration, nor the face details. Only the shape of the steep nose and the arms crossed on the breasts is still quite visible. The lower abdomen is roughly marked by a single oblique line on the left side of the figure (incomplete?), the hips are slightly flare, while the back is flattened. Quite similar to the precedent item (**Manqabad 182**).

Manqabad 184



Provenance: 2003 area, HU 11-13/14

Inv. No: 1656 (Mynia)

Technical data: h max 9 cm, Ø base 4,2 cm, thickness 5,3 cm.

Bibliography: Bailey 2008 n.3733 (BM EA 73555)

Applied decorative element in terracotta in the form of a head of a horse, or fragmentary figurine. The head is pierced, one ear is missing, the face is prominent. Nile clay, possibly reddish slip with painted decoration in black, red and brown. Details of the mane are rendered with black waves, while the eyes were added separately (black clay dots).

Manqabad 185



Provenance: 1991 area, Central Sector
Inv. No: 1140 (Mynia)
Technical data: h 9,5 cm, Ø base 4,3 cm.
Bibliography: Bailey 2008, n.3403 (EA73548)

Terracotta figurine representing a male standing figure with a lamb in his arms, head missing. White slip, Nile clay with black core, no traces of painted decoration, round and concave base.

Manqabad 186



Provenance: 1991 area, Central Sector
Inv. No: 1139 (Mynia)
Technical data: h max 6,5 cm, Ø base 5,4 cm.
Bibliography: Donadoni 1974 tav. 49 n.17.

Terracotta figurine of a bird (dove?), possibly an application for a vessel to be added separately, ring concave base. Beak, tail and wings elements are present, eyes details marked with two depressions.

Manqabad 187



Provenance: 1986 area, Central Sector

Inv. No: 923 (Mynia)

Technical data: h 4,5 cm, max Ø 30,7 cm, base Ø 9 cm, thickness 0,4 cm.

Bibliography: Guidotti 2004 Fig.1 pp. 54-56; Beckh 2013 taf.87 Typ 318:ZN 08-390; Faiers 2013 Fig.2.10 n.64; Bailey 1998 pp. 91-92 pl.55.

Compartments (6) dish with one depression in the middle, fragmentary state of conservation. The compartments are roughly of the same size (average Ø 7 cm). Nile clay, fine and pink fabric (Aswan?), red slip (?). Painted decoration in brown/black with geometrical/vegetal motifs along the rim and between the compartments. Function still unknown, possibly domestic.

Dating: 6th-7th century AD.

Manqabad 188



Provenance: 1986 area, Central Sector

Inv. No: 924 (Mynia)

Technical data: h 10 cm, max width 6,9 cm, thickness 0,1 cm.

Bibliography: Ballet et alii 2012 pl.61 n. 599

Small pilgrim flask with 2 handles (one is missing), fragmentary rim. Nile orange clay, fine with very few inclusions. Very eroded surface, no visible traces of any decoration, nor slip.

The pottery from Manqabad site.

Coarse wares.

Manqabad 189



Provenance: Dump of Northern Sector

Inv. No: S45

Technical data: h max 4,1 cm, max Ø 11,2 cm
thickness 0,7 cm, top Ø 3,4 cm.

Bibliography: no close parallels found so far

Fragmentary lid with orange slip both outside and inside, tiny inclusions. Well preserved relief top. Small flange under the top.

Manqabad 190



Provenance: Dump of Northern Sector

Inv. no: S46

Technical data: max length 16 cm.

Bibliography: Egloff 1977 pl. 89 n. 2

Fragmentary square lid probably used to seal large storage jars. Rough Nile clay with several vegetal inclusions. Incised decoration (hand made with fingers) with geometrical elements (concentric lines).

Manqabad 191



Provenance: Southern Production Area

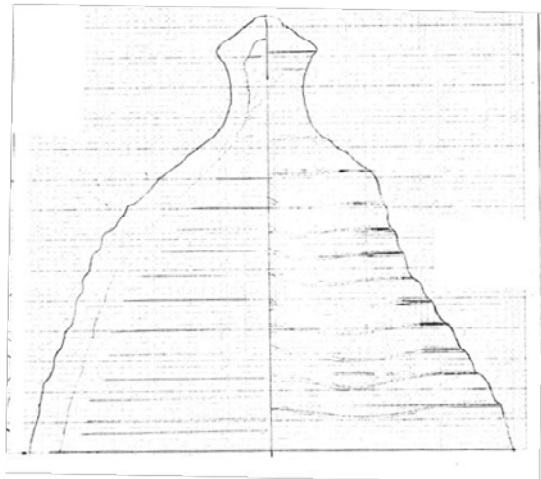
Inv. No: S47

Technical data: max length 11 cm, max wide 8 cm
thickness 0,8 cm.

Bibliography: Faiers 2005 fig.2.53 n. 403

Fragmentary and squashed lid, rough Nile clay with black core. Well preserved top with a small flange under the top. Waste of pottery production.

Manqabad 192



Provenance: Southern Production Area

Inv. no: S48

Technical data: max length 15 cm, max wide
14,5 cm, thickness 0,5 cm.

Bibliography: Faiers 2013 fig. 2.79 n. 473;
Guidotti 2004 tav. VIII n. 46, tav.IX n. 47; Beckh
2013 taf.59 Typ 194: ZN 08-177

Lower half of a squashed *saqiya* water vessel in rough Nile clay. Traces of slip on the outside surface. Well preserved point base. Possible waste of pottery production.

Manqabad 193



Provenance: Southern Production Area

Inv. No: S49

Technical data: max length 15,5 cm, max wide 8,5 cm, thickness 1,8 cm.

Bibliography: Guidotti 2004 tav.XIII n. 70 (?)

Body fragment of a large storage jar in rough Nile clay with black core. Peculiar relief decoration (?) in form of a circle with two crossing line inside, possible representation of a wheel of a cart?

Manqabad 194



Provenance: Southern Production Area

Inv. no: S50

Technical data: h 5,7 cm, max Ø 12 cm.

Bibliography: Egloff 1977 285; Jacquet/Gordon 1972 pl. CCIV n.10; Lecuyot 2004 Fig.3 C2; Guidotti 2004 tav. XC 541, 547; Incordino 2020 p. 51 (**Manqabad 75**).

Small cup of rough Nile clay with black core, slightly ribbed surface, irregular diameter. Rounded rim, wheel made, flat base. Quite similar to items found in the HU2 N (Northern Sector).

Manqabad 195



Provenance: Southern Production Area

Inv. No: S51

Technical data: max length 3,5 cm, max wide 6,2 cm, thickness 0,7 cm, reconstructed Ø 10 cm.

Bibliography: Bailey 1998 pl.59 n. M14

Fragmentary small bowl in Nile clay, with straight and black slipped rim, base missing. Red/orange slip on the inside and outside.

Manqabad 196



Provenance: Southern Production Area

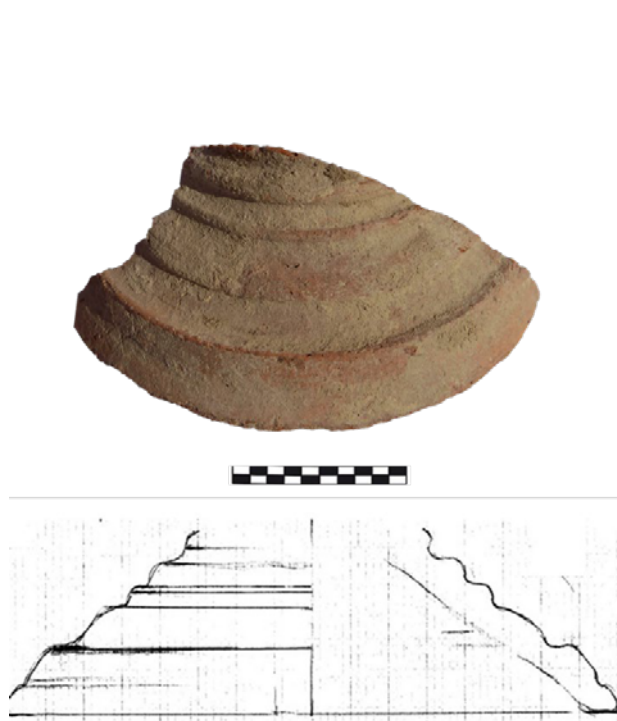
Inv. no: S52

Technical data: h 3,6 cm, max wide 1,9 cm.

Bibliography: Faiers 2005 fig. 3.11 n, 89.

Banded handle of a flagon or bottle, in Nile clay, with red slip.

Manqabad 197



Provenance: Southern Production Area

Inv. No: S53

Technical data: max length 11,5 cm, max width 8,2 cm, thickness 0,8 cm.

Bibliography: Faiers 2005 fig. 2.53 n. 404; Egloff 1977 pl.55 n.1, 4

Fragment of a lid in coarse orange/red Nile fabric with black core. Wheel made, outer ribbed surface, with traces of cream slip.

Manqabad 198



Provenance: Southern Production Area

Inv. no: S54

Technical data: h 2,9 cm, max Ø 5,5 cm, top Ø 2 cm.

Bibliography: Beckh 2013 taf.57 Typ167: ZN05371; Guidotti 2004 tav.I n.1; Faiers 2005 Fig. 2.53 n. 393; Egloff 1977 pl.55 n.3.

Fragment of a lid in Nile clay from Aswan, lower half missing. Orange slip inside and outside, wheel made.

Manqabad 199



Provenance: Southern Production Area

Inv. No: S55

Technical data: max h 3.9 cm, thickness 0,6 cm
max Ø 9,2 cm.

Bibliography: Gempeler 1992 T320

Fragment of a flagon (?) with a spout in Nile rough clay with black core. Rim, base and lower body missing. Wheel made, cream slip. Traces of an incised inscription: "M....", maybe the monogram of the Virgin Mary (?).

Manqabad 200



Provenance: HU 12 N

Inv. no: S56

Technical data: h max 4 cm, max width 5,2 cm,
thickness 0,7 cm, reconstructed Ø 26 cm.

Bibliography: no close parallel found so far

Fragment of a large bowl/dish in Nile clay M5, with rounded rim, base missing. Burnished surface inside and outside. Slight carination under the rim.

Manqabad 201



Provenance: Dump Southern Production Area

Inv. No: S57

Technical data: max length 9,8, 4 cm, max width 9,2 cm, thickness 0,7 cm.

Bibliography: Faiers 2005 p. 118 n. 220; Bailey 1998 pl.110 E30; Johnson 1981 pl. 69 n. 557.

Fragment of a cooking pot in Nile clay, with slightly everted rim. Base and lower half of the body missing. Traces of blackened on the outside (burnt?) on the shoulder. Similar to a complete item found in the Central Sector (**Manqabad 133**).

Manqabad 202



Provenance: HU 12 N

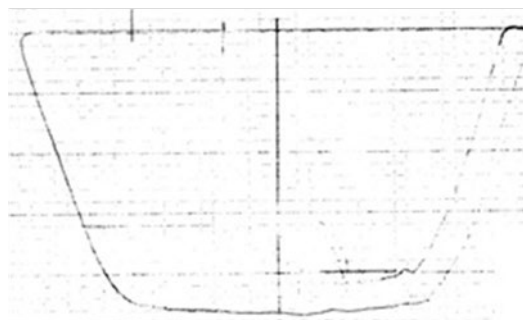
Inv.No: S58

Technical data: max length 10,3 cm, max width 5,5 cm, thickness 0,8 cm.

Bibliography: Faiers 2005 p. 118 n. 220; Bailey 1998 pl.110 E30; Johnson 1981 pl. 69 n. 557.

Fragment of a cooking pot in Nile clay M6, with everted rounded rim. Base and lower half missing. Traces of burning outside. Red slip on the inner and outer surface. Similar to the precedent and to the item found in the Central Sector (**Manqabad 133**).

Manqabad 203



Provenance: Southern Production Area

Inv. No: S59

Technical data: max h 7,5 cm, thickness 0,6 cm, max Ø 8,2 cm.

Bibliography: Gempeler 1992 T320, T636; Ballet/Scandon 1991 p. 506 fig.3; Beckh 2013 taf.89 typ. 333:ZN08-466; Ballet et alii 2012 pl. 4 n. 57.

Fragmentary small cup in Nile clay, with straight and rounded rim, and uneven base. Stamped decoration (?) on the inner base (circle). Morphologically similar to another item found in HU26 (**Manqabad 100**).

Manqabad 204



Provenance: Dump Southern Production Area

Inv. No: S60

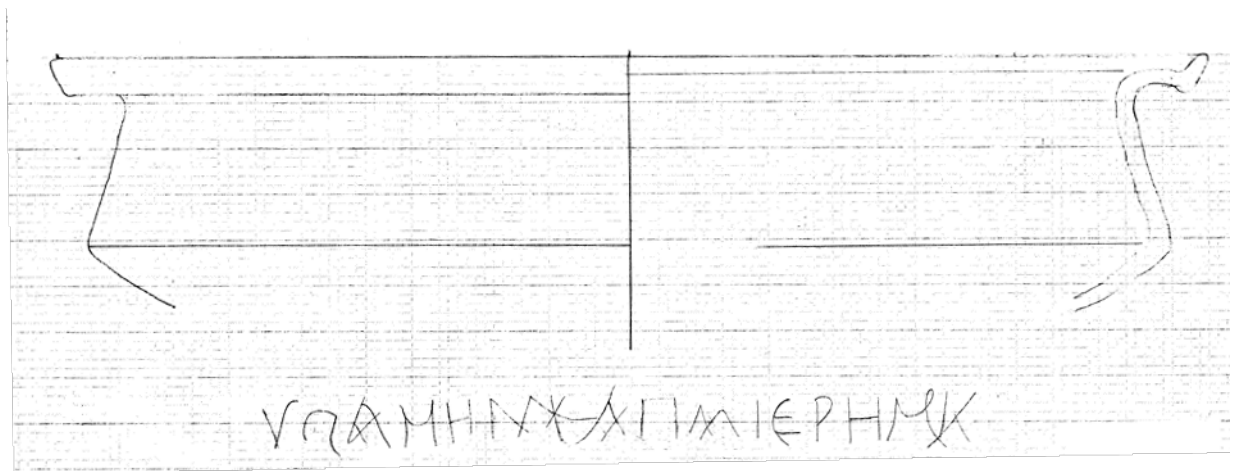
Technical data: max length 23,4 cm, max width 11,4 cm, thickness 0,7 cm.

Bibliography: Faiers 2005 p. 118 n. 220; Bailey 1998 pl.110 E30; Johnson 1981 pl. 69 n. 557.

Fragment of a cooking pot in Nile clay M4, with slightly everted rim, with a sort of wavy decoration (?) only on a portion. Base and lower half of the body missing. Traces of burn outside, just under the rim. Similar to a complete item found in the Central Sector (**Manqabad 133**).

Fine wares.

Manqabad 205



Provenance: Dump Southern Production Area

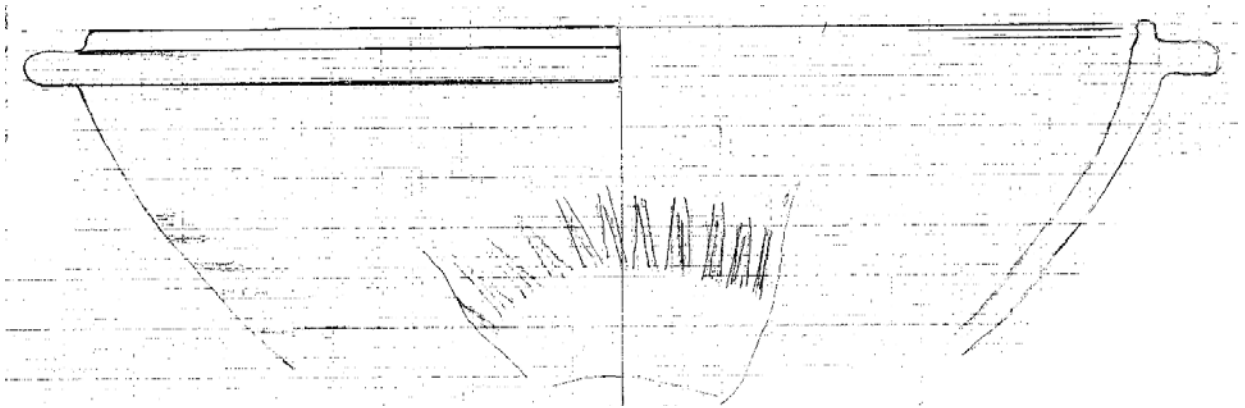
Inv. No: S61

Technical data: max length 13,4 cm

Bibliography: Faiers 2005 fig. 2.5 n. 29;

Two fragments of an Aswan Red Slip Ware bowl, with an everted flat rim (slip also on the inside surface). The rim has a text, possibly a prayer, inscribed on the surface, which reads: "[...]Ν ΣΑΜΗΝ ✠ ΑΠΑ ΙΕΡΗΜΙΑ" ([*lacuna*] Amen ✠ Apa Geremia).

Manqabad 206



Provenance: HU 12 N

Inv. No: S62

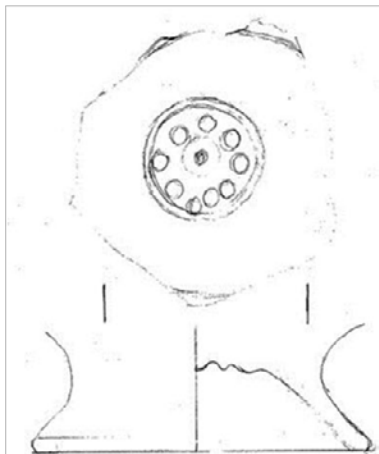
Technical data: max max Ø 24 cm

Bibliography: Egloff 1977 typ.30; Bailey 1998 pl.125 D327 bis, pl. 114 C350; Colmenero 2017 fig. 12, 15; Faiers 2005 pl. 68 n. 21, 24; Winlock 1926 fig. 37 S p.86; Rodziewicz 1976 fig. 47-48; Incordino 2020 p. 18 (Manqabad 20).

Fragment of an Aswan Orange slip ware plate, with a flange under the rim (slip also on the inside surface). The surface is burnished and has an inner decoration with geometrical elements (rouletted).

Dating: 6th-7th century AD.

Manqabad 207



Provenance: Survey Central Sector

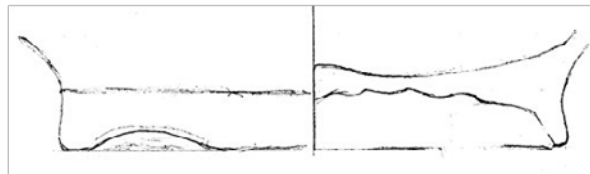
Inv. No: S63

Technical data: max Ø 5,5 cm, h max 2,5 cm, thickness 0,2 cm.

Bibliography: Bailey 1998 pl.120 C35; Egloff 1977 30; Czyzewska 2013 pl.132M53; Incordino 2020 p. 21 (**Manqabad 26**).

Small cup with raised base in fragmentary state of conservation, with stamped decoration on the inner surface (a circle with 9 dots, one in the center), wheel made, Nile orange clay very homogeneous, with mica. Burnished/red slip. Similar to other items from the HU8-11.

Manqabad 208



Provenance: Survey Central Sector

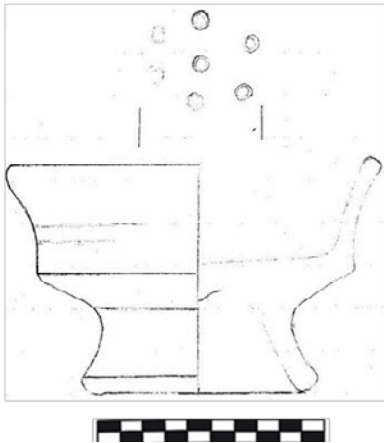
Inv. No: S64

Technical data: max h 2,3 cm, max Ø 9 cm.

Bibliography: Ballet et alii 2012 pl.3 n.32

Ring base of a raised cup or a dish in Nile clay (Aswan fabric). Black slip on the inner and outer surface. Possibly a waste of pottery production (?). Traces of fingermarks.

Manqabad 209



Provenance: Survey Central Sector

Inv. No: S65

Technical data: max Ø 8,1 cm, h max 5,3 cm, thickness 0,2 cm.

Bibliography: Bailey 1998 pl.120 C35; Egloff 1977 30; Czyzewska 2013 pl.132M53; Incordino 2020 p.21 (**Manqabad 20**).

Fragmentary small cup with raised base, straight rim preserved only in a little portion. Stamped decoration on the inner surface (a circle with 7 dots, one in the center), wheel made. Nile orange clay very homogeneous, with mica. Possibly cream slip. Similar to other items from the HU8-11 and to **Manqabad 207**.

Manqabad 210



Provenance: Dump Northern Sector

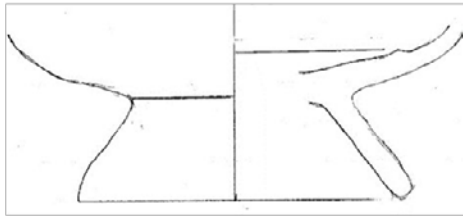
Inv. No: S66

Technical data: h 4,6 cm, max Ø 5,5 cm thickness 0,2 cm.

Bibliography: Bailey 1998 pl.120 C35; Egloff 1977 30; Czyzewska 2013 pl.132 M53; Incordino 2020 p.21 (**Manqabad 20**).

Fragmentary small cup with raised base, straight rim preserved only in a little portion. Stamped decoration on the inner surface (one circle), wheel made. Nile orange clay very homogeneous. Similar to other items from the HU8-11 (Northern Sector) and to **Manqabad 207, 208**.

Manqabad 211



Provenance: Survey Central Sector

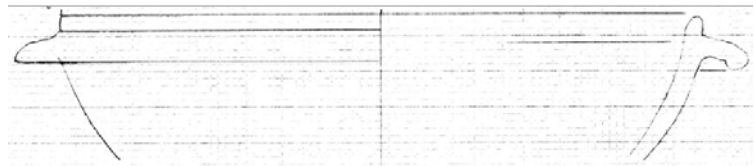
Inv. No: S67

Technical data: h max 3,8 cm, base Ø 8,5 cm
thickness 0,3 cm.

Bibliography: Bailey 1998 pl. 4 n. A176, pl.116 E402.

Fragmentary ARS (African Red Slip Ware) cup with raised base, very fine and homogeneous fabric.

Manqabad 212



Provenance: Dump Northern Sector

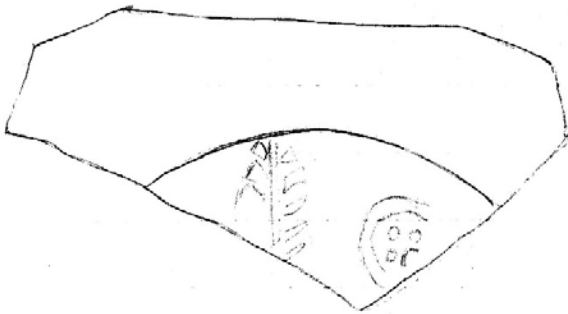
Inv. no: S68

Technical data: h 3,2 cm, max Ø 9,1 cm
thickness 0,4 cm, reconstructed Ø 18 cm.

Bibliography: Faiers 2005 fig. 2.3 n. 2

Fragment of an ARS (African Red Slip Ware) bowl with a flange under the straight and rounded rim. Base missing, burnished red slip.

Manqabad 213



Provenance: Southern Production Area

Inv. No: S69

Technical data: max length 7,8 cm, max wide 3,4 cm.

Bibliography: Donadoni 1974 tav. 28 n. 2, 3; Egloff 1977 pl. 11 n. 4, pl. 26 n. 2.

Fragmentary of an Aswan ERS (Egyptian Red Slip Ware) bowl with ring base, very fine and homogeneous fabric. Stamped decoration on the inner surface with vegetal motifs (leaves).

Manqabad 214



Provenance: Kiln Southern Area

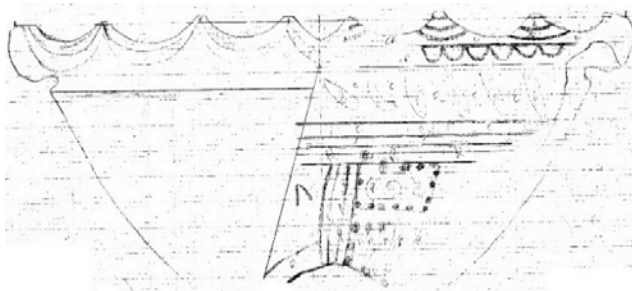
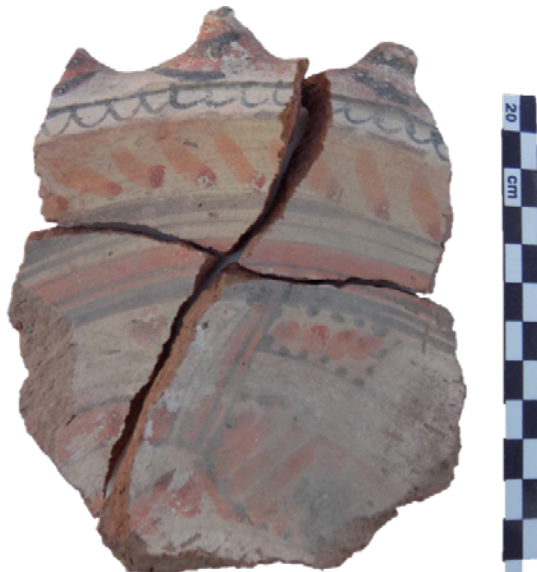
Inv. no: S70

Technical data: h max 6,5 cm, max wide 8,1 cm.

Bibliography: Faiers 2005 fig. 3.6 n. 40.

Fragmentary of an Aswan ERS (Egyptian Red Slip Ware) bowl with ring base, very fine and homogeneous fabric. Stamped decoration on the inner surface with vegetal (leaves) and geometrical motifs.

Manqabad 215



Provenance: Southern Production Area

Inv. No: S71

Technical data: max h 12,5 cm, max wide 9,8 cm, reconstructed Ø 24 cm.

Bibliography: Egloff type 261; Neyret 2008 E11756; Lecuyot/Bonnefois 2004 pl.2 n.24; Ballet et alii 2003 pl.8.3 n. 54; Incordino 2020 p. 36 (**Mnq 55**).

Four fragments of a large bowl, Nile clay, wavy rim and part of the upper body preserved. Painted decoration in black, cream and red on the inner surface with geometrical motifs (dots, lines). Similar to Louvre E11756 from Saqqara.

Manqabad 216



Provenance: Kiln Southern Area

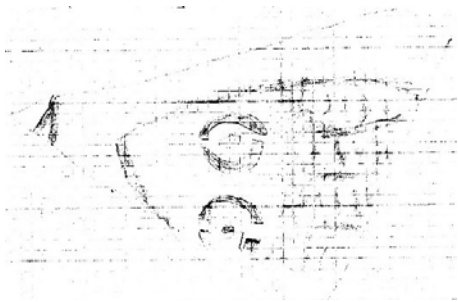
Inv. no: S72

Technical data: h max 6,5 cm, max wide 8,1 cm.

Bibliography: Faiers 2005 fig. 2.46 n.311

Fragment of a small flagon (?), hard orange fabric with an overall red/orange slip. Painted decoration in black and cream possibly to form the name 'Gabriel' (?).

Manqabad 217



Provenance: Southern Production Area

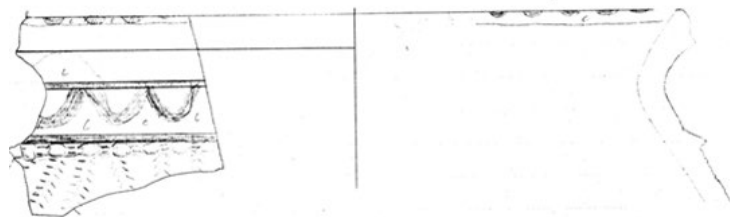
Inv. No: S73

Technical data: max h 7,9 cm, max wide 5 cm, thickness 1 cm.

Bibliography: Donadoni 1974 tav.50 n.20

Body fragment of a Nile clay bowl (?), with cream slip on the inner and outer surface and painted decoration in black of a fish.

Manqabad 218



Provenance: Kiln Southern Area

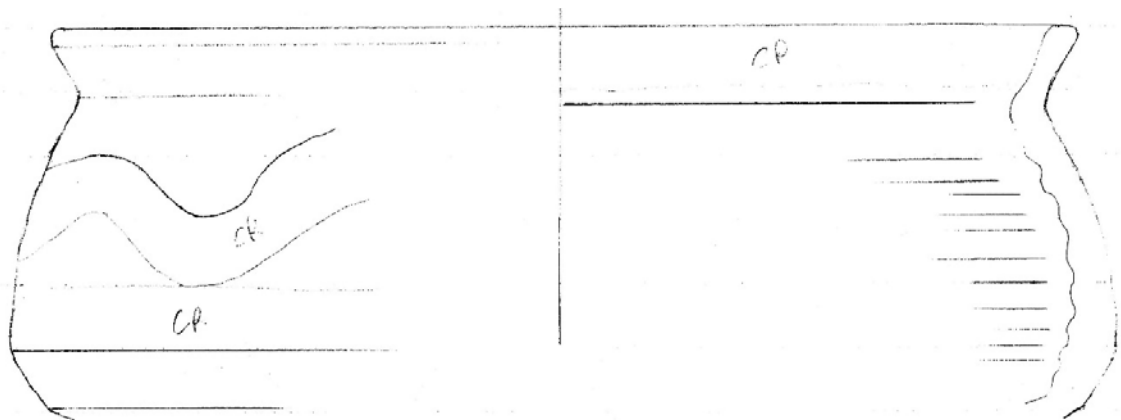
Inv. no: S74

Technical data: h max 6,5 cm, max wide 8,7 cm.

Bibliography: Egloff 1977 pl.78 n.3,7; Faiers 2005 fig. 2.23 n.180-182; Faiers 2013 fig. 2.31 n. 228, 231, 232.

Fragment of a jar with slightly everted rim, triangular in shape and carinated. Nile fabric with black core. Painted decoration on the neck and rim with geometrical motifs in black on cream background. Relief decoration on the body ('pie crust'), red slipped inside and outside.

Manqabad 219



Provenance: Southern Production Area

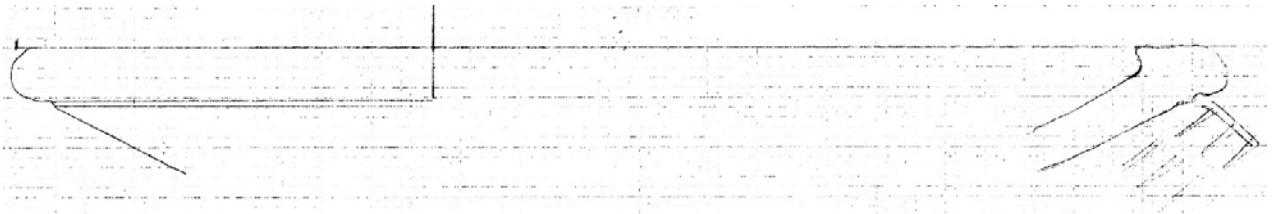
Inv. No: S75

Technical data: max h 8,7 cm, max width 8,4 cm, thickness 1,5 cm.

Bibliography: Bailey 1998 pl.18 C642; Winlock 1926 pl. XXIV (upper right); Incordino 2020 p. 75 (Manqabad 117); Faiers 2013 fig. 2.66 n. 408.

Two fragments of the body and upper part of a large pot in Nile clay with black core, rounded everted rim. Base, handles and lower half missing. Painted (?) decoration on the outer surface with wavy line/swag in cream on red background. Traces of cream also on the rim and under the carination. Quite similar to another item found during the surface survey of the Central Sector in 2020.

Manqabad 220



Provenance: Southern Production Area

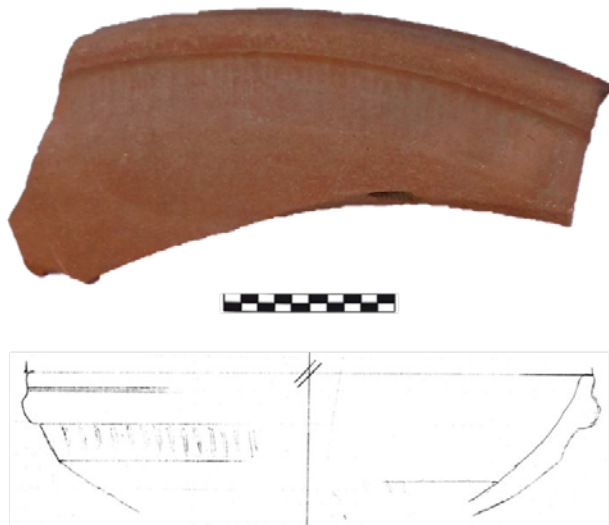
Inv. No: S76

Technical data: max h 4,7 cm, max width 13,4 cm, reconstructed \varnothing 34 cm, thickness 1,2 cm.

Bibliography: Egloff 1977 pl.39/3; Jacquet/Gordon 1972 pl.CCIV n.11; Wodzinska 2010 pl. 8.2; Gempeler 1992 taf.29.5 form T323a; Faiers 2005 pl. 68 n.17, 19; Rodziewicz 1976 figs. 27-31; Mackensen et alii 2006 fig. 10 n.6; Bailey 1998 pl.125 D327 bis; Incordino 2020 p. 27 (**Manqabad 44**).

Fragment of an Aswan Red Slip Ware large plate, with rounded rim and orange slip both outside and inside. Incised outer decoration just under the rim (rouletted) and incised line under the rim both outside then inside. Similar item found in HU 8-11 (Northern Sector).

Manqabad 221



Provenance: Southern Production Area

Inv. No: S77

Technical data: max h 4 cm, max wide 8,2 cm, thickness 0,6 cm.

Bibliography: Egloff 1977 pl.39/3; Jacquet/Gordon 1972 pl.CCIV n.11; Wodzinska 2010 pl. 8.2; Gempeler 1992 taf.29.5 form T323a; Faiers 2005 pl. 68 n.17, 19; Rodziewicz 1976 figs. 27-31; Mackensen et alii 2006 fig. 10 n.6; Bailey 1998 pl.125 D327 bis; Incordino 2020 p. 27.

Fragment of a Aswan Red Slip ware in Nile clay with rounded rim and a small fringe just under it. Base and lower half of the body missing. Incised outer decoration (rouletted) under the rim. Very similar to the precedent item (agg.num) and another one found in HU 8-11 (**Manqabad 44**).

Manqabad 222



Provenance: Southern Production Area

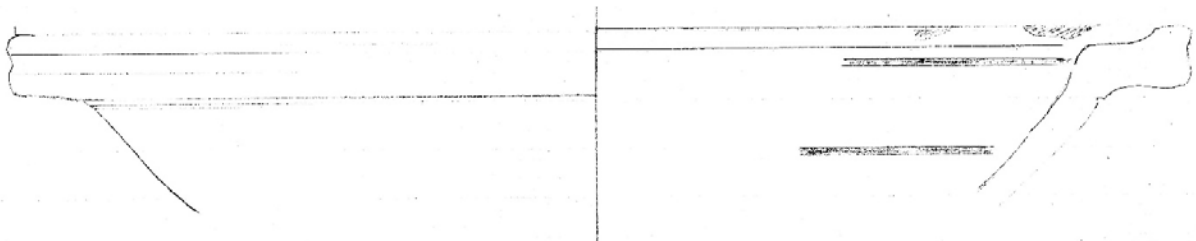
Inv. no: S78

Technical data: h max 6,3 cm, max wide 5,3 cm, reconstructed Ø 18 cm.

Bibliography: Faiers 2005 fig. 2.30 n. 222, fig. 2.21 n. 171.

Fragment of a carinated bowl in Nile clay, with everted rim, base missing. Painted decoration on the shoulder and neck in black on red background (geometrical motifs).

Manqabad 223



Provenance: Southern Production Area

Inv. No: S79

Technical data: max h 5,7 cm, max width 7,4 cm, reconstructed \varnothing 24,5 cm, thickness 0,8 cm.

Bibliography: Faiers 2005 fig. 2.7 n. 45; Incordino 2020 pl. IX (upper right).

Fragment of an Aswan Red Ware large bowl with cream slip both inside and outside. Everted, convex rim. Painted decoration in black and red on the inner surface with geometrical motifs (lines) on rim and neck. Very similar to fragments found among the collected material from the general survey of the site (see bibliography).

Manqabad 224



Provenance: Southern Production Area

Inv. No: S80

Technical data: max h 5,7 cm, max width 7,4 cm, reconstructed Ø 24,5 cm, thickness 0,8 cm.

Bibliography: Faiers 2005 fig. 2.8 n. 47

Fragment of an Aswan White Slip bowl of orange fabric, very fine, possibly slipped. Everted, triangular rim with carination. Body and base missing. No decoration.

Manqabad 225



Provenance: Southern Production Area

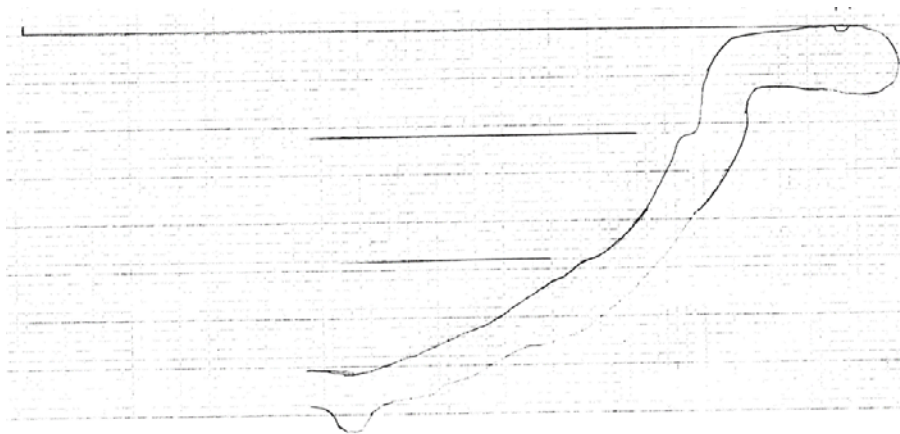
Inv. No: S81

Technical data: max length 5,8 cm, max h 3,7 cm,

Bibliography: Egloff 1977 l.39/3; Jacquet/Gordon 1972 pl.CCIV n.11; Wodzinska 2010 pl. 8.2; Gempeler 1992 taf.29.5 form T323a; Faiers 2005 pl. 68 n.17, 19; Rodziewicz 1976 figs. 27-31; Mackensen et alii 2006 fig. 10 n.6; Bailey 1998 pl.125 D327 bis; Incordino 2020 p. 27

Fragment of an Aswan made bowl, with straight rounded rim and a small flange under it. Orange/red slip on the inside and outside. Incised decoration (rouletted) on the outer rim. Quite similar to another item found in HU8-11 (Northern Sector, **Manqabad 44**) and some from the Southern Sector (**Manqabad 221**).

Manqabad 226



Provenance: HU 12N (Northern Sector)

Inv. No: S82

Technical data: max length 13,4 cm, max width 10,2 cm, thickness 0,4 cm.

Bibliography: Faiers 2005 fig. 2.12 n. 93

Fragment of a file bowl of Nile fabric, with flat and everted rim, possible ring base. Red slipped on the inside, with two carinated lines, highly burnished on the inside and on the rim, no traces of decoration left.

Amphorae, flagons, *miscellanea*.

Manqabad 227



Provenance: HU12 SY2

Inv. No: S83

Technical data: h max 10,5 cm, max width 7,8 cm.

Bibliography: Egloff 1977 typ.182-183; Majcherek 1995 pl.4 1A; Dixneuf 2011 pp. 129-133 figs. 113-116.

Body fragment of a Gaza/Palestinian amphora (LRA4) with ribbed outer surface.

Manqabad 228



Provenance: Dump of Northern Sector

Inv. No: S84

Technical data: max length 5,5 cm, max wide 3,5 cm.

Bibliography: no close parallels found so far

Small fragmentary lamp 'Qena ware', very fine Nile silt of grey/green color. Upper half missing, only one support/leg is preserved.

Manqabad 229



Provenance: Southern Production Area

Inv. No: S85

Technical data: h max 18,2 cm, max Ø 10,5 cm, thickness 0,4 cm.

Bibliography: Egloff 1977 type 204; Faiers 2013 fig.2.72 n. 446; Faiers 2005 fig. 2.46 n.311; Neyret 2008 AF7578, E12384, E15413; Bailey 1998 pl.49 J44; Guidotti 2004 p.146 n.287-288; Donadoni 1974 fig.24; Incordino 2020 p. 47 (**Manqabad 68**).

Fragmentary flagon (rim, neck and half body missing) of ovoid shape, ring base, wheel made. Possibly 2 handles (traces of one), red slipped outside, Nile clay with black core. Painted decoration on the upper half of the body with geometrical motifs (dots, lines), similar to items found in HU 11-14 (Northern Sector).

Manqabad 230



Provenance: Southern Production Area

Inv. No: S86

Technical data: max length 7,5 cm, max Ø 8,3

Bibliography: no close parallel found so far

Fragmentary flagon with high neck, missing rim, body and base missing. Nile orange clay, one bended handle starting from the shoulder. Relief decoration with geometrical motifs (lines) on the shoulders.

Manqabad 231



Provenance: Southern Production Area

Inv. No: S87

Technical data: h max 16,2 cm, max Ø 24 cm.
thickness 0,6 cm.

Bibliography: Egloff 1977 type 164; Dixneuf 2018 pp. 82-83; Incordino 2020 p.48 (**Mnq 70**)

Fragment of a large amphora (LRA1) with rounded rim and one banded handle starting from the shoulder.

Manqabad 232



Provenance: Southern Production Area

Inv. No: S88

Technical data: h max 16,2 cm, rim Ø 9,8 cm

Bibliography: Egloff 1977 typ.182-183; Majcherek 1995 pl.4 1A; Dixneuf 2011 pp. 129-133 figs. 113-116.

Fragment of a Palestinian/Gaza amphora LRA4 (upper half) with straight neck and rim, base missing. Ribbed outer surface of the body, starting from the shoulder.

Manqabad 233



Provenance: HU 2 N (eastern niche)

Inv. No: S89

Technical data: h 55,5 cm, rim Ø 24 cm, max Ø 38,2 cm, thickness 0,9 cm.

Bibliography: Egloff 1977 type 158/161(?); Neyret 2008 E27288, E10993; Faiers 2013 fig. 2.65 n. 406.

Large cylindric storage jar with two banded handles, everted triangular rim (fragmentary), ring base. Nile clay with black core, straight neck with carination, wheel made. Painted decoration on the shoulders with geometric motifs (lines, circles). The jar was completely sunk into the eastern niche of the housing unit in 2018, but in 2020 it has been found out of the niche, because of some probable illicit investigations carried out in the period between the two missions.

Manqabad 234



Provenance: Southern Production Area

Inv. No: S90

Technical data: h max 7,5 cm, max Ø 17,5cm, thickness 0,3 cm.

Bibliography: Egloff 1977 type 182-183; Majcherek 1995 pl.4 1A; Dixneuf 2011 pp. 129-133 figs 113-116.

Fragment of a Palestinian/Gaza amphora LRA4 (upper half) with straight neck and rim, base and lower half missing. Ribbed outer surface of the body, one handle starting from the shoulder.

Manqabad 235



Provenance: Southern Production Area

Inv. No: S91

Technical data: max length 7,2 cm, max width 5,3 cm.

Bibliography: Ballet et alii 2012 pl.105 n. 910

Flagon lid, or hoop handle to be attached separately.
Nile clay.

Manqabad 236



Provenance: Southern Production Area

Inv. No: S92

Technical data: max length 8,2 cm, max width 4,6 cm.

Bibliography: Faiers 2005 fig.2.54 n. 405.

Fragmentary lamp with one front hole and central oval depression, spout missing, flat base. Aswan fabric, burnt both inside and outside.

Manqabad 237



Provenance: Southern Production Area

Inv. No: S93

Technical data: max length 8,2 cm, max width 3,5 cm.

Bibliography: Winlock 1926 pl.XXXII A; Faiers 2005 Fig.2.54 n. 405; Incordino 2020 p. 49 (**Mnq 71**)
Donadoni 1972 tav.40 n.17.

Fragmentary carinated lamp (lower half, base, spout and handle missing), with one front hole and central depression decorated in relief (not clear). Traces of one handle, and burnt inside. Similar to a lamp found in HU 8-11 (Northern Sector).

Manqabad 238



Provenance: Kiln Southern Production Area

Inv. No: S94

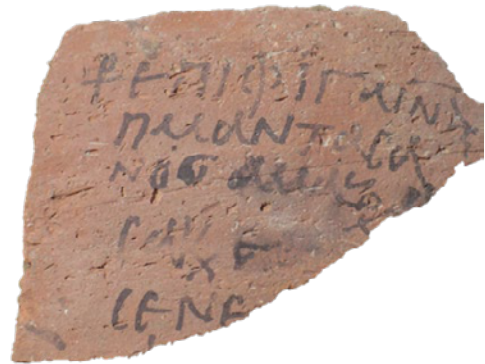
Technical data: max length 7,2 cm, max width 5,3 cm.

Bibliography: Winlock 1926 pl.XXXII A; Faiers 2005 Fig.2.54 n. 405; Incordino 2020 p. 49 (**Mnq 71**); Donadoni 1972 tav.40 n.17; Faiers 2013 fig. 2.86 n. 517.

Fragmentary carinated lamp (lower half and spout missing) with one front hole and central depression decorated with lines in relief. Preserved handle, possibly mold made. Aswan fabric (?) low relief decoration also on the body with geometrical motifs. Similar to a lamp found in HU8-11 (Northern Sector)

Manqabad 239

Manqabad 240



Provenance: Southern Production Area

Inv. No: S95

Technical data: max length 13,2 cm, max width 5,3 cm.

Bibliography: Winlock 1926 pl.XXXII A; Faiers 2005 Fig. 2.54 n. 410.

Lamp in good state of conservation, with a spout and a central hole in a depression, one banded handle. Relief decoration around the central hole (geometric motifs) and on the body.

Provenance: Kiln Southern Production Area

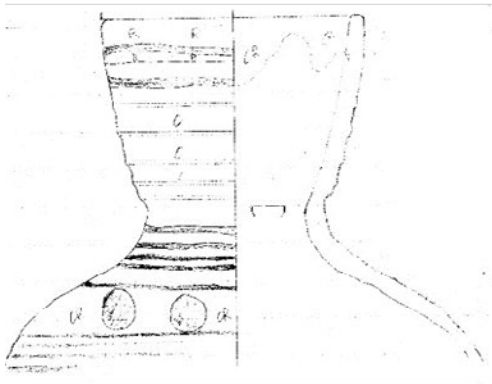
Inv. No: S96

Technical data: max length 9 cm, max width 7,5 cm.

Bibliography: Faiers 2005 fig. 5.1, 5.2, 5.3

Ostrakon with ink inscription in Coptic (the study of the text is currently in progress), body fragment of a possible large storage jar in Nile clay with black core.

Manqabad 241



Provenance: Southern Production Area

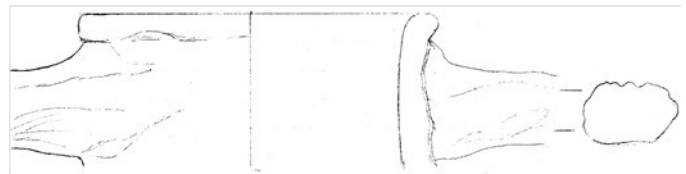
Inv. No: S97

Technical data: h max 11,8 cm, rim \varnothing 9,2 cm.
max width 6,3 cm.

Bibliography: Guidotti 2004 tav. LI n. 276

Fragmentary flagon with high neck (filter with 4 holes inside), straight rim, body and base missing. Nile clay, no traces of handles. Painted decoration in black on cream background with geometrical motifs (dots and lines) on neck and shoulders.

Manqabad 242



Provenance: HU12 SY2

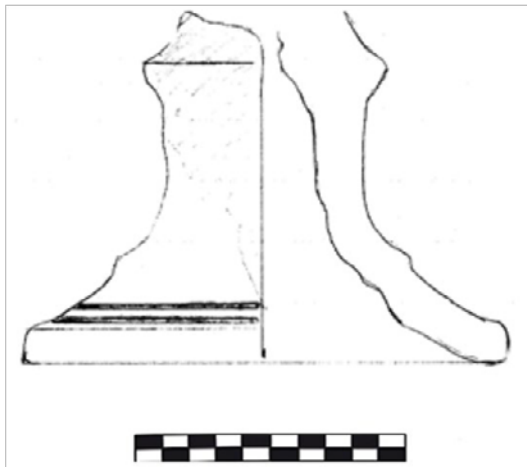
Inv. No: S98

Technical data: max h 10, max width
7,8 cm.

Bibliography: Egloff 1977 type 164; Dixneuf
2018 pp. 82-83; Incordino 2020 p.48 (Mnq 70)

Fragment of a large amphora (LRA1) with rounded rim and one banded handle. Small traces of resin on the inner surface (wine container?).

Manqabad 243



Provenance: HU 12

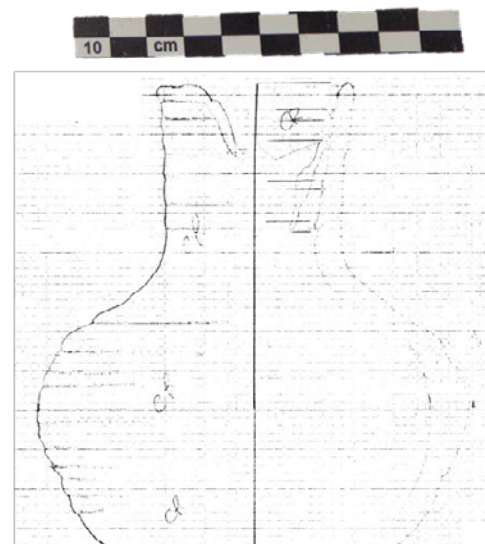
Inv. No: S99

Technical data: max h 3,9 cm, max Ø 4,3 cm.

Bibliography: Faiers 2005 fig. 2.53 n. 395

Fragmentary lid in Nile fabric M1, red slipped outside and inside. Painted decoration on the rim (black lines), traces of burnt. Top with a hole, half body missing.

Manqabad 244



Provenance: Southern Production Area

Inv. No: S100

Technical data: max h 11,5, max Ø 10,7 cm.

Bibliography: Egloff 1977 type 164; Dixneuf 2018 pp. 82-83.

Half of a small ovoid jug with ribbed body, tall neck and straight rim. Nile clay M1, cream slip, possibly with one handle originally.

Manqabad 245



Provenance: HU12 underground floor

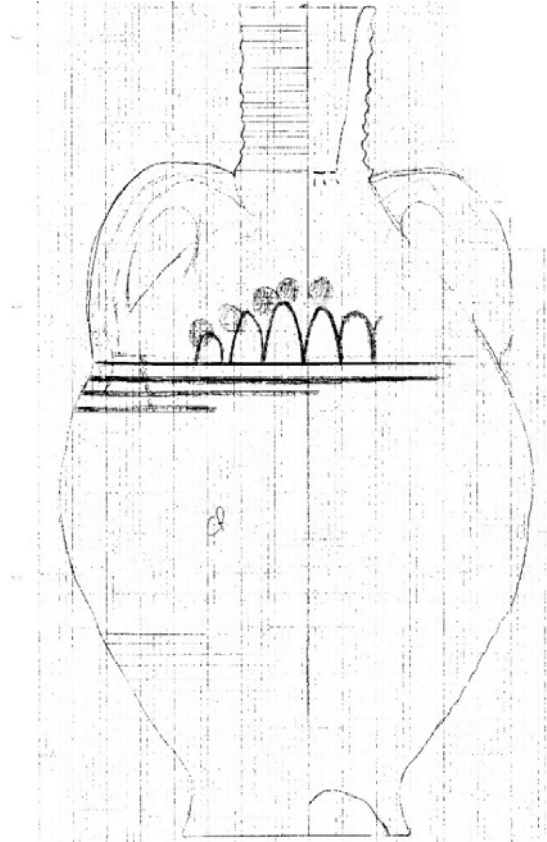
Inv. No: S101

Technical data: h max 12,2 cm, max width 6,2 cm, thickness 0,6 cm.

Bibliography: no close parallel found so far.

Fragment of an open mouth vessel, coarse hard fabric, bipartite black and red with voids. Black inner surface, rim and base missing. Painted decoration on cream base with orange/red and black colors, geometrical elements.

Manqabad 246



Provenance: Southern Production Area

Inv. No: S102

Technical data: h max 23 cm, max Ø 12,5 cm, thickness 0,6 cm.

Bibliography: Egloff 1977 type 204-205; Neyret 2008 AF7578, E12384, E15413; Bailey 1998 pl. 49 J44; Faiers 2005 fig.2.46 n.310; Incordino 2020 p. 43 (**Manqabad 63**).

Flagon with two handles starting from the shoulder, tall and ribbed neck with a filter (3 holes inside), straight rim, ring base, no spout. Nile clay, cream slip and painted decoration in black and brown on the shoulder with geometrical motifs (dots, lines). Very similar to other items found in HU19-21 (Northern Sector).

Manqabad 247



Provenance: HU12-S2

Inv. No: S103

Technical data: h max 3,7 cm, max Ø 6,2 cm, thickness 0,4 cm.

Bibliography: no close parallel found so far.

Oil burner (lamp?) in fragmentary state of conservation (half is missing), and three holes on top made before firing (possibly 6 originally). Top applied separately, wheel traces, possibly Aswan made. Orange slip, burnished outside, burning traces outside. Very similar to another one from the warehouse (Manqabad 154).

Chapter Two.

Pottery types from Manqabad monastery.

The documentation conducted in 2019 at the warehouse of el-Ashmunein, together with the survey of the Central and Southern Sector of the site accomplished in 2020, have largely widened the range of pottery typologies which can be ascribed to the Manqabad assemblage. The items analyzed in the warehouse in particular, led to suggest some interpretative hypothesis regarding the monastic complex, and its relevance more in general, since the 88% of the documented vessels from the Central Sector area, excavated by the Egyptian inspectors from the 1985 to 2003.

2.1 Analysis of the pottery typologies: coarse wares

As regards *coarse wares*, there was a more general attention to the documentation of these types, which usually have been kept in the el-Ashmunein store only if complete by the previous Egyptian excavations at the site. Of course, during the survey of the Central and Southern Sector, it has been possible to collect more fragments of relevant typologies, raising their total number up to the 24% of all the documented items in the current catalogue. Among them, a noticeable number of lids have been recorded mostly from the survey of the site (21% of the coarse wares), both conical than rectangular in shape, often in fragmentary state of conservation. The diameter size may vary, thus attesting a wide range of containers to be covered up. Some comparisons could be found among the pottery assemblages of Kellia¹, Tebtynis², Antinoopolis³, Deir el-Bachit⁴, and Kom el-Nana⁵, as usually part of the cooking and food consumption set. One of Manqabad lids in particular (**Manqabad 191**) represents actually a waste of pottery production, clear evidence of this kind of crafting activity performed at Manqabad (see Chapter Three). As regards cooking wares, several pots with burnt surfaces have been documented, one complete item included (**Manqabad 133**) possibly comparable

¹ Egloff 1977 pl.55 n. 3,4.

² Ballet, Poludnikiewicz 2012 p.342 n.894.

³ Guidotti, Pesi 2004, Tav.1 n.1.

⁴ Beckh 2013 taf.57 Typ 168:ZN04/2-39.

⁵ Faires 2005 p.156 n.393, 403.

to similar material from Kom el-Nana⁶ and el-Ashmunein⁷. One complete ladle (**Manqabad 129**) may find correspondence in items from a quite well dated context at Kom el-Nana⁸, while a hoop handle (or possible flagon lid, **Manqabad 235**) can be compared to similar objects deriving from Tebtynis⁹. Several large storage jars have been found among the material stored at el-Ashmunein: it is possible to mention a peculiar example (**Manqabad 145**) with numerous holes pierced in the walls of the body. This pattern has been noticed also in some items from Tod¹⁰ today kept at the Louvre Museum (E27228), whose function is, however, still debated (possibly related to fermentation? Production of cheese?). The majority of the jars from Manqabad bears, instead, a painted decoration on the upper part of the body, as usual for this typology, which can be spotted among the assemblages of several monastic sites of Late Antique Egypt (Saqqara, Tod, Esna, Qurna, Armant), with a wide range of dating (second half of the 5th-7th centuries AD). In some instances, the decorative motifs are arranged in a complex pattern on different registers, displaying vegetal, geometric and figurative themes. Among them, it can be noticed the repetition of a specific image of a bejewelled lady, already found on a painted cup with raised base (**Manqabad 56**) documented in the al-Ashmunein warehouse in 2014¹¹, deriving from the Northern Sector of the site. The identification of the figure is still unclear¹², but it seems related somehow to the religious activity performed specifically at Manqabad, since no parallel of this representation have been found elsewhere so far. A remarkable significance could be attributed also to some small carinated cups with almost no decoration produced as coarse as well as fine wares, which occur again both in the el-Ashmunein store and on the site (**Manqabad 121, 122, 123, 127, 207, 209, 210**) in hundreds of fragments and complete items. This type has, in fact, already been noticed during the 2014 and 2018 work seasons, and possibly identified as water container¹³. Since not many parallels of this typology have been found, the suggestion that this typology could be produced locally has been put forward, also considering the distribution of this findings all over the site. Moreover, it has been possible to identify two different typologies of manufacture for this class: one coarser,

⁶ Faires 2005 p. 118 n. 220.

⁷ Bailey 1998 pl.110 E30.

⁸ Faires 2005 p. 164 n.429.

⁹ Ballet, Poludnikiewicz 2012 p.343 n. 910.

¹⁰ Pierrat/Bonnefois 2004 p. 164, pl. 6; <https://corpus.louvre.fr/s/catalogue-des-ceramiques-coptes-du-musee-du-louvre-base-clemence-neyret/item/14801>

¹¹ Incordino 2020 p.37.

¹² Incordino 2019 SAK pp.107-116.

¹³ Incordino 2020 pp.78-79.



Large storage jars from Manqabad with the 'bejewelled lady' decorative motif (upper row from left to right: **Manqabad 168, 169, 170**, fragment **Manqabad 138**).

with no slip nor decoration of any kind, really scattered all over the site; and a second finer type, with stamped decoration on the inner base. About 15 bowls with raised foot and this kind of stamped decoration have already been documented in the el-Ashmunein store in 2014, derived from the Egyptian excavation of the Northern Sector¹⁴. The pattern of this decorative motif seems not to have close

¹⁴ Incordino 2020 pp. 21-24 (**Manqabad 25-39**).



Small carinated cups (up: coarser type; down: finer and decorated type).

parallels among the most frequent themes occurring on Late Antique pottery from Egypt: a group of small dots located around a central circle, varying in number from 1 to 13. Therefore, also this element could be considered as an additional evidence for a local production, with a possible meaning as manufacturing marks (?). Moreover, other interesting types have been documented in the el-Ashmunein warehouse, such as an almost complete compartment dishes with 7 sections, possibly made in Aswan (**Manqabad 187**). The function of this peculiar vessels is still matter of debate: according to

some items found in a domestic context in Antinoopolis dated to the 6th-7th century AD, the religious use seems to be unlikely, also considering the lack of any sacred decoration. Therefore, their function as object of everyday life has been suggested, possibly related to the presentation of food during liturgical festivals¹⁵. Finally, a peculiar item has been documented in el-Ashmunein: a complete and decorated multi-support for amphorae, in a good state of conservation (**Manqabad 173**), which usually is quite rare to find among similar assemblages. In fact, numerous comparisons found so far are with stone supports for vessels, which can be sunk into the floor of service rooms/kitchen. The item from Manqabad may have hold three amphorae, if considering the number of the main holes (the biggest is in the middle). In addition to that, the presence of a spout in the centre may possibly indicate a function as support for pierced jars (such as for instance **Manqabad 145**), made to contain organic material which need to ferment (milk, wine?), or more simply, a spout for water trickled down the containers. According to another suggestion, a similar item (dated to the 5th - 6th century AD) found among the material deriving from the site of Medamud may have been used as a stove¹⁶. Interesting is the finding of miniature of supports for jars (dated to the 7th -8th century AD), again from the same site, whose function, or possible symbolic value, is still unknown.



Example of compartment dish from Tod (Louvre E27224).

¹⁵ Guidotti 2004 pp. 54-55.

¹⁶ <https://corpus.louvre.fr/s/catalogue-des-ceramiques-coptes-du-musee-du-louvre-base-clemence-neyret/item/14932>



Support for amphorae/jars from Medamud (Louvre 12997, top)
and a miniature from the same site (Louvre 15415, down).

2.2 Fine wares

An important class of material found at the site during the 2020 work season is the ARS (African Red Slip), collected in several fragments during the surveys and surface collections of the Central and Southern Sector (**Manqabad 211, 212**). In fact, the presence of this type attested at Manqabad represents a relevant evidence of a long distance trade exchange of items between the monastery and the western Mediterranean area in particular, or, at least, the inclusion of Manqabad in an indirect trade system with this region.



Fragments of ARS found at Naukratis (left, BM1888,0601.689) and at Manqabad (left).

Similar conclusions could be drawn as a result of the analysis of the fabrics of some ERS (Egyptian Red Slip) wares made in Aswan, found both at the site and in the el-Ashmunein warehouse (ca. 20 items; **Manqabad 198, 205, 206, 208, 213, 214**, etc.), even if the products from this very important atelier can actually be found in the majority of the Late Antique pottery assemblages of Egypt. Clearly deriving from an imitation of *African sigillata* are the ERS ware fragments with incised decoration (**Manqabad 213, 214**) found in the Southern Production area. This decorative pattern is very common, the most relevant comparison comes from the necropolis of Antinoopolis, outside the city wall, dated to the 5th-6th century AD. Among the fine decorated bowls, a particular mention should be made for the large item found in the Central Sector of the site during the 1991 investigation (**Manqabad 134**), which bears a polychrome painted decoration on the inner surface, quite similar to another bowl documented during the 2014 mission at el-Ashmunein¹⁷. The latter was probably produced at Aswan, while the former may have been crafted at the site imitating that model, also in the choice of decorative motifs (birds) included in vertical registers. During the documentation of the el-Ashmunein stored items it could be possible to observe another interesting typology of Egyptian Red Slip ware bowls, with a characteristic ‘rouletting’ decoration, also identified in 2014¹⁸. These items are all fragments

¹⁷ Incordino 2020 p. 32 n. 49.

¹⁸ Incordino 2020 pp. 27, 28, 34 (**Manqabad 43, 44, 45, 52**).



Fragment of ERS found at Medamud (Louvre AF4988).



Large painted bowls from Manqabad with similar decorative pattern.

(**Manqabad 220, 221, 225**) deriving from different sectors of the site (Northern, Southern) and share several elements with the assemblages from Kellia, el-Ashmunein, Amarna (Kom el-Nana), Qubbet el-Hawa, Esna, Elephantine, Alexandria and Nag el-Hagar. Usually in the Manqabad examples, the rouletting motif is incised all over the external surface of the bowls (rim included), which often bear also a projecting small flange just below the rim (three instances out of four). This decoration is characteristic of O Group wares (Rodziewicz types O3-4, 22a, 24)¹⁹. Parallels from Kom el-Nana are dated between the second half of the 6th to the first half of the 7th century AD²⁰, while some comparisons

¹⁹ Rodziewicz 1976, p. 56.

²⁰ Faiers 2005 p. 69.

from Qubbet el-Hawa indicate this type of ERS fine ware as part of the liturgical and ritual ceramics, possibly produced in Aswan because of the peculiar orange-pink fabric²¹, which can be attribute also to the Manqabad items.

An additional evidence for medium/long distance trade involving the monastery of Manqabad is represented by some decorated fragments found again in the Central Sector of the site in 1991 (**Manqabad 139, 140**, and possibly also **164**), which may be identified as part of a ‘Saqqara jar’, a typical production of the St. Jeremiah monastery in Lower Egypt. This hypothesis lays mainly on some elements of the decorative pattern, very peculiar of this type, such as the choice of figurative themes (animals) and the filling of every available space (*horror vacui*). A similar item from the Louvre Museum (E14213)



Saqqara jar from Apa Jeremiah monastery (left) and a fragment from Manqabad (right).

of unknown provenance gives an idea of its possible chronological range, i.e. 5th-7th century AD²². Particularly interesting is the documentation of two peculiar pottery types found among the assemblage currently kept at the el-Ashmunein warehouses: the animal-shaped vessels and the terracotta female figurines, deriving from the Central Sector of the site. The animal-shaped vessels are two (**Manqabad 180, 181**), and have quite unmodelled bodies, where the peculiar animal details were

²¹ Colmenero 2017 pp. 98, 101.

²² <https://collections.louvre.fr/en/ark:/53355/cl010042279>

simply painted, added or incised. The first item belonging to this type from Manqabad is a fish-shaped incomplete ovoid vase, with tail and fins (partially broken) modelled in raised relief and applied separately. The original spout could have been located in the mouth of the fish, since the only opening is actually in the fore part of the vessel, while the rear section of the tail is closed. It could be probably identified as a 'boliti' fish (*Tilapia Nilotica*), usually associated with fecundity and rebirth, since their renowned high rate of fertility and habit to incubate the eggs in the mouth of the female, until they are expelled as young fish²³. Few parallels from Late Antique context could be found so far²⁴, the most interesting of which comes from the site of Deir el-Bachit (West Thebes)²⁵. The second item from Manqabad is a pig/sow shaped incomplete vessel made of Nile clay, covered in a red slip. A hole on the front section of the vase could represent a spout, and/or the junction point for the head of the animal, to be added separately. The neck of the vessel is to be located on the back of the animal, where are still visible five holes of the strainer, with the addition of a handle on the rear side, directly attached to the neck. Starting from the Third Intermediate Period, several amulets of sows, walking alone or with up to seven piglets marching between their legs, have been found in burials, probably intended to symbolize fertility²⁶. It's noteworthy that the context of finding of animal-shaped or animal vases is usually and constantly funerary (tombs), while only the rare case of Deir el-Bachit fish-vase could be comparable to the Manqabad items, since it derives from a monastic settlement too. As regards the possible function of these animal-shaped vessels among the ceramic material from Manqabad, a common feature that could relate pigs and fishes as symbols is certainly fertility: they were, in fact, usually both associated to a highly productive rate and life-giving power, one of the most relevant element in the traditional

²³ Bourriau 1981, pp. 31-32.

²⁴ See the fish ampulla from Edfu today kept at the Museum für Byzantinische Kunst in Berlin (following picture).

²⁵ Beckh 2013, pp. 50, taf.66.

²⁶ Andrews 1994, 35.



Fish ampulla from Edfu (Museum für Byzantinische Kunst Berlin n. 6002).

Egyptian religion. But why symbols of fertility would be used to decorate vessels of a monastic community in Late Antique Egypt? In order to try to answer this question, we have to consider several archaeological, epigraphic and architectural elements recently found at Manqabad, which changed radically the original interpretation of the site, to whom a paragraph of the following chapter has been dedicated²⁷. Another interesting typology documented at the el-Ashmunein warehouse is represented by some terracotta female figurines deriving from the Central Sector of Manqabad site (**Manqabad 182, 183**). The occurrence of this type of archeological material is not so frequent to find among the assemblage of monastic communities of Late Antique Egypt, with few noteworthy exceptions, such as the Abu Mena sanctuary, Antinoopolis and Kharga sites²⁸. Moreover, the production of this figurines seems to be characterized by quite distinct regional variability during the Christian Era in Egypt, even if female terracotta figurines have been crafted since Predynastic Period. Of course, the function and use of these items should have changed through the centuries, and have to fit somehow within the new religious frame of Christianity²⁹. In fact, the female figurines produced during Late Antique period are usually depicted dressed, in contrast with the usual pattern of nudity quite spread during the previous times. Many scholars have suggested different interpretative hypothesis so far about their function and use, such as, for example, votive objects, or pilgrimage souvenir, not ruling out the possibility of multi-

²⁷ See 3.4 paragraph on the next Chapter 3.

²⁸ Incordino 2022 pp. 7-13.

²⁹ Frankfurter 2015 p.201.

function or reuse³⁰. In particular, the interpretation of the figurines found at Manqabad could be possibly related to the link between this objects and the idea of fertility, as often suggested for this class of material, mainly because of the constant emphasis on the womb, the occasional presence of children³¹, and the association between this objects and some important religious figures related to fertility and childbirth (such as Abu Mena) in Late Antique Egypt. As some indicators seem to point out, the performing of peculiar rituals at Manqabad monastery as purification, healing, baptism and perhaps also pilgrimage towards a holy place, could be suggested, explaining also a possible use/function of these figurines. The finding of this items in the Central Sector of the site is another indicator of a possible ritual use, since it is related to a peculiar building of Manqabad: a large bath-like complex of extraordinary dimensions, maybe intended for pilgrims such as in the well known case of the Abu Mena shrine³². Considering the previous observations and the present state of our knowledge, only further investigation at the site, planned for the forthcoming season work, would add more data to confirm or reject this hypothesis.



Terracotta female figurines from Kharga Oasis (left) and from Antinoopolis (right).

³⁰ Wilson 2018-2019 p. 120.

³¹ Stafford 2019 p. 32.

³² As regards this hypothesis see paragraph 3.4 of the following Chapter 3.

2.3 Amphorae and lamps.

Among the amphorae fragments documented during the survey at the Southern Sector of the monastery of Manqabad in 2020, some interesting items can be ascribed to the LRA4 typology, corresponding to the so-called Gaza or Palestinian amphorae (**Manqabad 232, 234**), whose origin of production has been confirmed by petrographic analyses. This class has been divided into four different variants, which, compared with the fragments from Manqabad, could serve as a referent point for dating. The most striking parallel for **Manqabad 234** fragment seems to belong to the Form 3 variant, a relatively tall and slender amphora, with a rim diameter of 10-12 cm. and a reduced capacity. This variant may be considered an earlier morphological class, which appears not before the 5th century AD³³. The fragment **Manqabad 232**, instead, may be associated with the Form 1 variant, a more bulging amphora close to the shape of the traditional bag shaped Palestinian vessels. This type is less frequent to find among the assemblages of Late Antique Egypt (Kom el-Dikka), and could be possibly dated to the



LRA4 Form 1 from Marina el-Alamein.

³³ Majcherek 1995, p. 168.

1st-4th century AD. These fragments found at Manqabad represent another relevant element supporting the presence of a long-distance trade between the monastery and the Mediterranean region.

Largely represented is the LRA1 typology of amphorae, found both in fragments and complete items in the Northern, Central and Southern sectors of the Manqabad monastery (**Manqabad 150, 156, 231, 242**) during the 2020 survey, but also in the precedent work seasons³⁴. This type, probably in origin imitation of Aegean and Siro-Palestinian prototypes already produced in Egypt from the Hellenistic period³⁵, has many parallels among the assemblages of Kellia, Buto, Tebtynis and Dendara, representing one of the most frequent find of the Late Antique pottery assemblages of Egypt. The first major exports of the more recognised type manufactured in Cilicia and Cyprus range from the mid to late 4th century AD, to the half of the 7th century AD (Alexandria)³⁶, with a more cylindrical body, a rounded, plain base, cylindrical neck and large and thick handles. Moreover, LRA 1 is often found bearing *titoli picti* in Greek or with Christian theme on the shoulders, such as on the complete item documented in the el-Ashmunein warehouse in 2014 (**Manqabad 70**), deriving from the Northern Sector of the site³⁷.

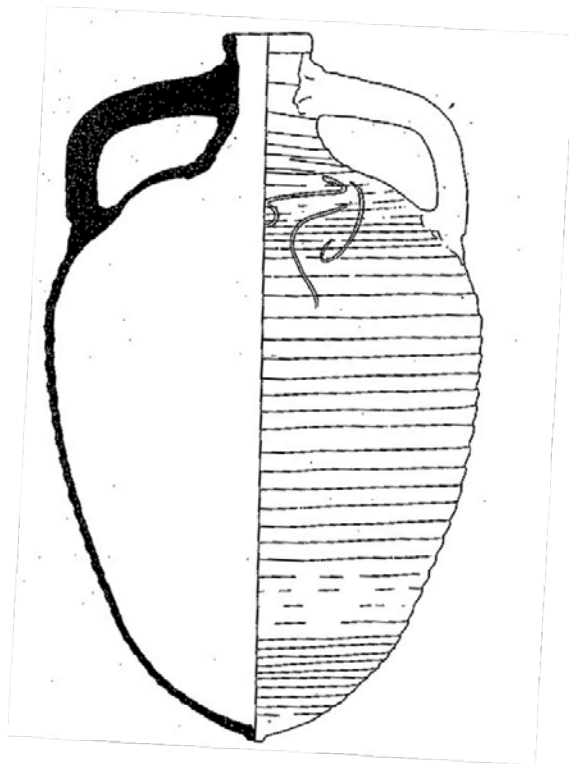
³⁴ Incordino 2020, **Manqabad 57, 62, 70, 110, 116**) pp. 38, 42, 48, 70, 75.

³⁵ Dixneuf 2011 p. 80.

³⁶ See online the Roman Amphorae: a digital resource site:

https://archaeologydataservice.ac.uk/archives/view/amphora_ahrb_2005/details.cfm?id=236&CFID=63f9a2c7-af94-4ff1-aa62-914e148b4853&CFTOKEN=0

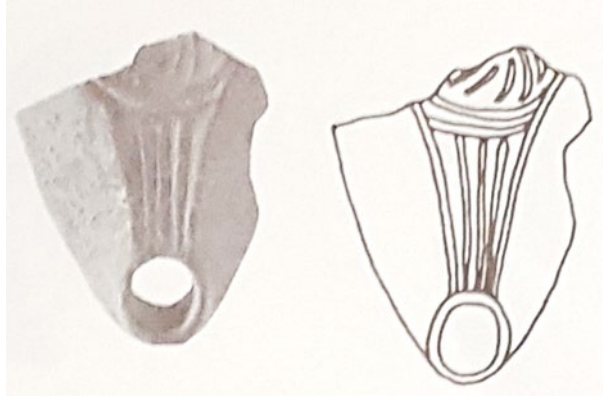
³⁷ Incordino 2020, p. 48.



LRA1 with a *titolo picto* from Kellia.

As regards lamps, more complete and decorated items have been documented during the 2019 campaign among the material currently kept at the el-Ashmunein warehouse, but also as result of the surveys of the Central and Southern Sector of the site (**Manqabad 176, 178, 179, 228, 236, 237, 238, 239, 247**). Among them, three lamps bear no decoration and are incomplete/fragmentary, while six of them are in a good state of conservation (intact or almost complete items) and are decorated with geometrical (**Manqabad 237, 238, 239**) or figurative motifs (**Manqabad 176, 178, 179**) on the top surface. The geometrical motifs are mostly sunburst lines, or a cross in one instance (**Manqabad 176**), while the figurative repertoire show depictions of (possibly) saints (**Manqabad 178, 179**) also riding a horse in one case³⁸. The parallels found so far belong to the assemblages of el-Ashmunein, Kellia,

³⁸ Almost no parallels have been found so far for this kind of figurative relief on Late Antique lamps from Egypt.



Lamp from el-Ashmunein quite similar to the **Manqabad 239** lamp.



Lamp from Faras (British Museum EA51757) with decorative motif of crosses (see **Manqabad 176**).

Amarna Kom el-Nana, Thebes and Faras (Nubia) and could be dated to the 8th -9th century AD³⁹, but are all related to the items bearing geometrical or no decoration. From the data collected during the documentation of this 130 pottery items from Manqabad can be drawn several observations, firstly regarding the wider range of types identified, often linked to a large-distance trade/exchange system (ARS, LRA1 and 4 in particular), but also including more domestic and coarse wares, deriving from the numerous surveys conducted at the site in 2020. As regards the general chronological range of these typologies, it does not differ substantially from the indication provided by the 2014 and 2018 work

³⁹ Bailey 1998, p.108 X171.

seasons, and therefore can be confirmed between the end of the 5th- 8th century AD, with a major concentration of types from the 6th to the 7th century AD. Of course this dating is still not entirely representative of the whole assemblage, since the investigation on the site and the documentation work have yet to be completed, but the rising numbers of recorded items, now around 250 units, is definitely shaping a more complete and nuanced framework of the Manqabad repertoire. Finally, the most relevant information which the actual collection of data may offer is related to the possible local production of pottery types (already suggested during the brief surveys of the Southern Sector conducted in 2018), which will be discussed in details in the following chapter.

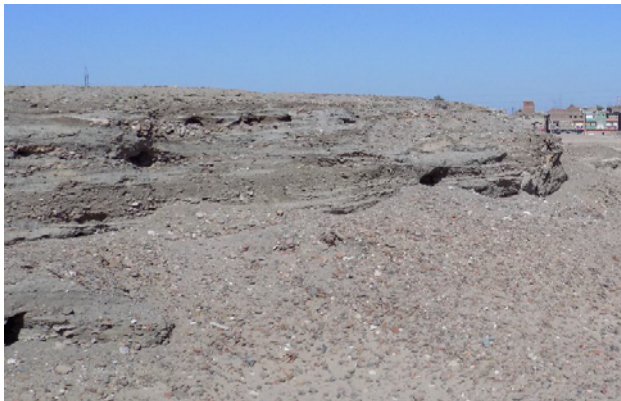
Chapter Three.

The Survey of the Production Area.

During the 2020 field mission, a survey of the southern area of the site was started, with the aim to investigate a possible production area, whose presence has been suggested by the findings of the 2018 mission. A very preliminary survey of the area conducted in 2018, in fact, had as result the discovery of some unusual ‘dump’ structures, made not only by pottery sherds, but also by several remains of burnt mudbricks and ashes, which could support the hypothesis of a production sector at Manqabad.

3.1 The Investigation of the Southern Sector.

During the previous campaigns/fieldworks, the archaeological evidence and the collection of several fragments of burnt ceramics and bricks mixed with ash suggested the idea of a production area at the southern sector of the site¹. In order to confirm or reject this hypothesis, a survey and cleaning activities in the so-called “dump area” began on February 2020. Three trench pits (Tp1, Tp2, Tp3) were opened at



Unusual formation of ‘dumps’ in the Southern Sector of the site.

¹ Pirelli 2018 pp. 305-350.

the eastern end of what, at first glance, looked like an enormous dump structure (kiln/s?), to better investigate its nature and function. The first square trench pit (Tp1) of 4×4m was opened in the top of this structure, revealing a complex stratigraphy made up of five different layers of deposits, often mixed by natural atmospheric agents. In order to identify the extension and nature of each layer, the trench pit was enlarged (5×10m). Clearly visible also in the vertical section on the eastern side of the structure, these layers can be summed up as follows: the first was made up of soil mixed with a huge number of pottery sherds, some whole pots, charcoal, and a great quantity of burnt bricks; the second, thinner than the first, was made up of pottery sherds mixed with light ash-coloured sand; the third looked like the second one, except for the presence of yellow sand mixed with vegetable fibres, limestone and flints; the fourth was made up of yellow sand mixed with of potssherds and vegetable fibres. The fifth layer showed more or less the same composition as the previous one but was darker in colour. These layers were probably the top coating of a multi-vaulted building (kiln?), therefore the work on Tp1 was stopped and a second trench pit (Tp2) of 5×5m was opened at the base of the structure. Cleaning revealed the presence of 5 openings on the eastern façade of the dump. A mud-brick wall ran from the inside of the southernmost opening - where it serves as a base for a vaulted brick roof - to the outside of the structure. With a total length of 8.42m, it consists of 5 rows of mud bricks whose sizes are approximately 29×14cm. On its eastern edge, the wall meets at right angles another mud-brick wall 2.54m long. This second wall runs from the façade of another structure similar to the former one and located just in front of it. A third trench pit (Tp3) was opened here. No openings have been found so far, but the stratigraphy - made up of unbroken and fragmentary mud bricks and baked bricks, complete amphorae, potsherds, mats, ashes and charcoal - revealed the same layers seen in the Tp2 structure. This suggests that the two buildings worked together as a single system. This brief archaeological and topographical survey of the area suggests that the main structure could have been related to at least 4 or 5 smaller similar structures, maybe connected to one another by mud-brick walls. The finding of some wastes of pottery production in the area around the trench pits definitely confirms the existence of a pottery manufacturing area at Manqabad (Catalogue in Chapter One: **Manqabad 191, 192**). The analysis of this complex structure is currently continuing; therefore, any conclusion could only be preliminary and, hopefully, confirmed only by a complete excavation of the area to be conducted in the coming years.



Trench TP1 opened on top of the 'dump' structure.



Trenches TP1, TP2 and TP3 revealing a possible kiln-like structure.

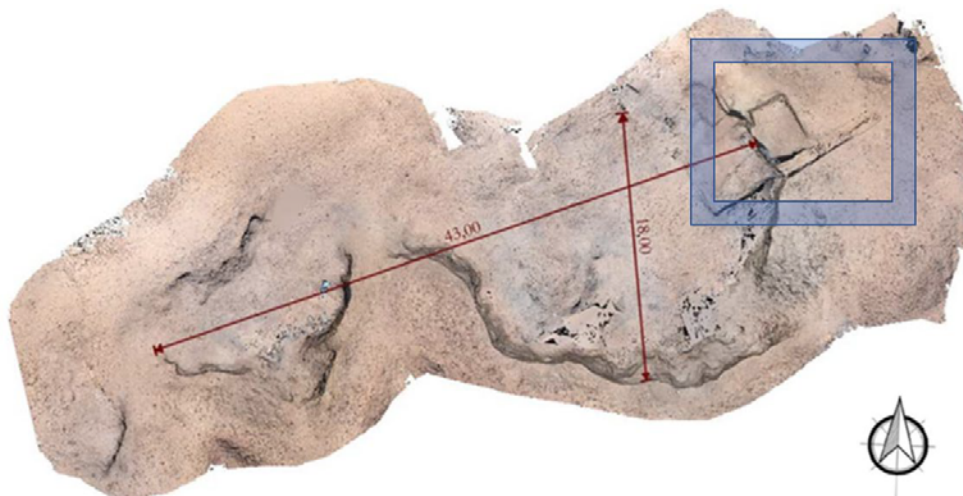
3.2 The furnace of Manqabad.

As a consequence of the investigation of the trench pits in the Southern Sector, a peculiar structure emerges from the sand and debris: a possible furnace with five openings on the eastern side (ca. 5,30 m long). The southernmost opening is occupied by a mudbrick wall, which starts from inside the kiln and goes outside for a total length of 8.42 cm. This wall links the furnace with a second structure located just in front of the first one, thus creating an open courtyard. A brief analysis of the inner structure reveals that the kiln has a vaulted roof and it is probably divided into at least three major chambers, at different levels. Notwithstanding the impossibility so far to conduct a proper archaeological investigation of the kiln, and in order to better understand the characteristic of this building, a brief inner survey was conducted, soon followed by a photogrammetric survey carried out by GoPro, mounting the sensor on a pole with a height ranging from 1.5 to 3.0m. The device was set in sequential shooting mode with image acquisition every 2 seconds. Each area was processed by following a carefully established workflow. The images were automatically oriented in a state-of-the-art SfM software application and the photogrammetric models (dense cloud and mesh) were scaled using a known

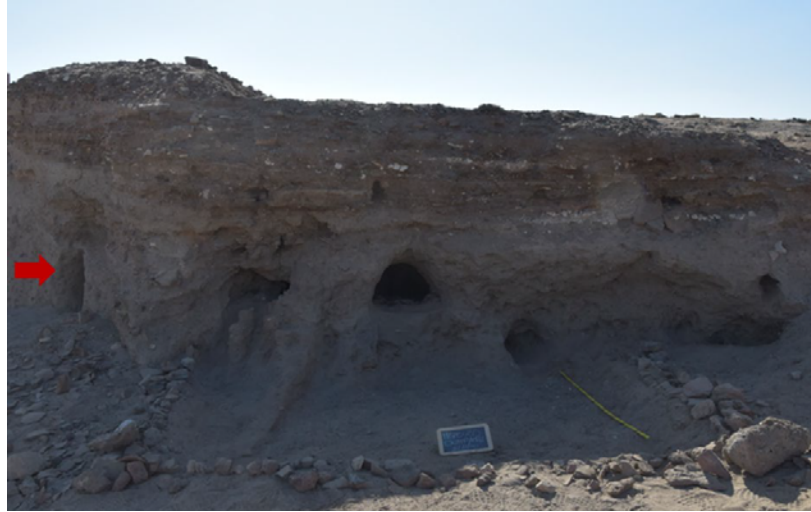
distance thanks to the topographical grid. Moreover, some CPs (Control Points) were positioned and measures by total station to allow the geo-referencing of the final models. One of the first results deriving



Southern mudbrick wall starting from the inside of the kiln (first and second openings; left picture) and a second vaulted chamber of the furnace, seen from the second opening (right picture).

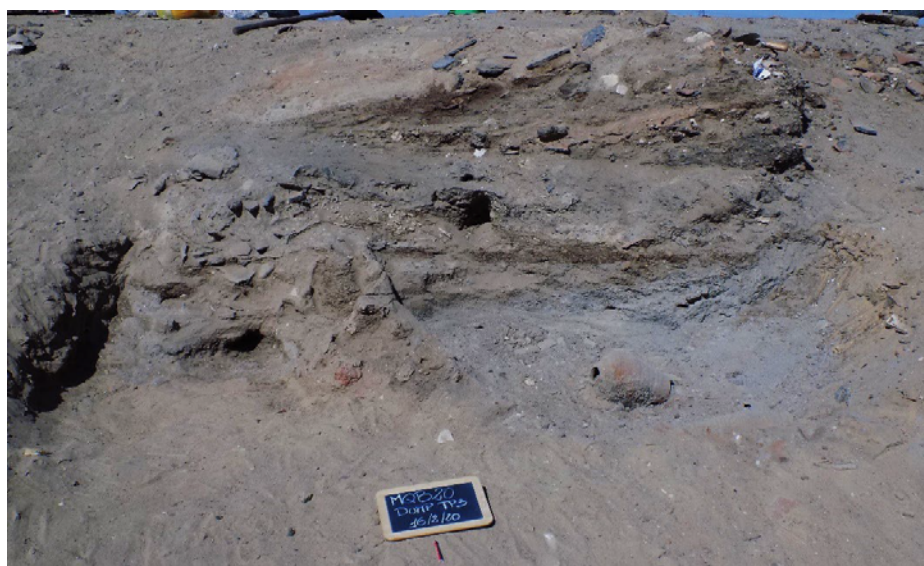


3D model of the furnace area (the blue area indicates the Trench Pits sector).



Another possible opening of the kiln from south (upper picture, red arrow) and the inner view of the multi-vaulted chambers of the furnace from it (lower picture).

from this survey is that the several inner chambers of the kiln seem to be linked one another through short passages. Moreover, the GoPro investigation allows to suggest that this large structure (maximum size of 43.9×21.3m) may have more openings on the southern side, one of which is still partially visible today. Quite interesting elements to confirm the interpretation of this complex building as a furnace are: the position of the possible doorway of the furnace on the eastern side of the structure, while the prevailing wind is from North, and the composition of the upper level of the inner furnace consisting



The main furnace and the one related to it through a wall (upper picture), where the TP3 trench was opened (with traces of grey ash; lower picture)

in fragments of burned bricks, vitrified brick surfaces and pieces of mudbricks and pottery vessels, probably results of the collapsed upper part of the kiln. Several impressions in the vaulted roof are, in fact, still visible today.

In addition to that, an archaeological survey of the surrounding area of the furnace suggested the hypothesis of a large production area at the site, formed by at least more five or six similar structures, possibly all related one another, or, at least, related to different kind of crafting activities connected to

the monastery of Manqabad. This hypothesis lays on the finding of traces of metalworking and glass production in the Southern Sector, and in several other 'dump'-areas of the site, where the debris of the previous Egyptian investigations of the site were collected. Considering all these elements, it is likely to suggest the presence of a multi-purpose crafting space in the Southern Sector of the Manqabad monastery, a characteristic which the site would share with numerous monastic sites of Late Antique Egypt.

3.3 Kilns for pottery production in Byzantine Egypt.

Searching comparisons to the Manqabad furnace was not an easy task, considering the difficulty to find detailed reports of excavation of the main monastic sites of Egypt, often conducted at the beginning of the 20th century. In addition to that, the most recent research works deal more with consumption of pottery² and food³ by the monastic community (or with the sociological aspects of trade and pottery monastic manufacturing⁴) then with the relationship between pottery production and monasticism through an archaeological perspective.

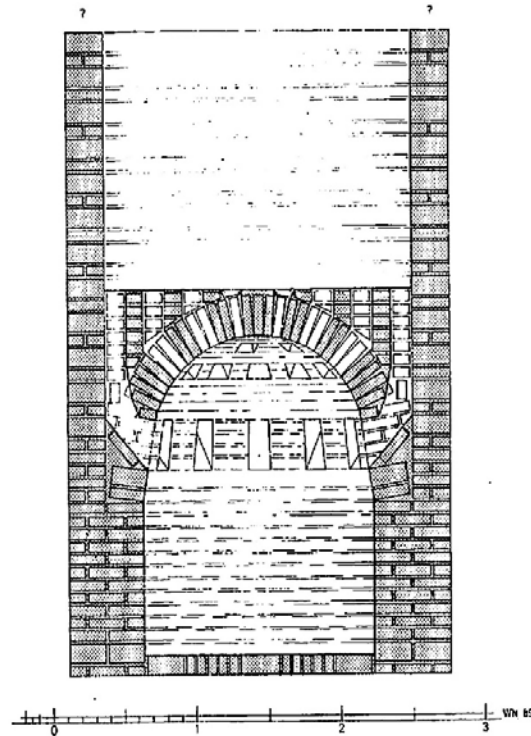
Therefore, some parallels are possible only considering few recent excavations, such as, for example, the investigation of the kilns of the Apa Jeremia monastery at Saqqara⁵. In the south-west area of the complex, in fact, a productive area with at least 6 furnaces was found: the kilns were set in a mudbrick building of an earlier dating, but older than the VIth century AD. In the report, only the kiln 121 has been described in details, with a reconstructed height of about 4 m., the internal diameter of 2,60 m., a fuel chamber paved in bricks, and a vaulted firing room. As regards the produced typologies, they belong to the daily life and represent a domestic use, not very sophisticate. The kiln has the opening on the eastern side through a doorway and a first layer of the inner deposit consisting of dark sand material, fragments of burned bricks and pieces of mudbricks. This description could be well suited also

² Kostantinidou 2012.

³ Layton 2002.

⁴ Schrunk 2003.

⁵ Ghaly 1992 pp. 162-165.



The furnace 121 at the monastery of Apa Jeremia, Saqqara (Ghaly 1992 fig.3).

to describe the furnace of Manqabad, even if, unfortunately, the complete archaeological investigation of this kiln was not possible during the 2020 season, but it has been planned for the forthcoming season. Moreover, even if the inner space has not yet been object of a proper archaeological investigation, more than one dome has been noticed during the preliminary survey, as well as the massive presence of bricks used as building material. In addition to that, the numerous pottery fragments found scattered in the Southern Sector have revealed a large range of typologies, to be identified not only as coarse ware, but also as fine vessels (partially locally produced) and imports.

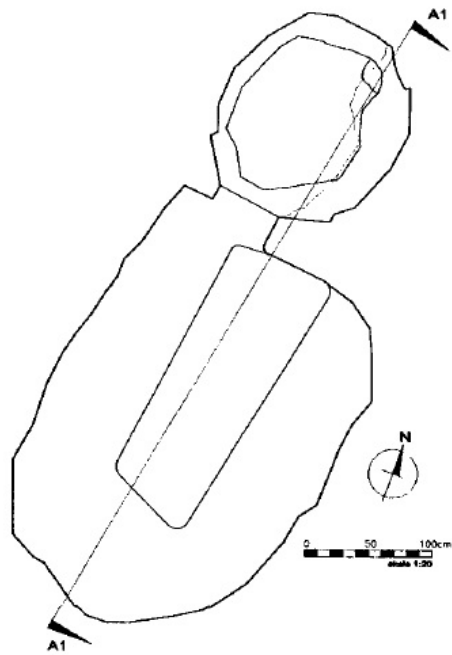
In fact, about 545 pottery fragments have been there collected, among whose there are cooking pots, lids, jars and dishes, some Egyptian Red Slip Wares (local workshop), Aswan wares, and amphorae, mostly Late Roman 7, but also Late Roman 1 (Cilicia, Cyprus), Late Roman 5 (Palestinian and local) and Gaza Jars (see the catalogue of this volume). Therefore, notwithstanding some similarities between the two structures, the outer dimension and the pottery types found in the area of the Manqabad kiln suggest a broader range of standardized production, in comparison to Saqqara.



Furnace of the St. Simeon monastery, Aswan (Ballet 1991 fig.21).

Another interesting parallel is with the monastery of St. Simeon at Aswan, where six more kilns were found in the southern area of the complex. The morphology of the kiln here is quite unlike from the beforementioned examples: there is, in fact, no separation between the fuel chamber and the firing room. Moreover, the produced types are different from the Saqqara repertoire, since in Aswan there were produced more fine table wares⁶. The overall system of St. Simeon deals more with a very standardized manufacture, which apply a proper industrial model, not limited to the needs of the local monastic community, but planned for a long-distance trade. In addition to that, the productive area includes also different kind of crafting, such as kilns related to food preparation (bread) and wine-making. The element of heterogeneity could be a common trait between Aswan and Manqabad, together with the large dimension of the dump area and the long-distance trading system.

⁶ Ballet & Picon 1991 pp. 141-142.



Furnace of the monastery of Old Dongola, Sudan (Jakobielski 2001 fig.9).

The atelier at Old Dongola represents an additional example of pottery production outside Egypt, where three furnaces were found by the Polish archaeological mission working there since 1976. The productive area is located north-west to the monastery and the morphology of the kilns is cylindrical and could be considered technologically innovative mainly because of the revetment of the inner walls set for high temperature. The range of produced types spans through several typologies of fine table wares, possibly imitation of the Aswan main known classes, which were distributed up to Upper Egypt. An exceptional case is Kellia, in the Nile Delta area, a large monastic site well known for its peculiar and massive pottery production (*Kellia type*), where however no clear archaeological documentation of the kilns has been attested. The site, in fact, has been subject of significant threats for its preservation since 1960s, because of the Egyptian government intensive efforts to reclaim desert territories and develop agriculture through irrigation in the western Delta hinterland. The result was a rising water level that increasingly saturated and destabilized the ground in and around the monastic remains. Each year, portions of the site were lost to unmonitored agricultural expansion, and in 1990 archaeological work

at Kellia was suspended⁷. Only in recent times (2006), the Yale Monastic Archaeology Project resumed archaeological work at the site, through a series of geophysical surveys and small-scale excavations. Finally, interesting comparison can be made with the sanctuary of Abu Mena, located in the Alexandria region, which was a well known pilgrimage center of Late Antique Egypt. The main attested production is the so-called 'pilgrim flask', item that was widely spread in the whole Mediterranean. During the investigation of Kaufmann at the beginning of the 20th century, some furnaces were found in the southwestern sector of the site, even if they were later destroyed. The produced types include also lamps and amphorae, probably related to the wine-making process well attested at the site. The manufacture of



Kiln of the Abu Mina sanctuary (Kaufmann 1908)

⁷ <https://egyptology.yale.edu/expeditions/current-expeditions/yale-monastic-archaeology-project-north-y-map-north/kellia-and-pherme>

items specifically linked to the pilgrimage activity seems not to be restricted to exclusive areas of the production sector, but more likely associated with the rest of the pottery production.

The use of 'sacred' clay from the sanctuary would have provided an added value to this products, promoting their wide circulation. More in general, the Egyptian Late Antique pottery production could be considered as a standardized system, in which several environmental and cultural elements are mixed together forming a model where every space of the monastic complex has been organized and finalized not only to crafting production, but also to housing monastic or pilgrims communities and to perform religious activities⁸.

3.4 Some remarks about the pottery production at Manqabad monastery.

Taking into account the characteristics of the abovementioned sites of pottery production within monastic complexes of Late Antique Egypt, the elements pertaining to the Manqabad furnace area can definitely be ascribed to a large sale of production and commercial exchanges⁹. In fact, starting from the archaeological features of the Southern Sector of the site, several data can support this hypothesis: first of all the large dimension and number of sherd heaps (up to 6 m.) all gathered in a specific area (about 500x250 m.). A second indicator is the possible presence of more than one furnace related to the numerous dumps with a very high density of sherds, many of which are amphorae-related. As already



View of the several sherd heaps of the Southern Sector from west (left picture) to east (right picture).

⁸ Antonelli 2015, p. 456.

⁹ These elements have been detected by Rieger and Möller, 2011, pp. 144-150.

stated, the area can represent a multi-production site of crafting activities, not only related to pottery, as the numerous finding of burnt bricks with vitrified surfaces indicates. Moreover, the main structure of the kiln investigated so far lies just few meters (ca. 25 m.) outside the southern wall of the monastery of Manqabad, probably to keep separated the manufacturing area from the proper monastic complex. This element in particular is shared with many of the example of kilns considered for the comparison, which seem to adopt more frequently a southern position for the pottery furnaces, possibly related to the direction of the prevailing wind (?), or to a better organization of the wastes of production. As regards the identification of the pottery types locally produced, it is possible to suggest some hypothesis: AE7 amphorae (LRA7) fragments and complete items, for example, have been found in large numbers in the Southern Sector and all over the site, and could likely represent one of the main production of Manqabad. Secondly, some small carinated cups (Catalogue **Manqabad 121, 122, 123, 127**), of which no strict parallels have been found so far, which have also been produced as fine wares



Southern wall of the monastery (red arrow) and the main structure for production (blue arrow).



Brick with burnt/vitrified surface from the furnace area (Southern Sector).

with stamped motifs on the inner surface¹⁰. Thirdly, some terracotta female figurines (Catalogue **Manqabad 182, 183**) with painted decoration, which seem to show distinct, and possibly local/regional characteristics, not to be shared with similar items found in other sites of Middle Egypt (Antinoopolis, Qau el-Kebir). As regards importation, several typologies have been identified among the Manqabad repertoire, such as for example fragments of ARS wares from Tunisia, Gazan amphorae, LRA1 from Cilicia and Cyprus, clear evidence of long distance trade/exchanges in which the monastery of Manqabad was involved. The reason behind this wealthy assemblage may possibly lay in the hypothesis that this monastery may have been a pilgrimage center of Late Antique Egypt. In fact, several additional elements seem to point all to this suggestion, starting from the noteworthy quantity/quality of pottery types recorded at the site, which very likely outreach the need of the local monastic community, however wide it might be. Another interesting element is to be found in the Central Sector of the site, which includes remains of a peculiar building of Manqabad: a large bath-like complex of

¹⁰ Incordino 2020 **Manqabad 21, 25-39**.



Bath-like complex from Manqabad Central Sector.

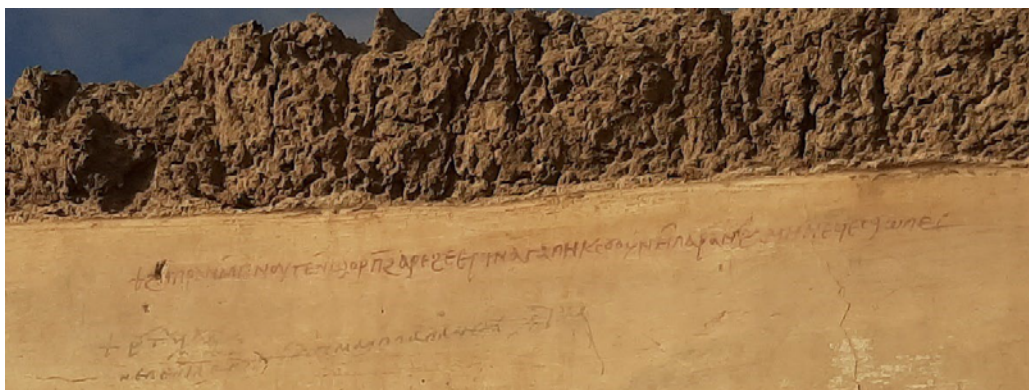


Collective baths for pilgrims of the Abu Mena shrine.

extraordinary dimensions. This monumental structure, discovered and partially excavated in 1986, is characterized by the occurrence of a *calidarium* (with brick *suspensurae*), a *frigidarium*, and several columns with Corinthian capitals still *in situ*¹¹, hardly comparable to the smaller buildings usually devoted to baths known from other Christian complexes in Egypt, with the sole exception of the impressive baths of the Sanctuary of Abu Mena (south-east of Alexandria). If, as suggested, the monastery of Manqabad may be considered a pilgrimage center, these collective baths would be

¹¹Pirelli, Buzi 2013 pp. 203-204.

intended mainly for pilgrims and used for purification, baptism and healing purposes, and/or fecundity related practices¹². The pilgrims' inflow, therefore, could have represented among the major economic resources of the Manqabad community, contributing noteworthy to the general wealth, cultural level and to the high standard of the craftsmen employed, already evidenced by the texts, sculptures and paintings that decorated the architectural spaces of private and common buildings. Moreover, abundant evidence of visitors/pilgrims who came to Manqabad have been collected on the site, mostly in form of written prayers found on pottery fragments (see **Manqabad 205**), or graffiti on walls. Unfortunately, no indication about the eponymous saint of the site can be inferred by these texts so far¹³, therefore more in-depth analysis of Coptic, Greek and Arabic historic, geographic, hagiographic and liturgical texts are planned in order to provide new information on this topic in the next future.



Wall inscriptions from the Central Sector of the site of Manqabad.

Additional analogies between Manqabad and the Abu Mena shrine are possible to trace, if considering that in both sites several housing units (possibly devoted to pilgrims residence too) have been documented, possibly also divided by genre¹⁴. In view of the numerous similarities in pottery types

¹² In order to verify this supposition, the archaeological documentation already collected will be enriched with a complete archaeological survey and excavation to be conducted hopefully within the next field seasons.

¹³ Notwithstanding its large dimensions and wealth, the toponym Manqabad/'Mankapot' is rarely attested in ancient textual source, while the popular tradition and an Arabic text in Kufic script relate the monastery to Saint Onophrius. However, except for the Arabic text, no ancient source relates the place to this saint. More likely, Jeremias could have been the original eponymous saint before the monastery was dedicated to Onophrius, according to the several evidence found in situ related to this figure.

¹⁴ Stafford 2019, p. 25.

identified in both sites, among which particularly prominent is the production of terracotta female figurines, the idea that Manqabad could represent the southern counterpart of the northern sanctuary of Abu Mena is tempting, but only further investigation in the Central Sector and in the southern pottery production area at Manqabad would add more data to possibly confirm this hypothesis.

Conclusions

The recent finding of a furnace-like structure in the Southern Sector of the Manqabad monastery has been definitely the largest outcome of the most recent research on the ceramics study of the site. In fact, the evidence in support of a local production has drastically changed the general interpretation on the pottery assemblage analysed so far. Leaving aside for a moment the identification of the typologies possibly manufactured at Manqabad, which at the present state of knowledge can only be suggested, since no proper archaeological investigation in the furnace area have been conducted so far, some observations can be drawn about the origin of the types identified.

As regards the most common wine containers, LRA7/AE7 amphorae, for example, one of the hypothesis regarding their place of production for the Middle Egypt region was the well known atelier of el-Ashmunein, not so distance from Manqabad. But considering the high numbers of fragments (and complete items) of this type found scattered all over the site and kept in the SCA warehouse, it is likely to suggest a local production, which some planned archaeometrical analysis may, hopefully, confirm in the near future. The same can be said for some un-paralled typologies, such as the small cups with stamped motifs on the inner surface (**Manqabad 207, 209, 210**), or the distinctive terracotta female figurines documented (**Manqabad 182, 183**), which bear peculiar characteristics possibly to attribute to a local/regional variant.

Moreover, the possibility that Manqabad was a pilgrimage centre of Late Antique Egypt may well explain the high cultural milieu and crafting, attested since the first surveys conducted by the Italian-Egyptian mission in 2012. But at the same time, the several parallels found between the pottery assemblage of the monastery of Manqabad and other Middle Egypt sites may be reconsidered, suggesting that some of the types may actually be produced at Manqabad and then traded or exchanged with monastic communities such the ones of el-Ashmunein, Antinoopolis, Amarna Kom el-Nana, ect. This hypothesis could be even more likely if considering sites where traces of a local centers of production have not been identified so far, as in the case of Kom el-Nana in particular.

Some remarks on the decorative program of ceramics from the site may be added, noticing a persistent occurrence on female human figures, showing an image of a bejewelled lady, or depicting females on terracotta figurines, symbols of good fortune and prosperity. Could this figures may be connected to

peculiar rituals performed at Manqabad, perhaps connected to fertility issues? This element also contributes to add evidence to the hypothesis of a busy and thriving female pilgrimage practice in Late Antique Egypt, already supported by literary, archeological and architectural data¹. In fact, it's logical to suppose that an important part of pilgrims were actually women, if we consider the relevance of the long process of conception, pregnancy, deliver and upbringing of children for this gender, and the ancient society in general. The next step is to consider that those pilgrim woman are not virgins nor widows but married ones, probably dealing with fertility issues or simply willing to safely survive the experience of maternity through the intervention of a saint². Of course, all this speculation stay subject to the accomplishment of the planned archaeological investigation on the site, together with the in-depth analysis of Coptic, Greek and Arabic historic, geographic, hagiographic and liturgical texts, which are currently in progress in order to find out the eponymous saint of the Manqabad monastery.

In addition to that, what has been previously suggested, i.e. a possible spiritual bond between Manqabad and the monastic community of Apa Jeremia (Saqqara) because of the connection between Onophrius and Saqqara quoted by literary sources, and on some similarity in the architectural style of both monastic sites³, may be completely revised in light of this new observation about the similarities between Manqabad and Abu Mena eponymous saint (related to fertility for Manqabad too?), architecture (large bath-like structures) and pottery typologies (female figurines and water/sacred oil containers locally produced?). Because of the numerous religious elements that the two sites seems to share, it is tempting to consider that Manqabad would have been a southern counterpart of the Abu Mena, but, unfortunately, this hypothesis is actually not supported by a concrete evidence so far.

Finally, the analysis of the typologies identified in the 2018 and 2020 seasons of work generally confirms the already suggested chronological range of dating for the site (6th-7th century AD), adding some items dated to the 5th century, with some doubts still persisting about the inclusion of the end of the 4th century⁴.

¹ Stafford 2019, pp. 11-13.

² Stafford 2019, pp. 36-37.

³ Incordino 2020 p. 101.

⁴ The persistence of several types, also imported such as the ARS and their local imitation does not allow at the present state of our knowledge to include the end of the 4th century to the dating of the Manqabad monastery.

Future direction of research

The analysis of the pottery material from Manqabad started about 8 years ago, and in the process of study, several methodological issues drawn the present writer's attention, rising more questions than answers. Therefore, to better study this material and try to actively contribute to the debate, a project has been developed through the years, and recently submitted for the MSCA Global Fellowship 2022, in order to adopt, in the first place, a new holistic methodology of research laying on four main chosen directions: archaeological investigation, morphometric analysis⁵, identification of the *chaîne opératoire*⁶ and iconographical studies. This method would be the most suitable for the study of the assemblage from Manqabad (also from the warehouse of el-Ashmunein and Shutby), since the Egyptian authorities do not allow the export of archaeological material outside the country, and so a practical field-based procedure of ceramic analysis would be highly needed and easily used. The recent (2020) discovery at Manqabad of a large kiln-like structure, the presence of several pottery dumps and the possibly occurrence of more kiln-like structures (to be confirmed by the next excavation) support the hypothesis of a very large workshop for ceramic production at the site, probably working not simply for the needs of the local community, but for a larger long-distance trade, according to the types of pottery identified⁷ (African Red Slip Ware from Tunisia, Late Roman Amphorae 1 from Cilicia or Cyprus; Palestinian and Gaza amphorae). The large size of the surveyed kiln (43x18 m.) and its articulated structure have no parallel so far, therefore the more in-depth analysis of the local ceramics will provide important and in context information about the social groups involved in the production process, their relationship with the activities of the adjacent monastic community and village, and their involvement in the possible pilgrimage production at Manqabad, already supported by indirect evidence (small cups with stamped motifs/trademarks and inscribed prayers, votive terracotta figurines, a complex bath structure in the central area of the site, etc.). The application of this new holistic approach will involve also museum collection items related in particular to similar sites of the Middle Egypt region: Asyut (items today at the Turin Museum) and Antinoopolis (items today at the Archaeological Museum and Papyrological Institute of Florence). This almost unpublished material, in fact, can serve as a quite useful dataset with

⁵ Martinez-Carrillo A., Barcelo J., (2017) Formal Typology of Iberian Ceramic Vessels by Morphometric Analysis, in: Hunt A. (ed.) The Oxford Handbook of Archeological Ceramic Analysis, DOI: 10.1093/oxfordhb/9780199681532.013.35.

⁶ Roux V. (2017) Ceramic Manufacture: The *chaîne opératoire* Approach, in: Hunt A. (ed.) The Oxford Handbook of Archeological Ceramic Analysis, DOI: 10.1093/oxfordhb/9780199681532.013.8.

⁷ Incordino I. 2020. Pottery of Manqabad. A selected catalogue of the ceramic assemblage from the monastery of 'Abba Nefer' at Asyut (Egypt), ACCESS ARCHAEOLOGY, OXFORD. Archeopress.

a large informative potential to be added to the preliminary results derived from the field. This new project, called “*People through Pots*”, will adopt a method which is original, efficient, based on simple yet low-cost technology, which can be easily applied to both field and collection items, and can process a large number of data in a short period of time.

The application of this method would be based on the new material derived from the planned future work seasons of excavation at selected areas of Manqabad, such as the Central Sector and the kiln area of the Southern Sector. With the same aim, a detailed survey of the debris embankment just above the Northern Sector should be highly recommended, to add more information about the typologies of pottery material deriving from the housing units investigated so far, since this mound derives probably from the previous Egyptian excavations. The import task of documenting ceramic material has to be continued also for the items derived from the SCA warehouses. In fact, the el-Ashmunein store holds at least one hundred pottery items still to be documented, while the Shutby store must contain about 80 wares never the object of study so far.

The project include the fundamental collaboration with the University of Naples “L’Orientale” (supervisor: Prof. Rosanna Pirelli Director of the Italian-Egyptian mission at the monastery of Manqabad, Asyut), and with the Institut Français d’Archéologie Orientale du Caire (IFAO; supervisor: Dr. Dr. Sylvie Marchand and Dr. Anita Quiles), as an unique opportunity for the present writer to combine data acquired from this project with the most recent and ongoing researches on Byzantine pottery (and ceramic classification in general) conducted by the IFAO in the last two decades. Moreover, a secondment period consisting of training courses (morphometry, portable X-ray fluorescence, colour analysis and colorimetry) has been planned to be acquired at the University of Granada. Department of Prehistory and Archaeology, Excellence Unit of Archaeometry (supervisor: Prof. Francisco Contreras). The final outcome of the research will be an innovative, web-based, open access, which could be continuously updated with excavation or warehouse material.

Bibliography

- Adams W.Y. 1986. *Ceramic Industries of Medieval Nubia*, 2 vols. Princeton.
- Antonelli S. 2015. 'Impianti di produzione ceramica in ambito monastico: alcune considerazioni', in: Pani L.E. (ed.) *Teoria e pratica del lavoro nel monachesimo altomedievale. Atti del Convegno Internazionale di studio. Subiaco 7-9 giugno 2013, Roma*, pp. 453-471.
- Aravecchia N. 2019. *Christians of the Western Desert in Late Antiquity: the fourth-century church complex of Ain el-Gedida, Upper Egypt*, Thesis (PhD) University of Minnesota.
- Auth, S.H. 2000. 'Significance of Egyptian, classical and Christian Themes in Coptic art', in: Immerzeel M., van der Vliet J., Kersten M., van Zoest C. (eds.) *Coptic Studies on the Threshold of a new Millennium, vol. 2. Proceedings of the seventh International Congress of Coptic Studies*, Leiden, pp. 1141 –1158.
- Atiya A.S. (ed.) 1991. *The Coptic Encyclopedia*. New York.
- Bagnall R. S. 1993. *Egypt in Late Antiquity*. Princeton.
- Bailey D. 1990. The local Red Slip Ware from Hermopolis Magna, in : Godlewski, W. (ed.) *Coptic and Nubian Pottery. Part I. International Workshop, Nieborow, August, 28-31 1988*. Occasional Paper National Museum in Warsaw, pp. 4–26.
- Bailey D. 1996 'The Pottery from the South Church at El-Ashmunein', in: *Cahiers de la Céramique Égyptienne* (CCE) 4, pp. 52-86.
- Bailey, D. 1998. *Excavations at el-Ashmunein V. Pottery, Lamps and Glass of the Late Roman and Early Arab Periods*, British Museum Expedition to Middle Egypt, British Museum Press.
- Bailey D. 2008. *Catalogue of the terracottas in the British Museum. vol. IV, Ptolemaic and Roman terracottas from Egypt*, British Museum Press, London.
- Ballet P., Picon M. 1987. 'Recherches Préliminaires sur les origines de la céramique des Kellia (Égypte). Importations et productions égyptiennes', in: *Cahiers de la Céramique Égyptienne* (CCE) 1, pp.17-48.
- Ballet P, Scanlon G.T. 1991 'Ceramics, Coptic', in: Torjesen K.J, Gabra G. (eds.) *The Coptic Encyclopedia*, new York, vol I, pp. 480-511.
- Ballet P. et alii. 1991. 'Artisanat de la céramique dans l'Égypte Romaine tardive et Byzantine. Prospections d'ateliers de potiers de Minia a Assouan', in: *Cahiers de la Céramique égyptienne* (CCE) 2, pp. 129-144.

- Ballet, P., Bosson, N. and Rassart-Debergh, M. 2003. *Kellia: 2, L'Ermitage copte QR 195. Céramique, inscriptions, décor*, FIFAO 49. Le Caire.
- Ballet, P., and Poludnikiewicz, A. 2012. *Tebtynis V. La céramique des époques hellénistique et impériale. Campagnes 1988-1993. Production, consommation et réception dans le Fayoum méridional*, FIFAO 68. Le Caire.
- Ballet, P., Guidotti M.C. 2014. 'Identificazione e analisi delle discariche domestiche e industriali della città di Antinoe', in: Pintaudi R. (ed.) *Antinoopolis II*, Firenze, pp. 165 – 221.
- Ballet P. 2020. *Figurines et société de l'Égypte ptolémaïque et romaine*, Edition Picard, France.
- Beckh T. 2013. *Zeitzeugen aus Ton. Die Gebrauchskeramik der Klosteranlage Deir el Bachit in Theben-West (Oberägypten)*. SDAIK 37, Kairo.
- Bisson de la Roque, F. 1933, Rapport sur les fouilles de Médamoud (1931 et 1932), Le Caire, Imprimerie de l'Institut français d'archéologie orientale (IFAO), (Fouilles de l'Institut français d'archéologie orientale du Caire = FIFAO ; 9.3), Le Caire.
- Blanke L. 2015. 'Life on the edge of the Desert: The Water Supply of a Late Antique Monastery in Egypt', in: J. Kuhlmann Madsen, N.O. Andersen and I. Thuesen (eds.) *Water of Life*, Copenhagen, pp. 130-143.
- Bolman, E. 2001. 'Joining the Community of Saints: monastic Paintings and ascetic Practice in Early Christian Egypt', in: McNally S. (ed.) *Shaped Community: the Art and Archaeology of Monasticism*, BAR International Series 941, Oxford, pp. 41–59.
- Bolman, E. 2007. 'Depicting the Kingdom of Heaven: Paintings and Monastic Practice in early Byzantine Egypt', in: Bagnall, R.S., (ed.) *Egypt in the Byzantine World 300-700*, Cambridge University Press, pp. 408–433.
- Bolman, E. 2016. *The Red Monastery Church: Beauty and Asceticism in Upper Egypt*, Yale University Press.
- Bourriau, J. 1981. *Umm el-Ga'ab. Pottery from the Nile Valley before the Arab conquest*. University Press Cambridge.
- Cattin M.I. 1986. *Le vas et l'architecte. L'intégration de la céramique dans les bâtiments coptes des Kellia (Basse Égypte)*. Université de Neuchâtel (unpublished MA thesis).
- Chassinat, E. G. 1911. *Fouilles à Baouit*, Mémoires de l'Institut français d'Archéologie Oriental du Caire (MIFAO) 13. Le Caire.
- Clédat, J. 1912. *Le Monastère et la nécropole de Baouit*, Mémoires de l'Institut français d'Archéologie Oriental du Caire (MIFAO) 111, Le Caire.
- Cockle, H. 1981. 'Pottery manufacture in Roman Egypt', in: *Journal of Roman Studies* 71, pp. 87-97.

- Colmenero V., Jiménez Serrano A., Martínez de Dios, 2017. 'Cerámica bizantina del monasterio copto de Qubbet el-Hawa en Asuán primer análisis arqueológico', in: *Bulletin de la Liaison de la céramique Égyptienne* (BCE) 27, pp. 83 -133.
- Czyzewska E. 2012. 'Late Roman Pottery from Gebel al-Gharbi', in: Kahl J. et alii, *The Asyut Project: Tenth Season of Fieldwork*, in: *Studien zur Altägyptischen Kultur* (SAK) 42, pp. 138- 152.
- Daumas F., Guillaumont A. 1969. *Kellia I: Kôm 219, fouilles exécutées en 1964, 1965*, IFAO, Le Caire.
- Dixneuf D. (ed.). 2017. *LRCW 5-2. Late Roman coarse wares, cooking wares and amphorae in the Mediterranean. Archaeology and archaeometry*. Centre d' Études Alexandrines. Alexandria.
- Dixneuf D. 2018. *Amphores Égyptiennes. Production, typologie, contenu et diffusion (III^e siècle avant J.-C. - IX^e siècle après J.-C.)*. Etudes Alexandrines 44. Centre d' Études Alexandrines. Alexandrie.
- Donadoni S. et alii. 1974. *Antinoe: (1965-1968)*. Missione archeologica in Egitto dell'Università di Roma. Università di Roma. Istituto di Studi del Vicino Oriente. Serie Archeologica 21. Roma.
- Duncan-Flowers M.J., Dautermann Maguire E., Maguire H.P. 1989. *Art and holy Powers in the early Christian House*, Chicago.
- Egloff, M. 1977. *Kellia, La Poterie Copte. Quatre Siècles d'artisanat et d'échanges en Basse Egypte*, Recherches Suisse d'Archéologie copte III, Genève.
- Engemann J., 2016. *Abu Mina VI. Die Keramikfunde von 1965 bis 1998*. Wiesbaden, Harrasowitz.
- Faiers, J. (ed.) 2005. *Late Roman Pottery at Amarna and related Studies*, Egypt Exploration Society Excavation Excavation Memoir 72, London.
- Faiers, J. 2013. *Late Roman Glassware and Pottery from Amarna and Related Studies*, Egypt Exploration Society Excavation Memoir 102, London.
- Faiers, J. 2014. 'Wadi Sarga revisited: A preliminary Study of the Pottery excavated in 1913/14', in: O'Connell E.R. (ed.) *Egypt in the First Millennium AD: Perspectives from new Fieldwork*, 177-89. British Museum Publications on Egypt and Sudan 2. Leuven.
- Frankfurter D. 2018. *Christianizing Egypt. Syncretism and Local Worlds in Late Antiquity*. Princeton.
- Gahly H. 1992. 'Pottery workshops of Saint-Jeremia (Saqqara)', in: *Cahiers de la Céramique égyptienne* (CCE) 3, pp. 162-171.
- Gayraud R.P. 2007. 'Quand l'amphore fait le mur...', in: *Cahiers de la Céramique égyptienne* (CCE 8), vol. II, pp. 721-725.
- Gempeler R. 1992. *Elephantine X. Die Keramik römischer bis früh-arabischer Zeit*. Mainz am Rhein.

- Górecki, T. 1990. 'Coptic painted Amphorae from Tell Atrib – introductory Remarks on decoration', in: Godlewski, W., (ed.) *Coptic and Nubian Pottery. Part I. International Workshop, Nieborow, August, 28-31 1988*. Occasional Paper National Museum in Warsaw, pp. 34–48.
- Godlewski W., Danys K., Maślak S. 2016. 'Deir el-Naqlun 2014-2015. Preliminary Report', in: *Polish Archaeology in the Mediterranean (PAM)* 25, pp. 265-288.
- Godlewski W. 1990. 'Coptic Pottery from Deir el-Naqlun (Fayum)', in: Godlewski, W., (ed.) *Coptic and Nubian Pottery. Part I. International Workshop, Nieborow, August, 28-31 1988*. Occasional Paper National Museum in Warsaw, pp. 49–62.
- Guidotti M.C., Pesi L. 2004. *La ceramica da Antinoe nell'Istituto Papirologico "G. Vitelli"*. Firenze.
- Guidotti M.C. 2011, Quelques curiosités typologiques de la céramique d'Antinoopolis, in: Aston D., Bader B, Gallorini C., Nicholson P, Buckingham S. (eds.) *Under the Potter's Tree. Studies on Ancient Egypt presented to Janine Bourriau on the occasion of her 70th Birthday*, Leuven, Paris, Walpole, pp. 433-439.
- Hayes J.W. 1972. *Late Roman Pottery*. The British School at Rome. London.
- Hayes, J.W. 1980. *Supplement to Late Roman Pottery*. London.
- Henein N.H., Wuttmann N. 2000. *Kellia. L'Ermitage copte QR 195. Archeologie et architecture*. FIFAO 41. Le Caire.
- Husson G. 1979. 'L'Habitat Monastique en Égypte á la lumière des papyrus grecs, des textes chrétiens et de l'archéologie', in: *Hommages á Serge Sauneron*, vol II Égypte post-pharaonique. Le Caire, pp. 191-207.
- Incordino, I. 2018. 'Criticità e prospettive nello studio del materiale ceramico proveniente dal monastero di "Abba Nefer l'eremita" a Manqabad (Asyut)', in: Betrò, M., de Martino, S., Miniaci, G., Pinnock, F. (eds.), *Egitto e Vicino Oriente antichi: tra passato e futuro. Atti del Convegno nazionale di Orientalistica*, Pisa 5-6 giugno 2017, Pisa University Press, Pisa, pp. 171–177.
- Incordino I., 2018. 'Second Pottery Survey', in: R.Pirelli et alii, The Italian Egyptian Project of Study and Conservation of the Monastery of Abba Nefer at Manqabad 2018 – 5th Campaign, in: *Newsletter di Archeologia CISA*, 9, pp. 305-350. <http://www.unior.it/ateneo/20095/1/notiziario-attivita-archeologiche-2017-18.html>
- Incordino, I. 2019. 'Analysis of a painted female Head among the pottery Decoration from the Monastery of Abba Nefer at Manqabad (Asyut)', in: *Studien zur Altägyptischen Kultur (SAK)* 48, pp. 107-116.
- Incordino I. 2019 (with contribution of Federica Facchetti), 'A Decorated jar of the Byzantine period in the Museo Egizio, Turin (Suppl. 15626)', in: *Rivista del Museo Egizio*, 3, Turin.

<https://rivista.museoegizio.it/article/a-decorated-jar-of-the-byzantine-period-in-the-museo-egizio-turin-suppl-15626/>

Incordino I. 2019. 'Alcune note sulla decorazione pittorica del repertorio ceramico proveniente dal Monastero di 'Abba Nefer l'Eremita' a Manqabad (Asyut)', in: Basile C., Di Natale A. (eds.) *Atti del XVII Convegno di Egittologia e Papirologia dell'Istituto Italiano per la Civiltà Egizia*. Quaderni del Museo del Papiro "Corrado Basile" vol. XVI, Siracusa, pp. 45-54.

Incordino I. 2019. 'Brief notes about regional elements of the pottery assemblage from the Byzantine site of Manqabad (Asyut)', in: Peterková Hloučová M., Belohoubková D., Honzl J., Nováková V. (eds.) *Proceedings of the XIX edition of Current Research in Egyptology Annual Symposium, held at the Czech Institute of Egyptology*, Charles University Prague, Access Archaeology, Archaeopress, Oxford, pp. 66-73. <https://www.archaeopress.com/ArchaeopressShop/Public/displayProductDetail.asp?id={6EECE581-B88B-4021-811B-1765F29BD218}>

Incordino I. 2020. 'Documentation and analysis of vessels sunk into the floor at the Monastery of Abba Nefer, Manqabad (Asyut, Egypt)', in: *Egitto e Vicino Oriente* (EVO) 42, pp. 83-94.

Incordino I. 2020, Pottery of Manqabad. A selected catalogue of the ceramic assemblage from the monastery of 'Abba Nefer' at Asyut (Egypt). Access Archaeology, Archaeopress, Oxford. <https://www.archaeopress.com/Archaeopress/Products/9781789695137>

Incordino I. 2022, 'Terracotta female figurines from the monastery of Manqabad (Asyut, Egypt): analysis and possible function', in: *ARCHIV ORIENTÁLNÍ* 90, pp. 1-21.

Incordino I. 2022 (in press) Animal-shaped vessels from the Late Antique monastic settlement of Manqabad (Asyut, Egypt), in *EVO* 45.

Jacquet, J. 2008. 'Un ermitage des Kellia, le kôm 4. Contribution à l'étude de la vie matérielle des moines', in: *Bulletin de l'Institut Français d'Archéologie Orientale* (BIFAO) 108, pp. 205-229.

Jacquet-Gordon H. 1972. *Les ermitages chrétiens du désert d'Esna. Céramique et objets*. vol. III, BIFAO 19. Le Caire.

Jakobielski S. 2001, 'Old Dongola : Season 2000', in : *PAM* 12, pp. 265-279.

Johnson B. 1981. *Pottery from Karanis*. Ann Arbor.

Kahl J. 2007. *Ancient Asyut. The First Synthesis after 300 Years of Research*, Wiesbaden.

Kaufmann K. M., 1910. *Die Menas-stadt und das Nationalheiligtum der altchristlichen Agypter*. Verlag von Karl W. Hiersemann, Leipzig.

- Konstantinidou A. 2012. Pot for Monks : ceramics and life in the Old Monastery of Baramus (Wadi el-Natrun), Egypt) 4th -9th c., Thesis PhD University of Leiden.
- Layton B. 2002. 'Social Structure and Food consumption in an Early Christian Monastery', in : *Le Muséon* 115, 1.2, pp. 25-55.
- Lecuyot G., Pierrat-Bonnefois G. 1992. 'A propos des lieux de production de quelques ceramiques trouvee a Tod et dans la Vallee des Reines', in: *Cahiers de la Céramique égyptienne* 3, pp. 173-180.
- Lecuyot G. 2000. 'La ceramique du mastaba d'Akhethetep a Saqqara. Observations preliminaires', in: *Cahiers de la Céramique Egyptienne (CCE)* 6, pp. 236-260.
- Lecuyot G., Pierrat-Bonnefois G. 2004. 'Corpus de la céramique de Tod. Fouilles 1980-83 et 1990', in : *Cahiers de la Céramique Egyptienne (CCE)* 7, pp. 145-204.
- Lecuyot G. 2015. 'Matériel de cuisine «copte» provenant de Saqqara', in: *Bulletin de la liason de la Céramique Égyptienne (BCE)* 25, pp. 127-147.
- Mackensen M., El-Bialy M. 2006. 'The Late Roman Fort at Nag el-Hagar near Kom Ombo in the Province of Thebeis (Upper Egypt)', in: *Mitteilungen des Deutschen Archäologischen Instituts (MDAIK)* 62, Kairo, pp. 161-195.
- S. Marchand et al. 2007. 'Amphores et conteneurs égyptiens et importés du VIIe siècle apr. J.C. Sondages récents de Bawit (2003-2004)', in: *Cahiers de la Céramique Egyptienne (CCE)* 8, pp. 309-343.
- Marchand S. 2013. 'La "Jarre aux papyrus" d'Edfu et autres jarres de stockage d'époque arabe découvertes à Tebtynis, Fayoum (Deuxième moitié du VIIe - Xe siècle Apr. J.C.)', in: Bader B. and Ownby M.F. (eds.) *Functional Aspects of Egyptian Ceramics in their Archaeological Context. Proceedings of a Conference held at the McDonald Institute for Archaeological Research, Cambridge, July 24th-July 25th 2009*, Leuven, Paris, Walpole, pp. 327-349.
- Maspero, J. 1932. *Fouilles exécutées à Baouit*, MIFAO 59. Le Caire.
- Majcherek G. 1995. 'Gazan Amphorae: Typology Reconsidered', in: Meyza H., Mlynarczyk (eds.) *Hellenistic and Roman Pottery in the eastern Mediterranean. Advances in scientific Studies*. Warszawa, pp. 163-178.
- Mohamed, F.M. 2004. 'Quelques jarres a décor peint, provenant du monastere de Saint-Jeremie a Saqqara', in: Immerzeel, M., van der Vliet, J., Kersten, M., van Zoest, C. (eds.) *Coptic Studies on the Treshold of a new millennium. Proceedings of the seventh International Congress of Coptic Studies*, Leiden 2000, Peeters, pp. 1231- 1257.
- Nagel G. 1938. *La céramique du Nouvel Empire à Deir el Médineh. Première Partie*, IFAO, Le Caire, pp. 109-111.

- Neyret C. 1968. 'Panorama et évolution de la céramique copte d'après de la collection du Musée du Louvre', in: *Boletín de la Asociación española de orientalistas* 4, Madrid, pp. 145-155.
- Neyret, C. 2008. Catalogue en ligne. La céramique copte dans les collections du Musée du Louvre, Paris <http://musee.louvre.fr/bases/neyret/3100.php?page=3100&lng=0&>
- O'Connell E.R. 2007. 'Transforming Monumental Landscapes in Late Antique Egypt: Monastic Dwellings in legal Documents from Western Thebes', in: *Journal of Early Christian Studies* 15:2, pp. 239-273.
- Pierrat, G. 1991. 'Essai de classification de la ceramique de Tôd de la fin du VIIe siècle au debut du XIIIe siecle apr. J.-C.', in: *Cahiers de la Céramique égyptienne* (CCE) 2, Le Caire, pp. 145-204.
- Pierrat, G. 1990. 'Poteries trouvées dans les fouilles de Tôd, 6e-12e siècles après J.C.', in: Godlewski, W., (ed.) *Coptic and Nubian Pottery. Part I. International Workshop, Nieborow, August, 28-31 1988*. Occasional Paper National Museum in Warsaw, pp. 29-33.
- Pierrat, G. 1996. Evolution de la ceramique de Todd u Ile au VIIe siecle apr. J.-C., in: *Cahiers de la Céramique égyptienne* (CCE) 4, Le Caire, pp.189-206.
- Pintaudi, R. 2008. (ed.) *Antinoupolis I. Scavi e Materiali*, Firenze, Istituto Papirologico "G. Vitelli", 2008.
- R.Pirelli et alii, 2018. 'The Italian Egyptian Project of Study and Conservation of the Monastery of Abba Nefer at Manqabad 2018 - 5th Campaign', in: *Newsletter di Archeologia CISA*, 9, pp. 305-350. <http://www.unior.it/ateneo/20095/1/notiziario-attivita-archeologiche-2017-18.html>
- Pirelli, R., Buzi, P., Incordino, I., Salsano, A. 2017. 'The Results of the first four Seasons' Work of the Italian Egyptian Mission at the Monastery of Abba Nefer at Manqabad', in: Guidotti M.C., Rosati G. (eds.) *Proceedings of the XIth International Congress of Egyptologists held in Florence, 23-30 August 2015*. British Archaeological Reports, pp. 491-498.
- Pirelli, R., Buzi, P., Giunta, R., Salib, E., Mastromanno, V. 2016. 'The Coptic Site of Manqabad: an Italian-Egyptian Project', in: Buzi P., Camplani A., Contardi F. (eds.) *Coptic Society, Literature and Religion from Late Antiquity to Modern Time*, ORIENTALIA LOVANIENSIA ANALECTA, vol. II, Leuven, pp. 1433-1446,
- Pirelli, R. 2015. 'The Italian-Egyptian Project of Study and Conservation of the Monastery of Abba Nefer, Manqabad (Asyut): Third Campaign', in: *Newsletter di Archeologia CISA*. V, pp. 255-264.
- Pirelli, R. 2014. 'The Italian-Egyptian Project of Study and Conservation of the Monastery of Abba Nefer, Manqabad (Asyut): First and Second Campaign', in: *Newsletter di Archeologia CISA* IV, pp. 441-454.
- Pirelli, R., Buzi, P. 2013. 'Il progetto italo-egiziano di studio e conservazione del "monastero di Abba Nefer" a Manqabad (Asyut)', in: Pirelli R. (ed.) *Ricerche Italiane e Scavi in Egitto*, vol. VI, pp. 197-209, IL CAIRO, Istituto Italiano di Cultura.

- Pyke G, Brooks Hedstrom H. 2013. 'The Afterlife of Sherds: Architectural Re-use Strategies at the Monastery of John the Little, Wadi Natrun', in: Bader B. and Ownby M.F. (eds.) *Functional Aspects of Egyptian Ceramics in their Archaeological Context. Proceedings of a Conference held at the McDonald Institute for Archaeological Research, Cambridge, July 24th-July 25th 2009*, Leuven, Paris, Walpole, pp. 307-325.
- Quibell, J. E. 1912. *Excavations at Saqqara (1908-1909, 1909-1910). The Monastery of Apa Jeremias*, Cairo, Institut Français d'Archéologie Orientale.
- Quibell, J. E. 1909. *Excavations at Saqqara (1907-1908)*. Cairo, Institut Français d'Archéologie Orientale.
- Rieger K., Müller H., 2011, Kilns, Commodities and Consumers: Greco-Roman Pottery Production in Eastern Marmarica (Northwestern Egypt)', in: *Archäologischer Anzeiger* 1, pp. 141-170.
- Rodziewicz M. 1976. *Alexandrie I. La ceramique Romaine tardive d'Alexandrie*. Editions Scientifiques de Pologne, Varsovie.
- Salsano, A. 2015. 'Stone architectural Elements of Manqabad. Season 2014', in: *Aegyptus* 1, pp. 91–111.
- Sauneron S., Jacquet J. 1972. *Les ermitages chrétiens du désert d'Esna. Vol.I. Archeologie et Inscriptions*, Le Caire, IFAO.
- Schiffer M.B. 2010. *Behavioral Archaeology. Principles and Practice*. Routledge.
- Schiffer M.B, Skibo J.M. 2008. *People and Things. A behavioral approach to Material Culture*, Springer.
- Schrunk, I., D. 2003. 'Spiritual Economy and Spiritual Craft: Monastic pottery Production and Trade', in: Sellev P.H., Stewart C., Bolman E.S., Elmer L. (eds.) *Living for Eternity: The White Monastery and its Neighborhood. Proceedings of a Symposium at the University of Minnesota, Minneapolis March 6-9*, pp. 83–96.
- Spencer, A. J., Bailey, D. M., Davies, W. V. 1982. *British Museum Expedition to Middle Egypt: Ashmunein :(1980)*, London, British Museum.
- Stafford G., 2019, 'Evidence for Female Pilgrims at Abu Mina', in: *Transmitting and Circulating the Late Antique and Byzantine Worlds* edited by Ivanova M., Jeffery H., Leiden, Brill, pp. 11-43.
- Swift, E. 2007. 'Decorated Vessels: the Function of Decoration in Late Antiquity', in: Lavan L., Swift E., and Putzey T. (eds) *Objects in Context: Objects in Use, Material Spatiality in Late Antiquity*, Leiden and Boston, pp. 385–409.
- Török, L. 2005. *Transfigurations of Hellenism. Aspects of late antique art in Egypt AD 250-700*, Brill Publisher Leiden.
- Török, L. 2012. *After the Pharaohs. Treasures of Coptic Art from Egyptian Collections* (exhibition catalogue), Budapest, Museum of Fine Arts Budapest.

University of Southampton. 2014. *Roman Amphorae: a digital resource* [data-set]. York: Archaeology Data Service [distributor] (doi:10.5284/1028192).

Waliszewski T., Juchniewicz K., Gwiazda M. 2012. 'Preliminary report on the 2008 and 2009 excavation seasons at Jiyeh (Porphyreon) With appendices: 1. Sunken vessels in late Roman and Byzantine Houses in area D 2. Preliminary remarks on thresholds from private houses in Jiyeh (Porphyreon)', in: *Polish Archaeology in the Mediterranean* (PAM) 21, pp. 423-445.

Wielgosz-Rondolino D., Gwiazda M. 2016. 'Marea Season 2014: Excavation in House H1', in: *Polish Archaeology in the Mediterranean* (PAM) 25, pp. 115, 126.

Winlock H.E., Crum W.E. 1926. *The Monastery of Epiphanius at Thebes*. Part I. New York.

Wodzinska A. 2010. *A Manual of Egyptian Pottery. Volume 4: Ptolemaic Period - Modern*, AERA Field Manuals 1, Boston.

Xanthopoulou, M. 2010. 'Martyrs, Monks, and Musicians. Two enigmatic Coptic Vases in the Benaki Museum and their Parallels', in: *ΜΟΥΣΕΙΟ ΜΗΕΝΑΚΗ* 10, pp. 19-51.

List of Plates

- I - Investigation at the Manqabad furnace.
- II - Cleaning of the mudbrick wall at the entrance of the furnace.
- III - Plan and section of an amphorae kiln at Ain Scersciara, Libya.
- IV - Pottery furnace at Bakchias.
- V - Roman kiln for pottery at Monteabate (Italy).
- VI - Pottery kiln at Kom Dahab (Naukratis).
- VII - Glass items collected during the surveys of the Central and Southern Sectors.
- VIII - Evidence of glass production from the Southern Sector.
- IX - LRA7/AE7 amphora from the Northern Sector.
- X - Selection of pottery fragments from the Northern Sector.
- XI - Niche of the Northern Sector where a large sunken jar was found full of painted fragments.
- XII - General view of the Manqabad pottery stored at the warehouse of el-Ashmunein.



Plate I – Investigation at the Manqabad furnace.



Plate II – Cleaning of the mudbrick wall at the entrance of the furnace.

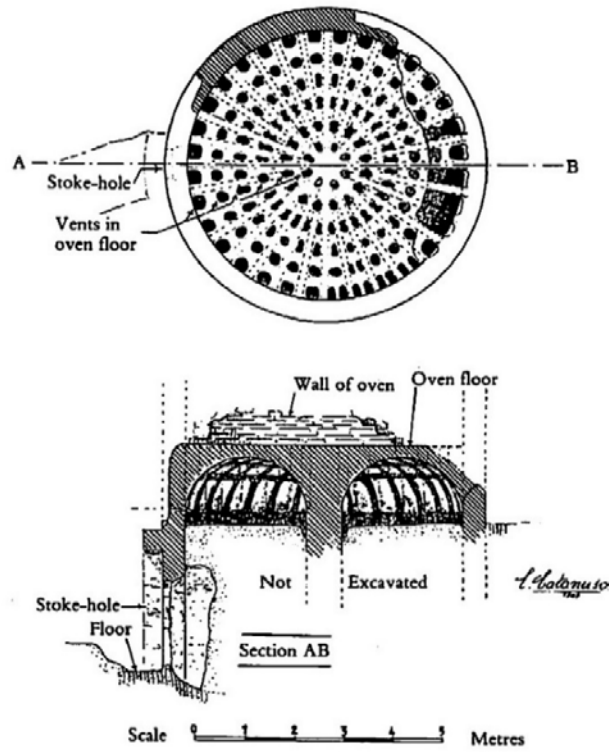


Plate III – Plan and section of an amphorae kiln at Ain Scersciara, Libya.



Plate IV – Pottery furnace at Bakchias.



Plate V – Roman kiln for pottery at Monteabate (Italy).



Plate VI – Pottery kiln at Kom Dahab (Naukratis).

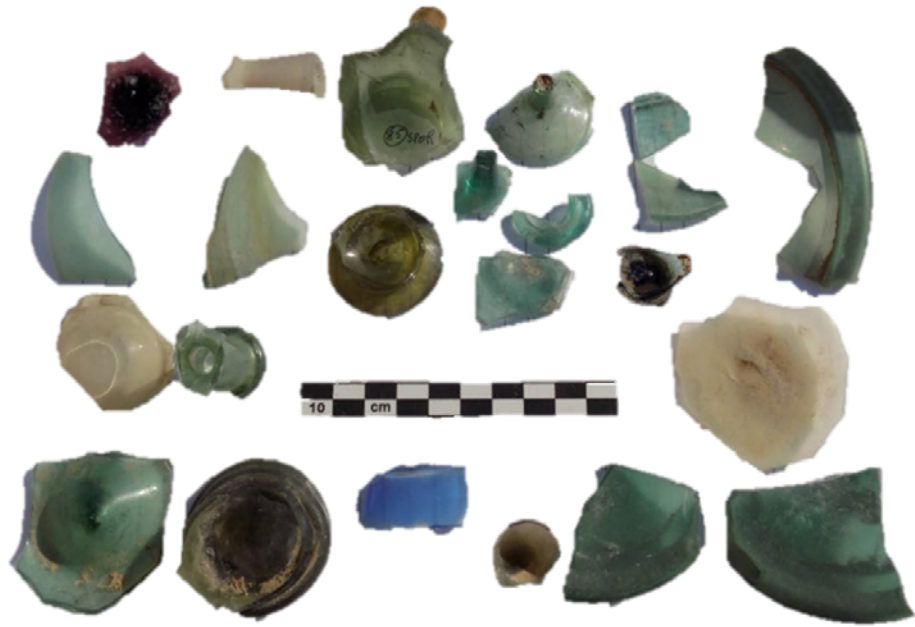


Plate VII – Glass items collected during the surveys of the Central and Southern Sectors.



Plate VIII – Evidence of glass production from the Southern Sector.



Plate IX - LRA7/AE7 amphora from the Northern Sector.



Plate X - Selection of pottery fragments from the Northern Sector.



Plate XI – Niche of the Northern Sector where a large sunken jar was found full of painted fragments (see below).





Plate XII – General view of the Manqabad pottery stored at the warehouse of el-Ashmunein.

